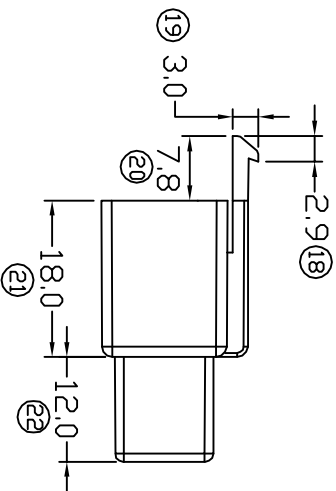
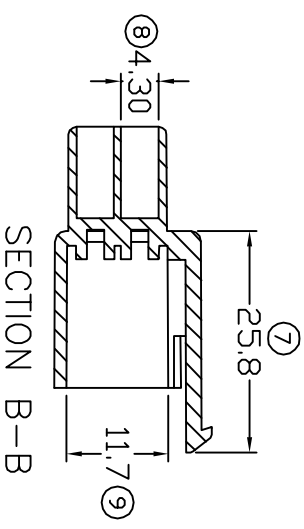
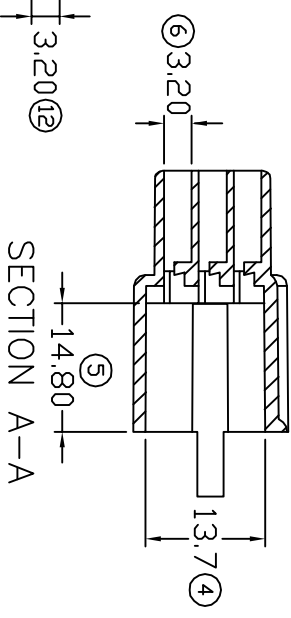
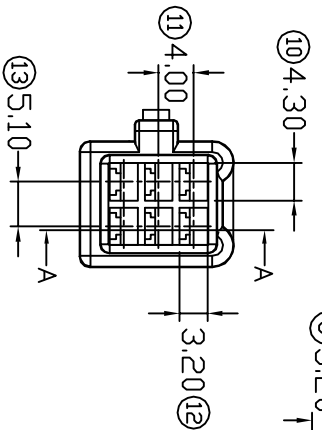
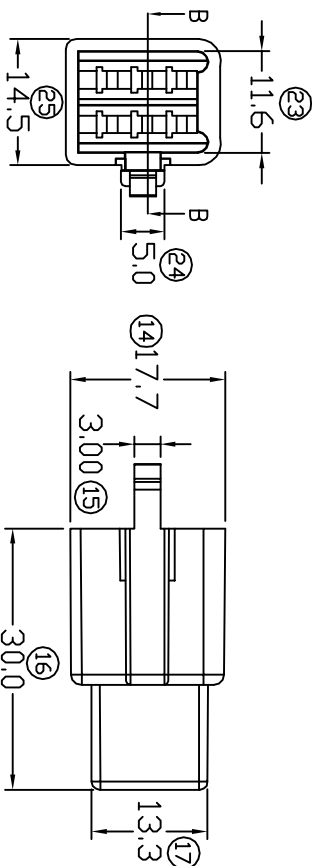
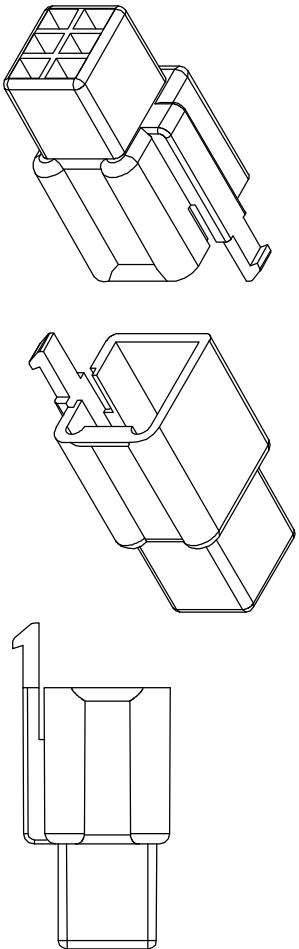


HOUSING SPECIFICATION DRAWING

UNCONTROLLED COPY



- 3) TERMINALS-LOCK TYPE.
- 2) 6-WAY MALE HOUSING.
- 1) PACKING QTY: 200 PCS/BAG.

SPECIFICATION :

FOR REFERENCE ONLY

NO	REVISION DATE	REASON OF CHANGE	REVISION:
00	31/10/07	1ST ISSUE	02
01	30/11/07	SPEC 25.4 CHANGE TO 25.8	
02	31/1/08	SPEC 11.7 CHANGE TO 11.6, 7.4 CHANGE TO 7.8.	

DIMENSIONS : MM	TOLERANCE UNLESS OTHERWISE SPECIFIED:
DWN: KS YEW	X.XXX +/-0.05
CHK: CH ANG	X.XX +/-0.10
APVD: CHUANG	X.X +/-0.20
SCALE : FREE	X +/-0.50
DRAWING NO: A1502	EFFECTIVE DATE : 31/1/08

COLOR	MATERIAL	PART NUMBER
NATURAL	NYLON PA66(V2)	110M6L
BLACK	NYLON PA66(V2)	110M6L-BK
BROWN	NYLON PA66(V2)	110M6L-BR
GREEN	NYLON PA66(V2)	110M6L-GN
RED	NYLON PA66(V2)	110M6L-RD

EPI Terminals & Connectors
 Elamp Precision Industry(M) Sdn.Bhd.

PART NAME:

110 SERIES HOUSINGS WITH LOCK
 APPLICABLE (1) TERMINALS (2) HOUSING

(1) 27110
 (2) 110F6LA,110F6L