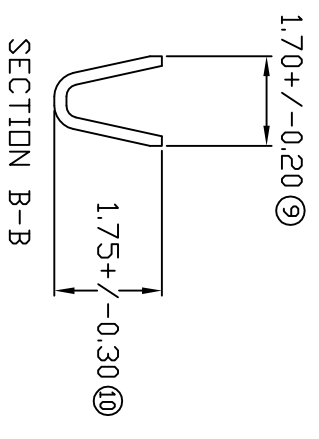
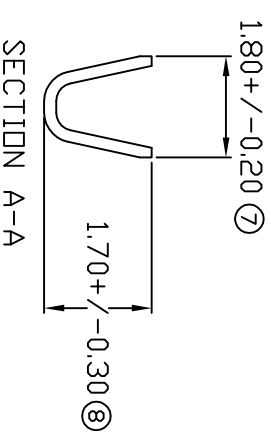
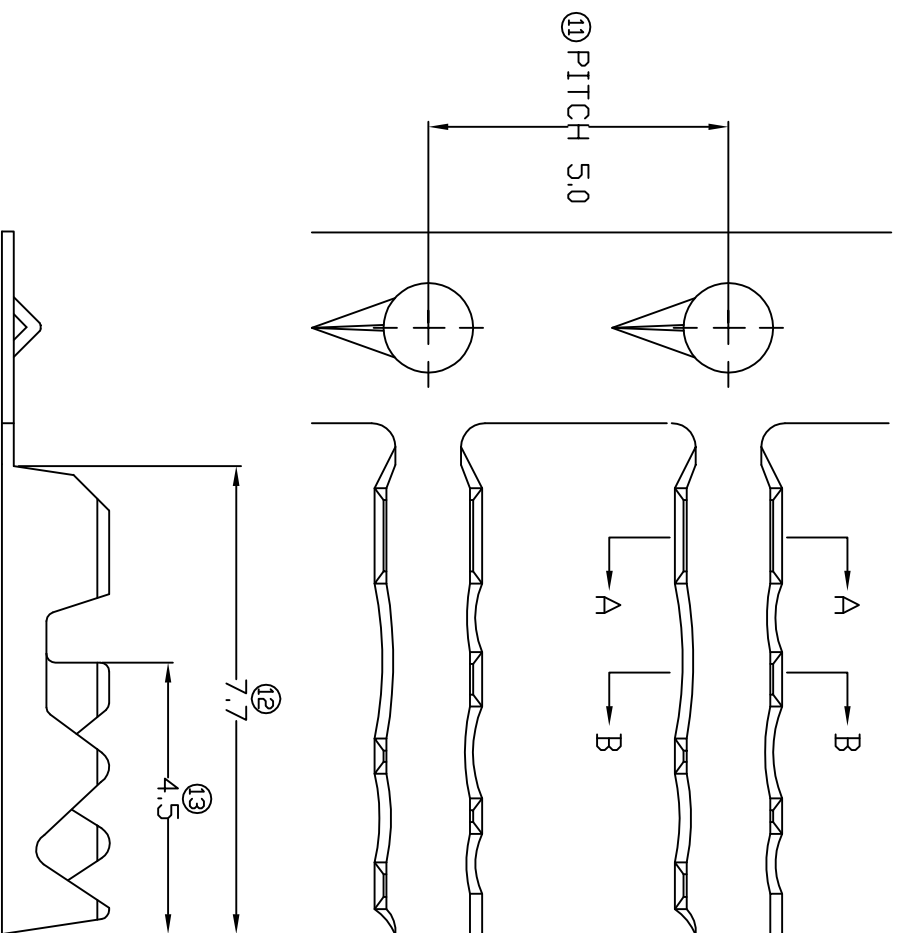


# TERMINALS SPECIFICATION DRAWING



FOR REFERENCE ONLY

- 6) CRIMPING WIRE TENSILE FORCE IS BASE ON COPPER BREAK OFF INTENSITY,
- 5) TEMPERATURE RANGE -40°C TO +120°C.
- 4) VOLTAGE-MAX [VOLTS] PER WIRE SPECIFICATION.
- 3) PACKING QTY : 20000 PCS/REEL.
- 2) WIRE INSULATION (D.D) : 0.95MM.
- 1) APPLICABLE WIRE RANGE : #AWG 26/1061MM<sup>2</sup>.

SPECIFICATION :

MATERIAL: TO.20 BRASS C2680		NONE 12119A-1	
DIMENSIONS : MM TOLERANCE UNLESS OTHERWISE SPECIFIED: X.XXX +/-0.05 X.XX +/-0.10 X.X +/-0.20 X +/-0.50		TREATMENT SELECTIVE PART NUMBER	
DWN: KS YE'W CHK: SC CHOO APVD: CHUANG Y.L		EPI Terminals & Connectors Elamp Precision Industry(M) Sdn.Bhd.	
EFFECTIVE DATE : 11/7/07		SCALE : FREE DRAWING NO: A1419	
REVISION: 02		PART NAME: SPLICE TERMINALS	
SHEET OF : 1 / 1		APPLICABLE (1) TERMINALS (2) HOUSING (1) - (2) -	