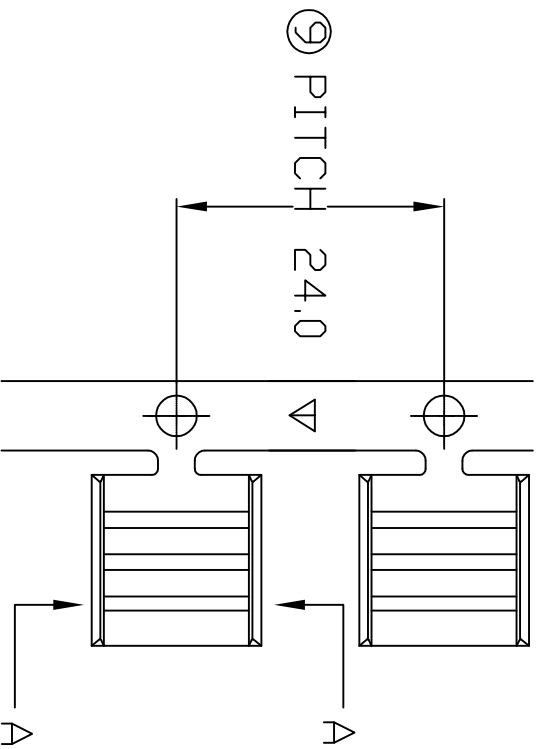
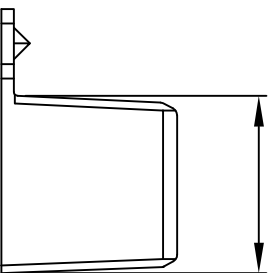


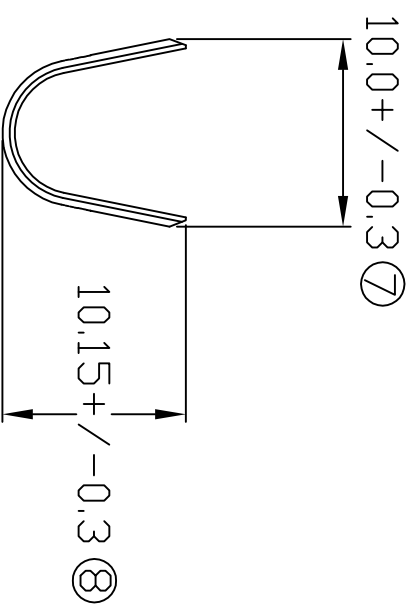
TERMINALS SPECIFICATION DRAWING



9.45 ± 0.2 ⑩



FOR REFERENCE ONLY



SECTION A-A

- 6) CRIMPING WIRE TENSILE FORCE IS BASE ON COPPER BREAK OFF INTENSITY.
- 5) TEMPERATURE RANGE -40°C TD +120°C.
- 4) VOLTAGE-MAX (VOLTS) PER WIRE SPECIFICATION.
- 3) PACKING QTY : 1000 PCS/REEL.
- 2) WIRE INSULATION (O.D) : - MM.
- 1) APPLICABLE WIRE RANGE : 13.04-6.65MM².

SPECIFICATION :

MATERIAL: TO.80 BRASS C2680		NONE 12150-1	
DIMENSIONS : MM		TREATMENT SELECTIVE PART NUMBER	
TOLERANCE UNLESS OTHERWISE SPECIFIED: X.XXX +/-0.05 X.XX +/-0.10 X.X +/-0.20 X +/-0.50		DWN: KS YE W CHK: SC CHOO APVD: CHUANG SCALE : FREE DRAWING NO:	
EFFECTIVE DATE : 11/7/07		A1315	
REVISION: 02		PART NAME: SPLICE TERMINALS APPLICABLE (1) TERMINALS (2) HOUSING	
SHEET OF : 1 / 1		(1) - (2) -	