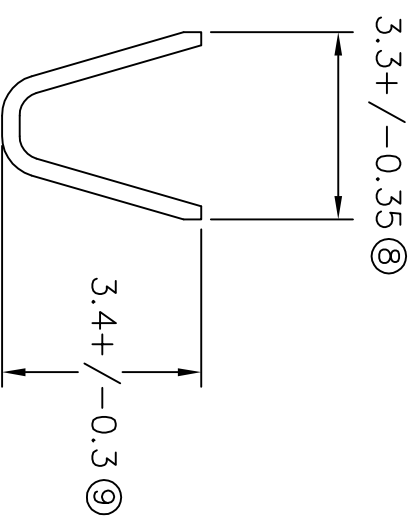
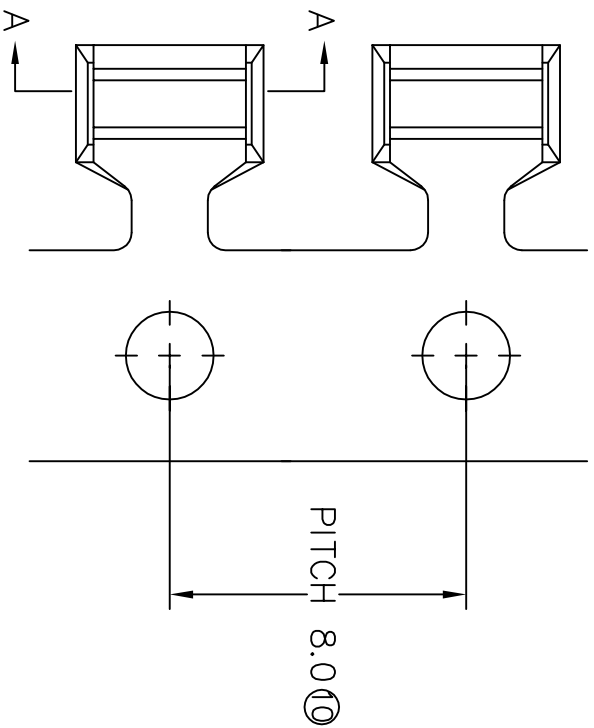
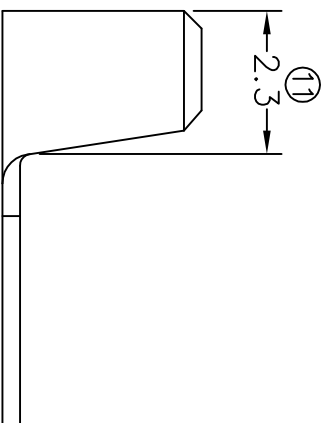


TERMINALS SPECIFICATION DRAWING




SECTION A-A



FOR REFERENCE ONLY

- 7) CRIMPING WIRE TENSILE FORCE IS BASE ON COPPER BREAK OFF INTENSITY.
- 6) TEMPERATURE RANGE -40°C TD +120°C.
- 5) VOLTAGE-MAX [V(DLTS)] PER WIRE SPECIFICATION.
- 4) THICKNESS PLATING MORE THAN 40 μ INCH.
- 3) PACKING QTY : 20000 PCS/REEL.
- 2) WIRE INSULATION (O.D) : - MM.
- 1) APPLICABLE WIRE RANGE : 1.02-0.45MM².

SPECIFICATION :

MATERIAL: 10.30 BRASS C2680	TIN PLATING		
DIMENSIONS : MM	DWN: KS YEW	EPJ Terminals & Connectors Elamp Precision Industry(M) Sdn.Bhd.	1219BS-2
TOLERANCE UNLESS OTHERWISE SPECIFIED: X.XXX +/-0.05 X.XX +/-0.10 X.X +/-0.20 X +/-0.50	CHK: SC CHOO		1219BS-1
	APVD: CHUANG	TREATMENT SELECTIVE	PART NUMBER
REVISION: 02	SCALE : FREE	PART NAME: SPLICE TERMINALS	
	DRAWING NO: A1346	APPLICABLE (1) TERMINALS (2) HOUSING	
SHEET OF : 1 / 1	EFFECTIVE DATE : 19/7/07	(1) - (2) -	