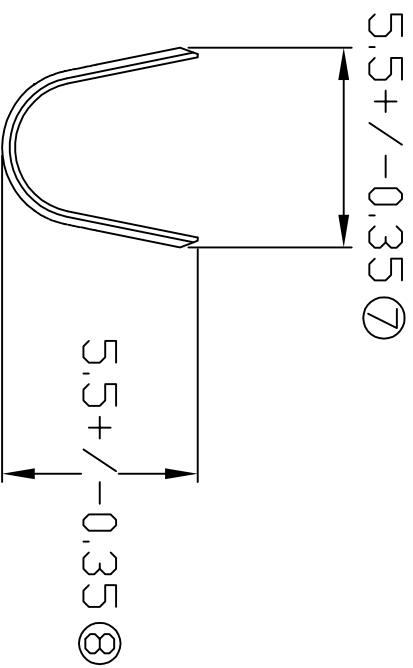
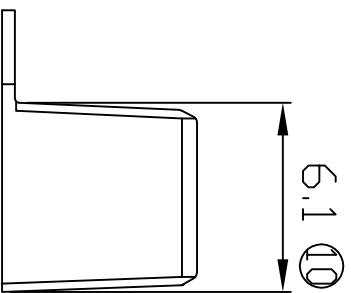
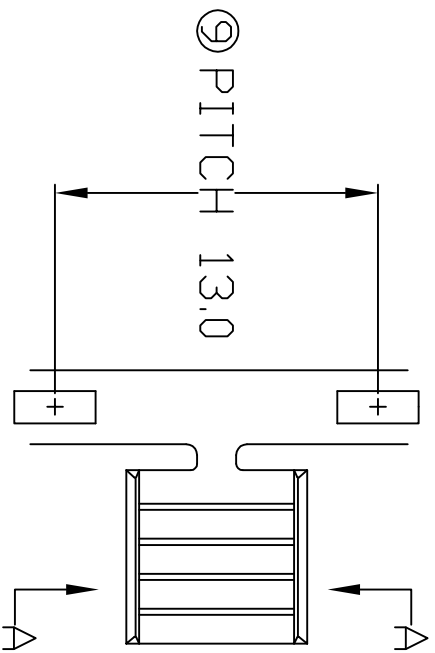


# TERMINALS SPECIFICATION DRAWING



FOR REFERENCE ONLY

- 6) CRIMPING WIRE TENSILE FORCE IS BASE ON COPPER BREAK OFF INTENSITY,
- 5) TEMPERATURE RANGE -40°C TO +120°C.
- 4) VOLTAGE-MAX (VOLTS) PER WIRE SPECIFICATION.
- 3) PACKING QTY : 7000 PCS/REEL.
- 2) WIRE INSULATION (D.D) : - MM.
- 1) APPLICABLE WIRE RANGE : 3.74-1.91MM<sup>2</sup>.

SPECIFICATION :

MATERIAL: TO.50 BRASS C2680		NONE 12200-1 PART NUMBER	
DIMENSIONS : MM		DWN: KS YE W	
TOLERANCE UNLESS OTHERWISE SPECIFIED: X.XXX +/-0.05 X.XX +/-0.10 X.X +/-0.20 X +/-0.50		CHK: SC CHOO Y.L APVD: CHUANG	
REVISION: 04		SCALE : FREE DRAWING NO:	
SHEET OF : 1 / 1		EFFECTIVE DATE : 11/7/07	
APPLICABLE (1) TERMINALS (2) HOUSING		PART NAME: SPLICE TERMINALS	
(1) - (2) -		EPI Terminals & Connectors Elamp Precision Industry(M) Sdn.Bhd.	