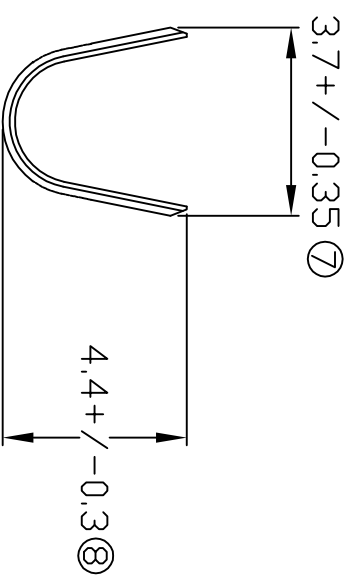
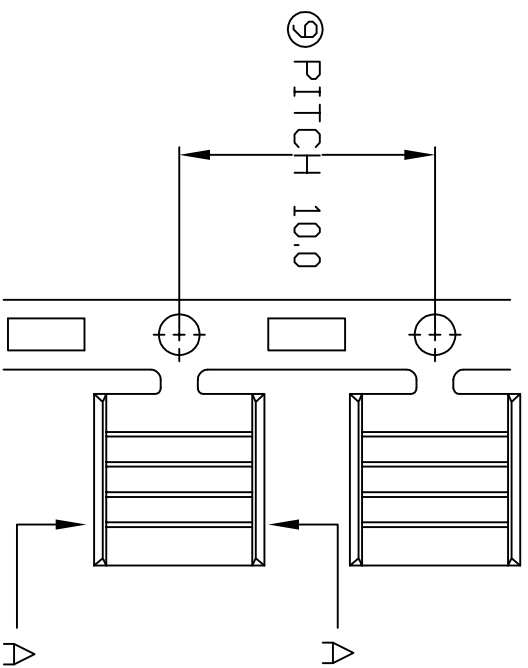
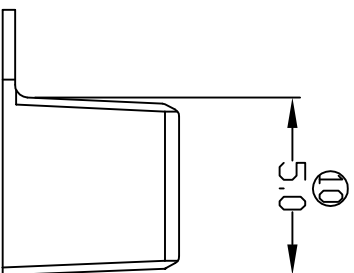


TERMINALS SPECIFICATION DRAWING



SECTION A-A



FOR REFERENCE ONLY

- 6) CRIMPING WIRE TENSILE FORCE IS BASE ON COPPER BREAK OFF INTENSITY.
- 5) TEMPERATURE RANGE -40°C TO +120°C.
- 4) VOLTAGE-MAX [VOLTS] PER WIRE SPECIFICATION.
- 3) PACKING QTY : 13000 PCS/REEL.
- 2) WIRE INSULATION (D.D) : - MM.
- 1) APPLICABLE WIRE RANGE : 2.10-1.07MM².

SPECIFICATION :

MATERIAL: 10.40 BRASS C2680		REVISION: 05	
TOLERANCE UNLESS OTHERWISE SPECIFIED: X.XXX +/-0.05 X.XX +/-0.10 X.X +/-0.20 X +/-0.50			
DIMENSIONS : MM		SHEET OF : 1 / 1	
DWN: KS YE W		EFFECTIVE DATE : 11/7/07	
TREATMENT SELECTIVE		SCALE : FREE DRAWING NO: A1335	
PART NUMBER 12800-1		APPLICABLE (1) TERMINALS (2) HOUSING (1) - (2) -	
EPI Terminals & Connectors Elamp Precision Industry(M) Sdn.Bhd.			