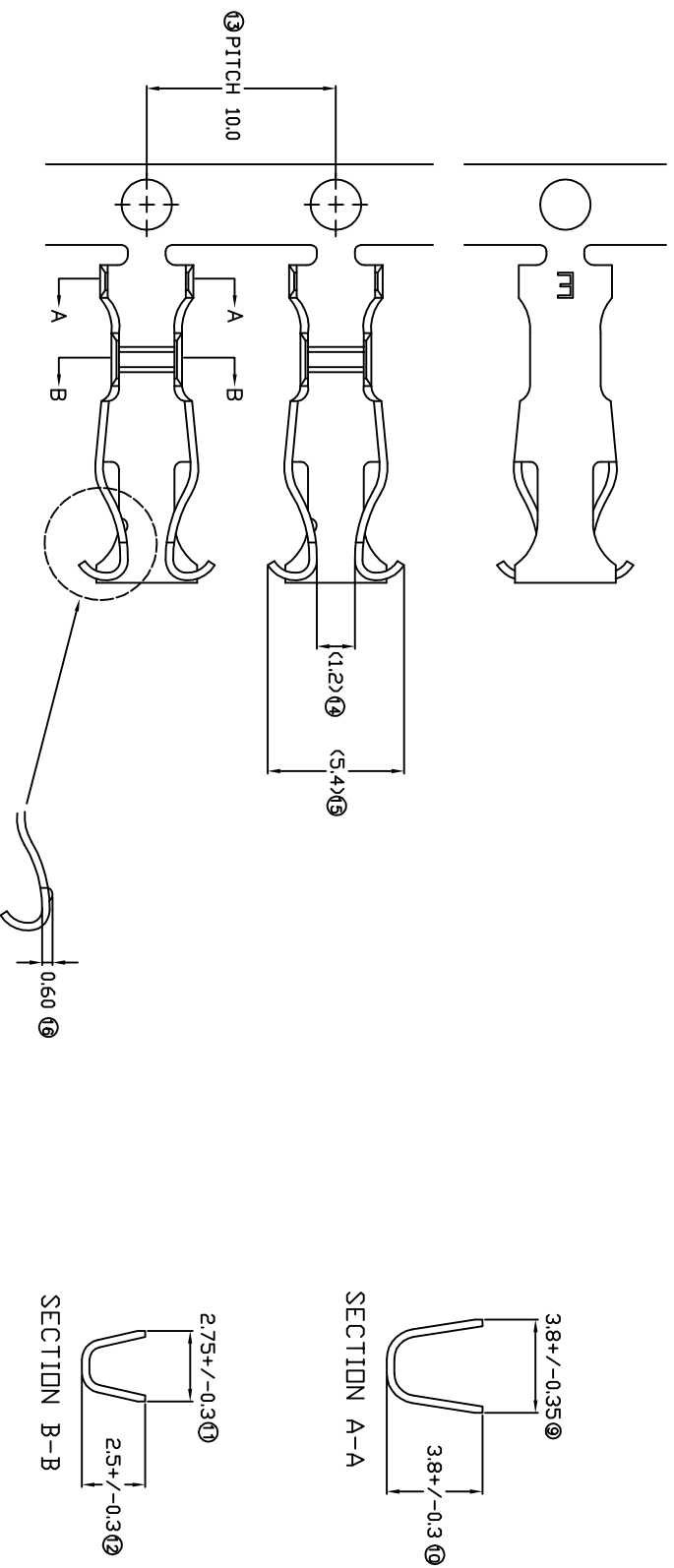


TERMINALS SPECIFICATION DRAWING



FOR REFERENCE ONLY

- 8) 14, 15 FOR REFERENCE ONLY
- 7) CRIMPING WIRE TENSILE FORCE IS BASE ON COPPER BREAK OFF INTENSITY.
- 6) TEMPERATURE RANGE -40°C TD +120°C.
- 5) VOLTAGE-MAX (VOLTS) PER WIRE SPECIFICATION.
- 4) THICKNESS PLATING MORE THAN 40μ INCH.
- 3) PACKING QTY : 5000 PCS/REEL.
- 2) WIRE INSULATION (O.D) : 2.3MM.
- 1) APPLICABLE WIRE RANGE : 0.58-0.26MM²

SPECIFICATION :

MATERIAL: TO.30 PHOSPHOR BRONZE C5191	PRE-TIN PLATED	13502-2T
DIMENSIONS : MM	TREATMENT SELECTIVE	PART NUMBER
TOLERANCE UNLESS OTHERWISE SPECIFIED:	DWN: KS YE W	13502-1
X.XXX +/-0.05	CHK: SC CHOO	
X:XX +/-0.10	APVD: CHUANG	
X.X +/-0.20	SCALE : FREE	
X +/-0.50	DRAWING NO:	
EFFECTIVE DATE : 24/5/07	A1242(1)	
REVISION: 02	PART NAME: LAMP SEAT TERMINALS	
SHEET OF : 1 / 1	APPLICABLE (1) TERMINALS (2) HOUSING	
	TERMINALS & Connectors	
	EIamp Precision Industry(M) Sdn.Bhd.	