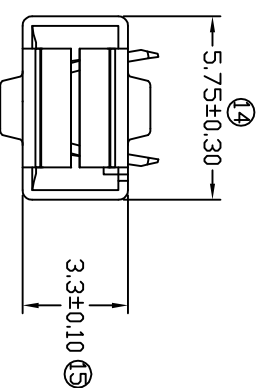
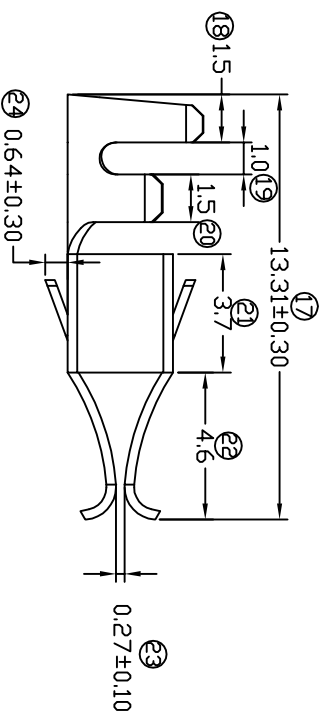
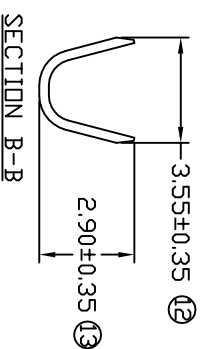
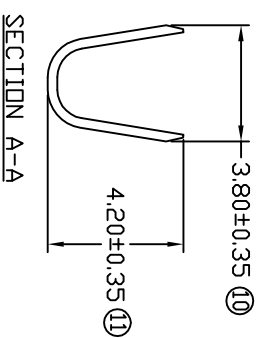
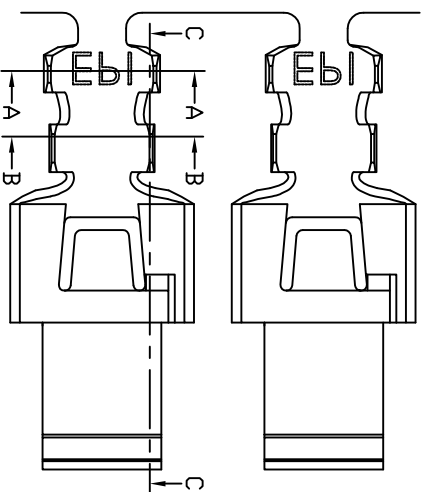
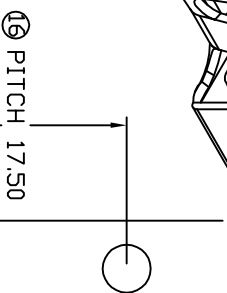
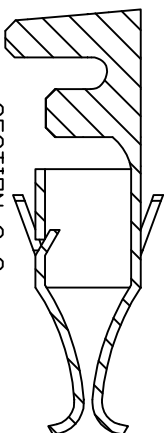
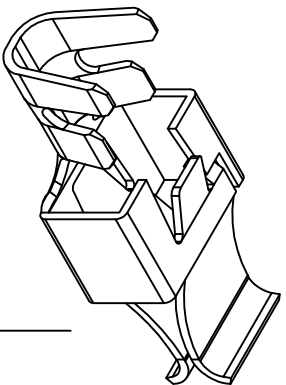


# TERMINALS SPECIFICATION DRAWING



FOR REFERENCE ONLY

- 9) CRIMPING WIRE TENSILE FORCE IS BASE ON COPPER BREAK OFF INTENSITY.
- 8) TEMPERATURE RANGE -40°C TD +120°C.
- 7) VOL TAGE-MAX [VOLT(S)] PER WIRE SPECIFICATION.
- 6) TENSILE FORCE : MIN 0.18KG.
- 5) INSERT FORCE , MAX 0.35KG.
- 4) THICKNESS PLATING MORE THAN 40µ INCH.
- 3) PACKING QTY : 2500PCS/REEL.
- 2) WIRE INSULATION (Q.D) : 2.4MM.
- 1) APPLICABLE WIRE RANGE : 0.77~0.34MM<sup>2</sup>.

SPECIFICATION :

MATERIAL: TO.30 PHOSPHOR BRONZE C5191		PRE-TIN PLATED TREATMENT SELECTIVE			13901-2T PART NUMBER
DIMENSIONS : MM		DWN: KS YEY			
TOLERANCE UNLESS OTHERWISE SPECIFIED: X.XXX +/-0.05 X.XX +/-0.10 X.X +/-0.20 X +/-0.50		CHK: SC CHOO APVD: CHUANG Y.L		PART NAME: PCB COVER FEMALE CONNECTOR	
SHEET OF : 1 / 1		EFFECTIVE DATE : 18/7/07		DRAWING NO: A1482	
		APPLICABLE (1) TERMINALS (2) HOUSING		(1) - (2) -	

EPI

Terminals & Connectors  
 Elamp Precision Industry(M) Sdn.Bhd.