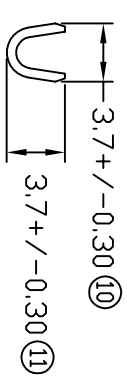
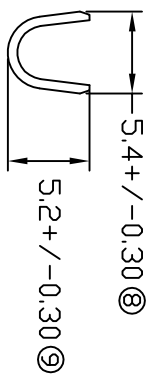
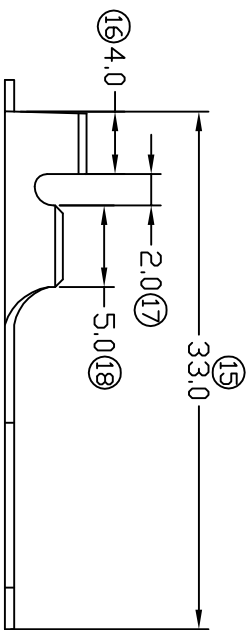
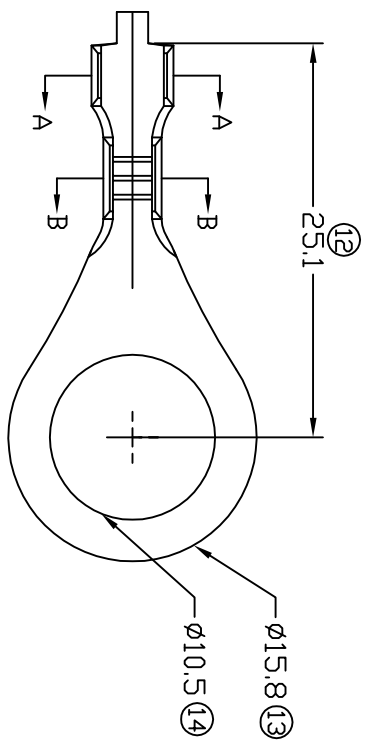
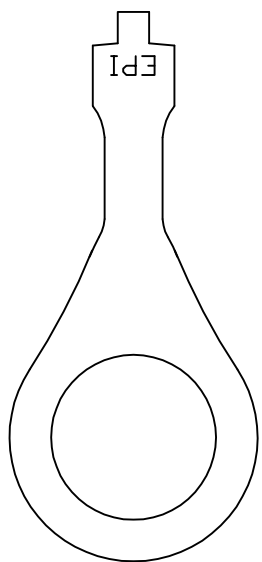


TERMINALS SPECIFICATION DRAWING



FOR REFERENCE ONLY

- 7) CRIMPING WIRE TENSILE FORCE IS BASE ON COPPER BREAK OFF INTENSITY.
- 6) TEMPERATURE RANGE -40°C TO +120°C.
- 5) VOLTAGE-MAX (VOLTS) PER WIRE SPECIFICATION.
- 4) THICKNESS PLATING MORE THAN 40µ INCH.
- 3) PACKING QTY : - PCS/REEL.
- 2) WIRE INSULATION (OD) : 3.0MM.
- 1) APPLICABLE WIRE RANGE : 1.46-0.75 MM² .

SPECIFICATION :

MATERIAL: t0.60 BRASS	PRE-TIN PLATED		
C2680	NONE	1401610-2T	
DIMENSIONS : MM	TREATMENT SELECTIVE	PART NUMBER	
DWN: KS YE W			
TOLERANCE UNLESS OTHERWISE SPECIFIED:			
X.XXX +/-0.05	CHK: SC CHOO	EPI Terminals & Connectors	
X.XX +/-0.10	APVD: YL CHUANG	Elamp Precision Industry(M) Sdn.Bhd.	
X.X +/-0.20	SCALE : FREE	PART NAME:	
X +/-0.50	DRAWING NO: A1489	RING TONGUE TERMINALS	
EFFECTIVE DATE : 13/6/07		APPLICABLE (1) TERMINALS (2) HOUSING	
SHEET OF : 1 / 1		(1) -	
		(2) -	