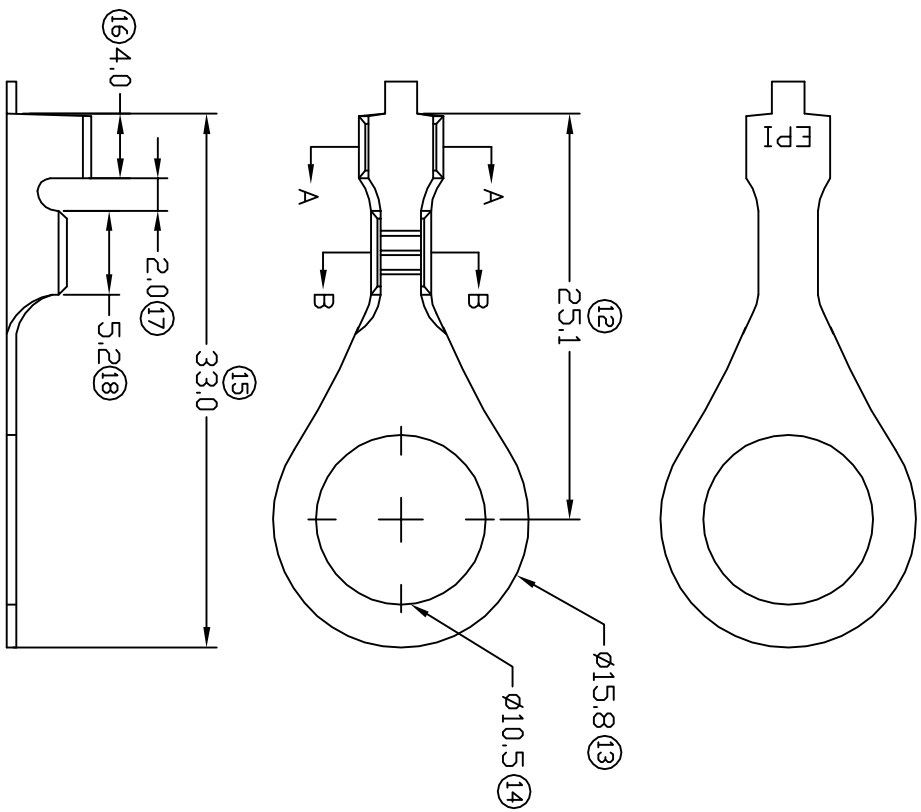


# TERMINALS SPECIFICATION DRAWING

UNCONTROLLED COPY



- 7) CRIMPING WIRE TENSILE FORCE IS BASE ON COPPER BREAK OFF INTENSITY.
- 6) TEMPERATURE RANGE -40°C TO +120°C.
- 5) VOLTAGE-MAX [VOLTS] PER WIRE SPECIFICATION.
- 4) THICKNESS PLATING MORE THAN 40µ INCH.
- 3) PACKING QTY : 2000 PCS/REEL.
- 2) WIRE INSULATION (O.D) : 2.8MM.
- 1) APPLICABLE WIRE RANGE : 1.37-0.70MM<sup>2</sup>.

SPECIFICATION :

FOR REFERENCE ONLY

REV.	DATE	1ST ISSUE	AMENDMENT	SHEET OF :	1 / 1
00	29/4/09				

MATERIAL: to.50 BRASS C2680	PRE-TIN PLATED NONE TREATMENT SELECTIVE	1401610A-2T 1401610A-1 PART NUMBER
DIMENSIONS : MM TOLERANCE UNLESS OTHERWISE SPECIFIED: X.XXX +/-0.05 X.XX +/-0.10 X.X +/-0.20 X +/-0.50	DWN: KS YEW CHK: C <sub>Y</sub> APVD: Y <sub>L</sub> CHUANG	EPI Terminals & Connectors Elamp Precision Industry(M) Sdn.Bhd.
EFFECTIVE DATE : 29/4/09	SCALE : FREE DRAWING NO: A1539	PART NAME: RING TONGUE TERMINALS APPLICABLE (1) TERMINALS (2) HOUSING