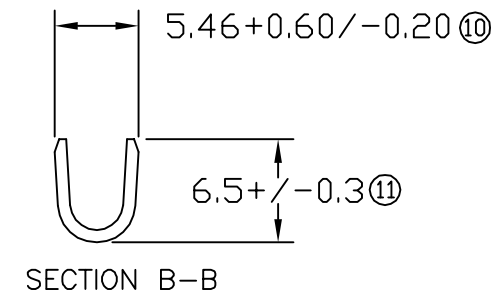
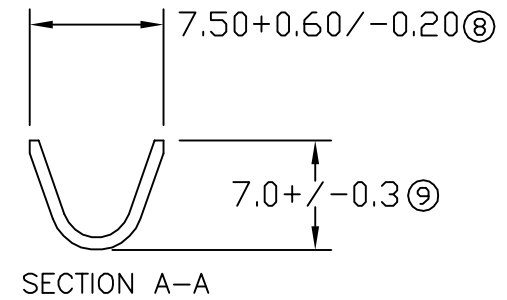
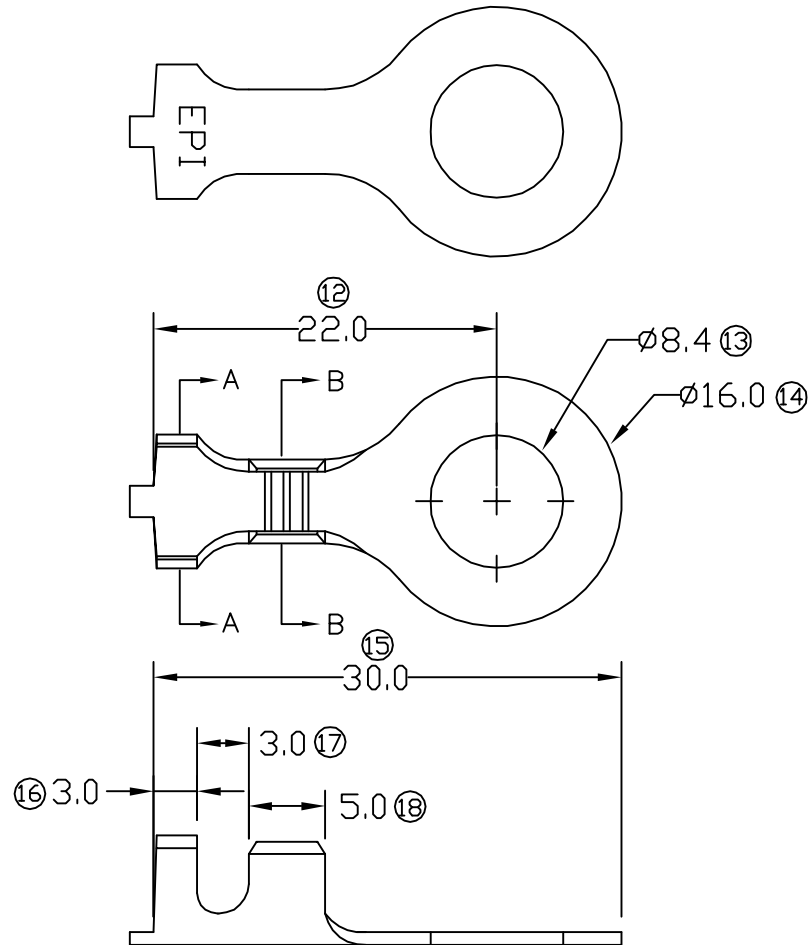


TERMINALS SPECIFICATION DRAWING



- 7) CRIMPING WIRE TENSILE FORCE IS BASE ON COPPER BREAK OFF INTENSITY.
- 6) TEMPERATURE RANGE -40°C TO +120°C.
- 5) VOLTAGE-MAX [VOLTS] PER WIRE SPECIFICATION
- 4) THICKNESS PLATING MORE THAN 40μ INCH.
- 3) PACKING QTY : 1500 PCS/REEL.
- 2) WIRE INSULATION (O.D) : 3.9MM.
- 1) APPLICABLE WIRE RANGE : 4.52-2.31MM².

SPECIFICATION :

FOR REFERENCE ONLY

MATERIAL: t0.80 BRASS C2680	PRE-TIN PLATED	140208-2T
	NONE	140208-1
	TREATMENT SELECTIVE	PART NUMBER
DIMENSIONS : MM TOLERANCE UNLESS OTHERWISE SPECIFIED: X.XXX +/-0.05 X.XX +/-0.10 X.X +/-0.20 X +/-0.50	DWN: KS YEW CHK: C.Y CHUANG APVD: Y.L CHUANG SCALE : FREE DRAWING NO: A1491	EPI Terminals & Connectors Elamp Precision Industry(M) Sdn.Bhd. PART NAME: RING TONGUE TERMINALS APPLICABLE (1) TERMINALS (2) HOUSING (1) - (2) -
REVISION: 01 SHEET OF : 1 / 1	EFFECTIVE DATE : 25/6/09	
01 25/6/09 ADD IN PACKING QTY REV. DATE AMENDMENT		