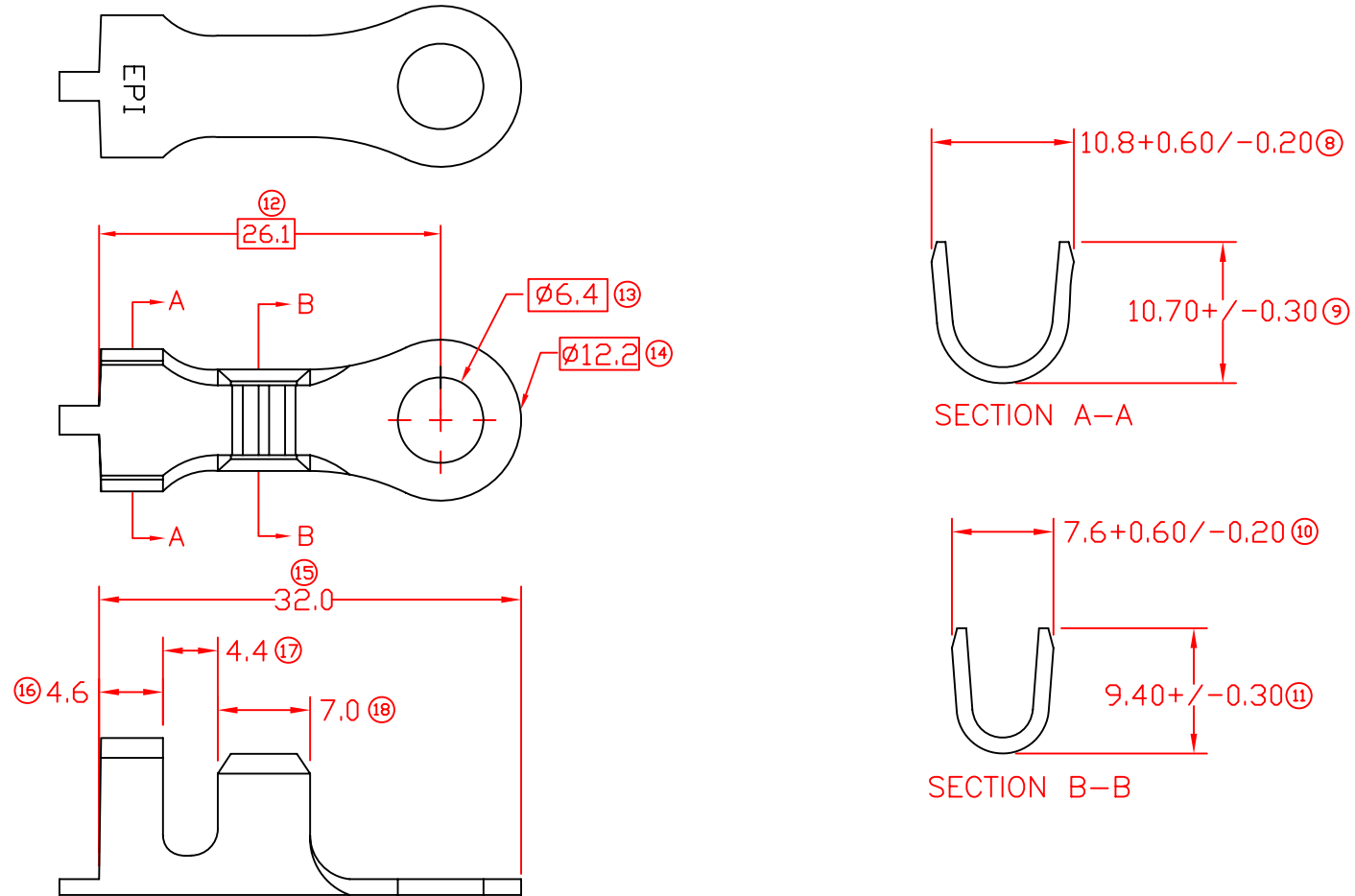


TERMINALS SPECIFICATION DRAWING

UNCONTROLLED COPY



☐ MATCHING DIMENSION

- 7) CRIMPING WIRE TENSILE FORCE IS BASE ON COPPER BREAK OFF INTENSITY.
- 6) TEMPERATURE RANGE -40°C TO +120°C.
- 5) VOLTAGE-MAX [VOLTS] PER WIRE SPECIFICATION.
- 4) THICKNESS PLATING MORE THAN 40μ INCH.
- 3) PACKING QTY : 1000 PCS/REEL.
- 2) WIRE INSULATION (O.D) : 6.0MM.
- 1) APPLICABLE WIRE RANGE : 8.99-4.59MM².

FOR REFERENCE ONLY

MATERIAL: t1.20 BRASS C2680	PRE-TIN PLATED	140406-2T
	NONE	140406-1
	TREATMENT SELECTIVE	PART NUMBER
DIMENSIONS : MM TOLERANCE UNLESS OTHERWISE SPECIFIED: X.XXX +/-0.05 X.XX +/-0.10 X.X +/-0.20 X +/-0.50	PREPARE BY: KS YEW REVIEWED BY: CH ANG APPROVED BY: CY CHUANG SCALE : FREE DRAWING NO: A1495	<div style="text-align: center;"> Terminals & Connectors Elamp Precision Industry(M) Sdn.Bhd. </div> PART NAME: RING TONGUE TERMINALS APPLICABLE (1) TERMINALS (2) HOUSING (1) - (2) -
REVISION: 01 	EFFECTIVE DATE : 3/1/11	
SHEET OF : 1 / 1		

SPECIFICATION :

01	3/1/11	ADD PACKING QTY ONLY	REVISION: 01
REV.	DATE	AMENDMENT	SHEET OF : 1 / 1