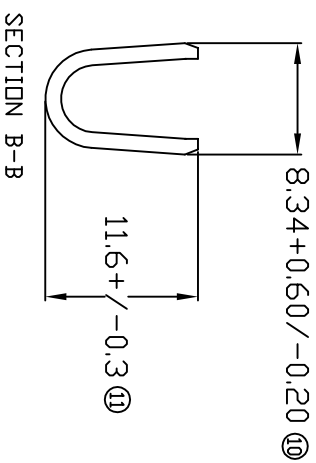
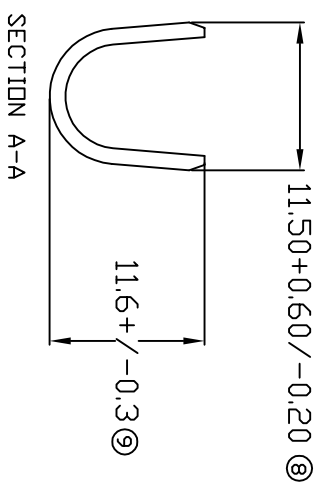
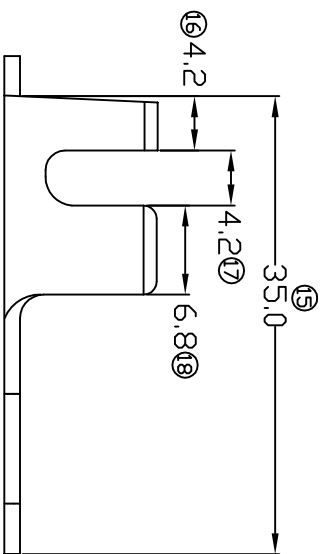
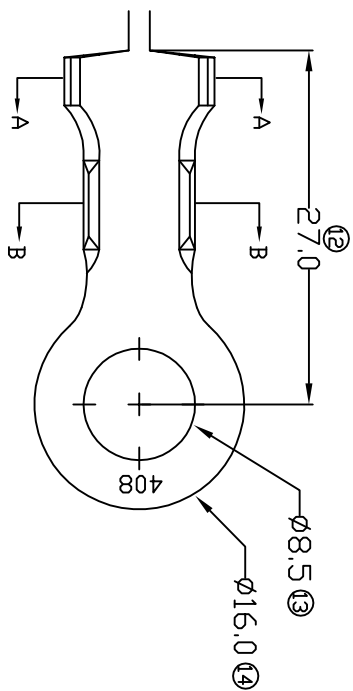
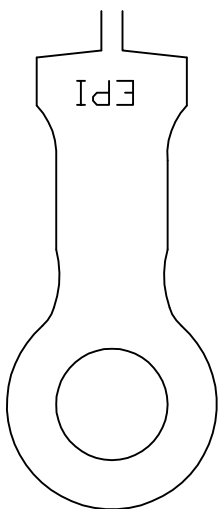


# TERMINALS SPECIFICATION DRAWING



FOR REFERENCE ONLY

- 7) CRIMPING WIRE TENSILE FORCE IS BASE ON COPPER BREAK OFF INTENSITY.
- 6) TEMPERATURE RANGE -40°C TO +120°C.
- 5) VOLTAGE-MAX (VOLTS) PER WIRE SPECIFICATION.
- 4) THICKNESS PLATING MORE THAN 40µ INCH.
- 3) PACKING QTY : - PCS/REEL.
- 2) WIRE INSULATION (OD) : 6.4MM.
- 1) APPLICABLE WIRE RANGE : 13.82-7.05MM<sup>2</sup>.

SPECIFICATION :

	REVISION: 00		EFFECTIVE DATE : 29/6/07		SHEET OF : 1 / 1
MATERIAL: t1.2 BRASS C2680		PRE-TIN PLATED		140408-2T	
DIMENSIONS : MM		TREATMENT SELECTIVE		140408-1	
TOLERANCE UNLESS OTHERWISE SPECIFIED:		DWN: KS YE'W		PART NUMBER	
X.XXX +/-0.05		CHK: SC CHOO		<b>EPI</b> Terminals & Connectors Elamp Precision Industry(M) Sdn.Bhd.	
X.XX +/-0.10		APVD: CHUANG			
X.X +/-0.20		SCALE : FREE			
X +/-0.50		DRAWING NO: A1490			
		PART NAME:		PART NUMBER	
		RING TONGUE TERMINALS		140408-1	
		APPLICABLE (1) TERMINALS (2) HOUSING			
		(1) -			
		(2) -			