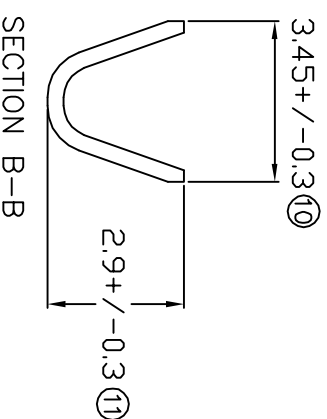
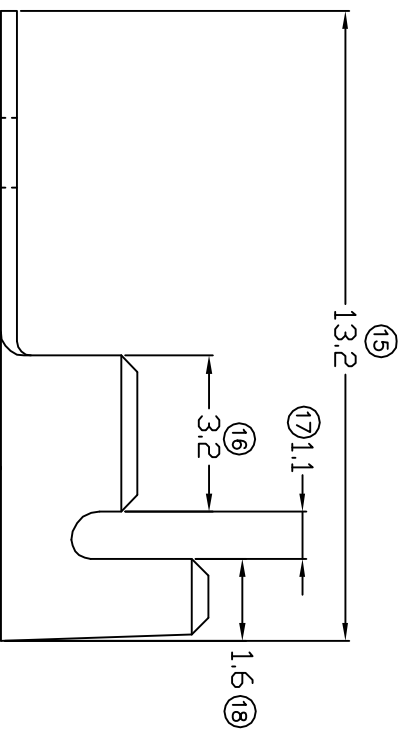
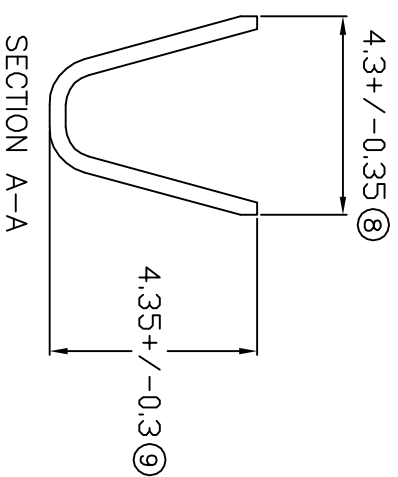
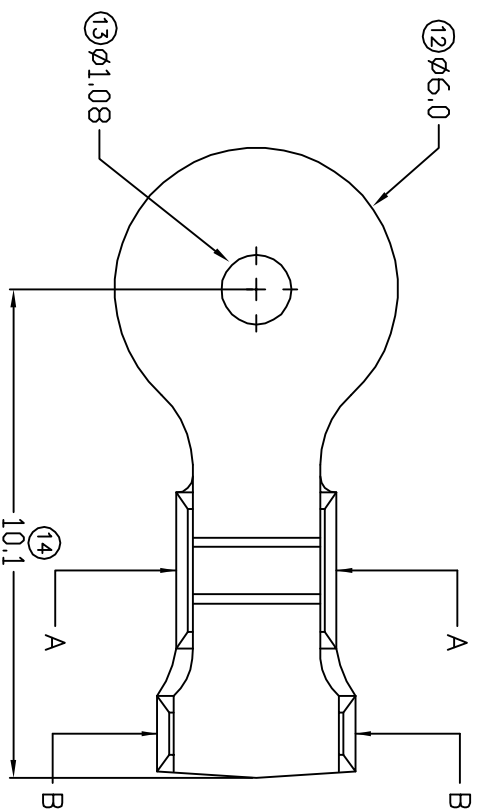


# TERMINALS SPECIFICATION DRAWING



FOR REFERENCE ONLY

- 7) CRIMPING WIRE TENSILE FORCE IS BASE ON COPPER BREAK OFF INTENSITY.
- 6) TEMPERATURE RANGE -40°C TO +120°C.
- 5) VOLTAGE-MAX [VOLTS] PER WIRE SPECIFICATION.
- 4) THICKNESS PLATING MORE THAN 40μ INCH.
- 3) PACKING QTY : 10000 PCS/REEL.
- 2) WIRE INSULATION (O.D) : 2.6MM.
- 1) APPLICABLE WIRE RANGE : 0.86-0.38MM<sup>2</sup>.

SPECIFICATION :

MATERIAL: t0.35 BRASS C2680		TIN PLATING		140611-2
DIMENSIONS : MM		TREATMENT SELECTIVE		140611-1
TOLERANCE UNLESS OTHERWISE SPECIFIED:		DWN: KS YEW		PART NUMBER
X.XXX +/-0.05 X.XX +/-0.10 X.X +/-0.20 X +/-0.50		CHK: SC CHOO		
REVISION: 04		APVD: CHUANG		PART NAME: RING TONGUE TERMINALS
SHEET OF : 1 / 1		SCALE : FREE		
EFFECTIVE DATE : 29/5/07		DRAWING NO: A1237		APPLICABLE (1) TERMINALS (2) HOUSING
				(1) - (2) -

**EPI** Terminals & Connectors  
Elamp Precision Industry(M) Sdn.Bhd.