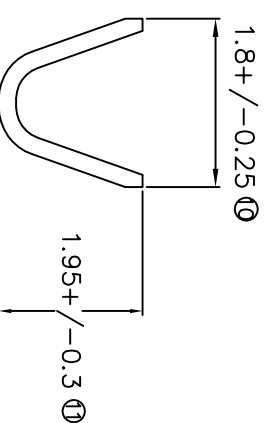
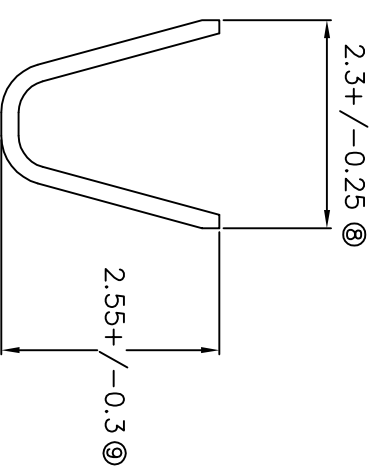
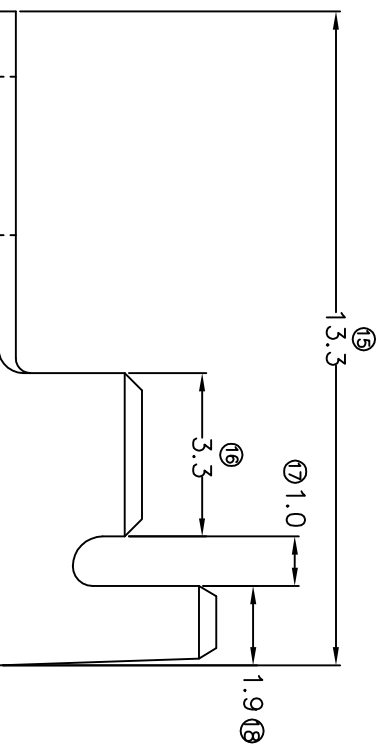
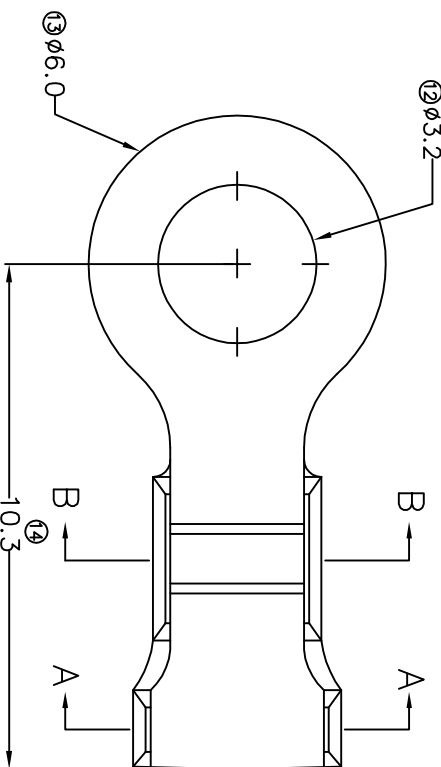


TERMINALS SPECIFICATION DRAWING



FOR REFERENCE ONLY

- 7) CRIMPING WIRE TENSILE FORCE IS BASE ON COPPER BREAK OFF INTENSITY.
- 6) TEMPERATURE RANGE -40°C TD +120°C.
- 5) VOLTAGE-MAX [VOLT(S)] PER WIRE SPECIFICATION.
- 4) THICKNESS PLATING MORE THAN 40μ INCH.
- 3) PACKING QTY : 20000 PCS/REEL.
- 2) WIRE INSULATION (O.D) : 1.4MM.
- 1) APPLICABLE WIRE RANGE : 0.30-0.13MM².

SPECIFICATION :

MATERIAL: t0.25 BRASS C2680		TIN PLATING		140632S-2
DIMENSIONS : MM TOLERANCE UNLESS OTHERWISE SPECIFIED:		DWN: KS YEW CHK: SC CHOO		140632S-1
TOLERANCE UNLESS OTHERWISE SPECIFIED: X.XXX +/-0.05 X.XX +/-0.10 X.X +/-0.20 X +/-0.50		TREATMENT SELECTIVE		PART NUMBER
REVISION: 04		APVD: CHUANG		
SHEET OF : 1 / 1		SCALE : FREE DRAWING NO:		
EFFECTIVE DATE : 4/5/07		A1275		
		EPI Terminals & Connectors Elamp Precision Industry(M) Sdn.Bhd.		
		PART NAME: RING TONGUE TERMINALS		
		APPLICABLE (1) TERMINALS (2) HOUSING		
		(1) - (2) -		