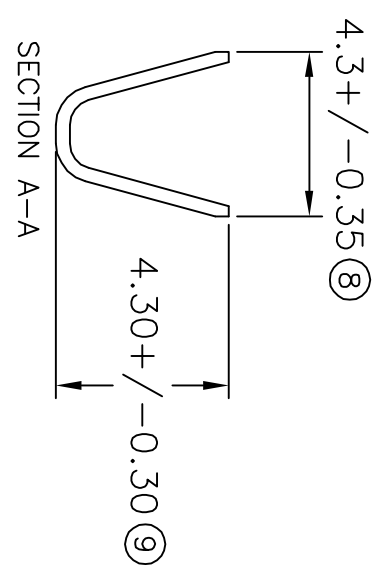
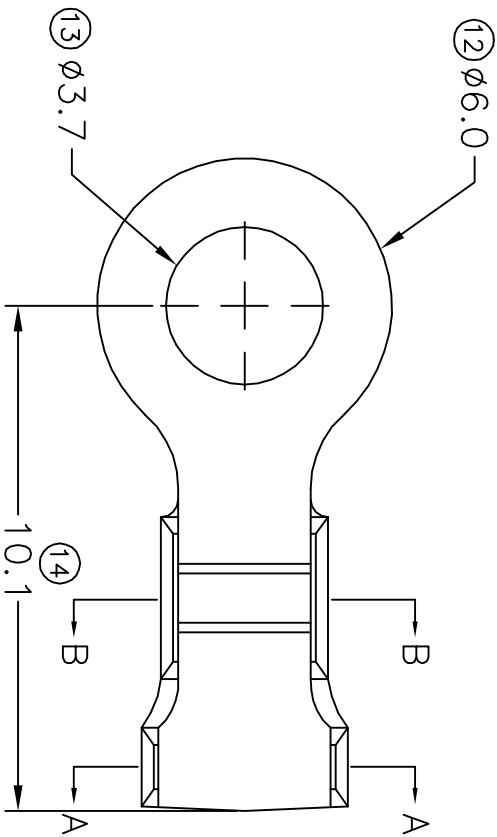
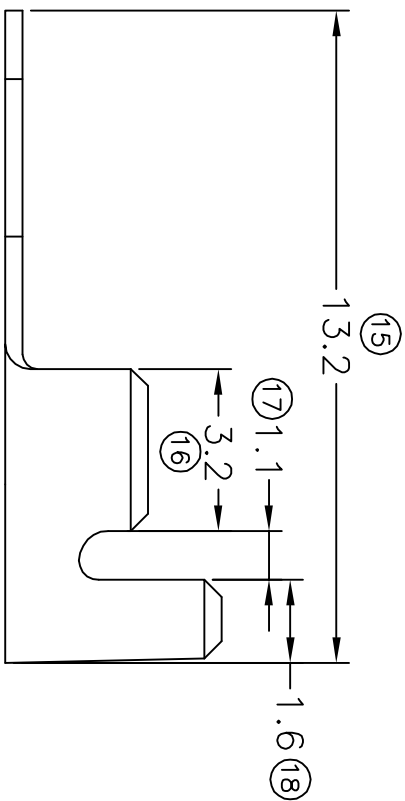
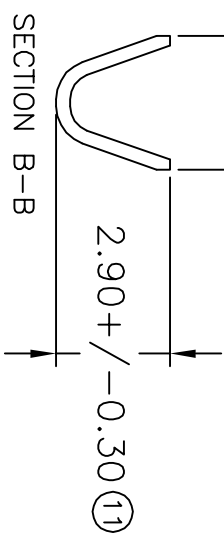


# TERMINALS SPECIFICATION DRAWING

UNCONTROLLED COPY



3.30 +/- 0.35 (10)



7) CRIMPING WIRE TENSILE FORCE IS BASE ON COPPER BREAK OFF INTENSITY.

6) TEMPERATURE RANGE -40°C TO +120°C.

5) VOLTAGE-MAX [VOLTS] PER WIRE SPECIFICATION

4) THICKNESS PLATING MORE THAN 40µ INCH.

3) PACKING QTY : 10000 PCS/REEL.

2) WIRE INSULATION (O.D) : 2.6MM.

1) APPLICABLE WIRE RANGE : 0.84-0.37MM<sup>2</sup>.

**FOR REFERENCE ONLY**

MATERIAL: TO.35 BRASS C2680		TIN PLATING NONE		140637-2 140637-1
DIMENSIONS : MM TOLERANCE UNLESS OTHERWISE SPECIFIED: X.XXX +/-0.05 X.XX +/-0.10 X.X +/-0.20 X +/-0.50		DWN: KS YEW CHK: SC CHOO APVD: Y.L CHUANG		TREATMENT SELECTIVE PART NUMBER
EFFECTIVE DATE : 29/5/07		SCALE : FREE DRAWING NO:		A1240
SHEET OF : 1 / 1		DRAWING NO:		(1) - (2) -

SPECIFICATION :