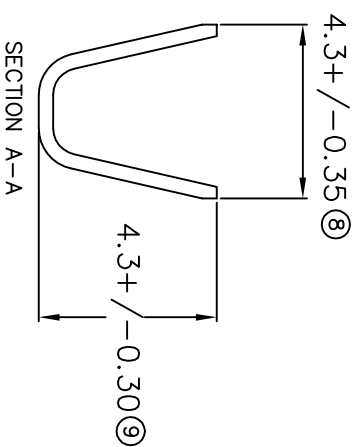
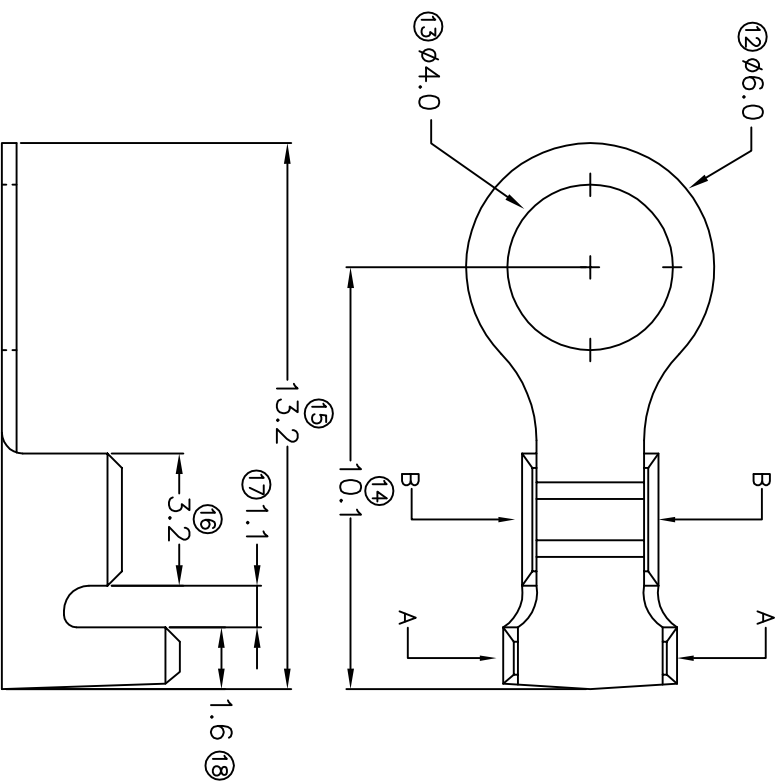
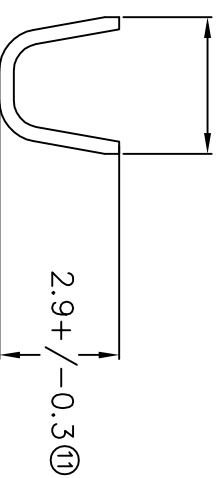


# TERMINALS SPECIFICATION DRAWING



3.3+/-0.35 (10)



FOR REFERENCE ONLY

- 7) CRIMPING WIRE TENSILE FORCE IS BASE ON COPPER BREAK OFF INTENSITY.
- 6) TEMPERATURE RANGE -40°C TO +120°C.
- 5) VOLTAGE-MAX (VOLTS) PER WIRE SPECIFICATION.
- 4) THICKNESS PLATING MORE THAN 40μ INCH.
- 3) PACKING QTY : 10000 PCS/REEL.
- 2) WIRE INSULATION (Q.D) : 2.6MM.
- 1) APPLICABLE WIRE RANGE : 0.84-0.37MM<sup>2</sup>.

<b>MATERIAL:</b> T0.35 BRASS C2680		<b>TIN PLATING</b> NONE		140640-2 140640-1
<b>DIMENSIONS : MM</b> TOLERANCE UNLESS OTHERWISE SPECIFIED: X.XXX +/-0.05 X.XX +/-0.10 X.X +/-0.20 X +/-0.50		<b>DWN: KS YEW</b> <b>CHK: SC CHOO</b> <b>APVD: CHUANG</b> SCALE : FREE DRAWING NO: A1342		<b>TREATMENT SELECTIVE</b> <b>PART NUMBER</b>
<b>REVISION:</b> 04		<b>APPLICABLE (1) TERMINALS (2) HOUSING</b> (1) _____ (2) _____		<b>EPJ</b> Terminals & Connectors Elamp Precision Industry(M) Sdn.Bhd. PART NAME: RING TONGUE TERMINALS
<b>EFFECTIVE DATE :</b> 17/7/07		SHEET OF : 1 / 1		