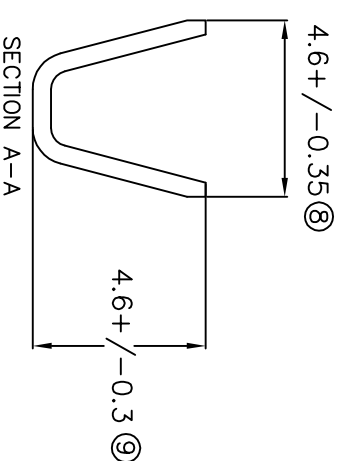
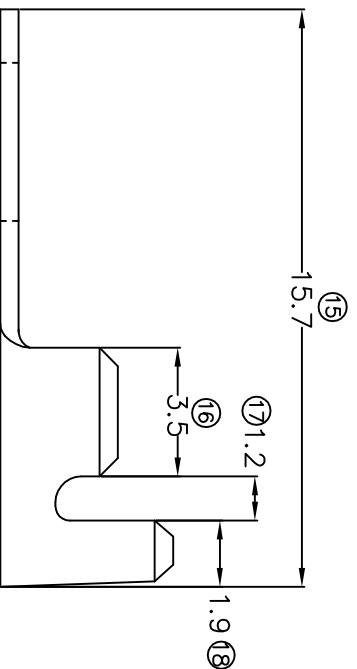
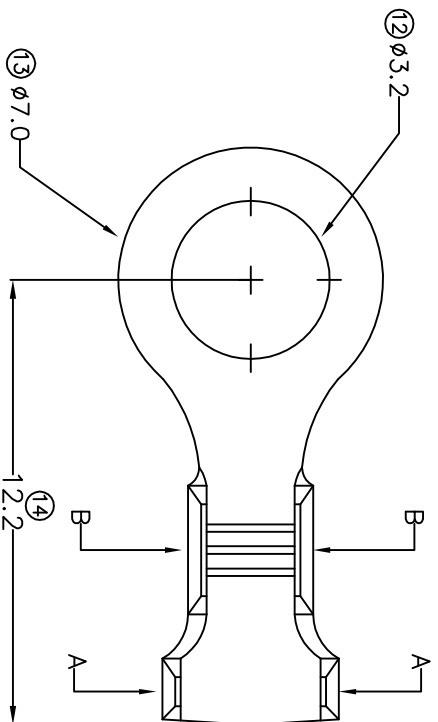
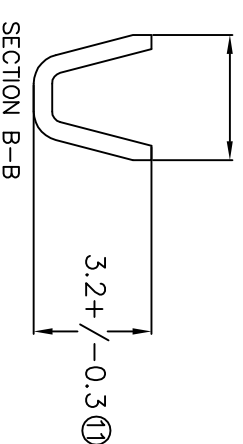


# TERMINALS SPECIFICATION DRAWING



3.5+/-0.35 (10)



FOR REFERENCE ONLY

- 7) CRIMPING WIRE TENSILE FORCE IS BASE ON COPPER BREAK OFF INTENSITY.
- 6) TEMPERATURE RANGE: -40°C TD +120°C.
- 5) VOLTAGE-MAX [VOLTS] PER WIRE SPECIFICATION
- 4) THICKNESS PLATING MORE THAN 40μ INCH.
- 3) PACKING QTY : 8000 PCS/REEL.
- 2) WIRE INSULATION (O.D) : 2.6MM.
- 1) APPLICABLE WIRE RANGE : 1.15-0.59MM<sup>2</sup>.

SPECIFICATION :

MATERIAL: 10.50 BRASS C2680		TIN PLATING		140732-2
DIMENSIONS : MM		TREATMENT SELECTIVE		140732-1
TOLERANCE UNLESS OTHERWISE SPECIFIED:		DWN:KS YEW		<b>EPI</b> Terminals & Connectors Elamp Precision Industry(M) Sdn.Bhd.
X.XXX +/-0.05 X.XX +/-0.10 X.X +/-0.20 X +/-0.50		CHK: SC CHOO		
REVISION: 07		APVD: CHUANG		PART NAME: RING TONGUE TERMINALS
SHEET OF : 1 / 1		SCALE : FREE		APPLICABLE (1) TERMINALS (2) HOUSING
EFFECTIVE DATE : 17/7/07		DRAWING NO: A1238		(1) - (2) -