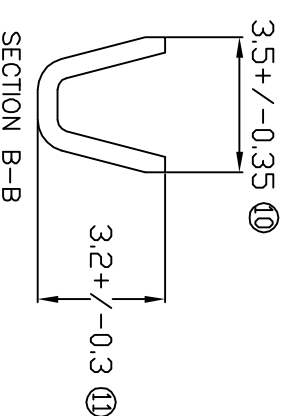
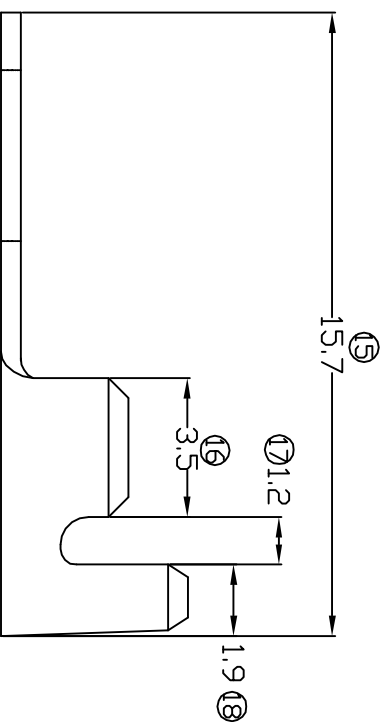
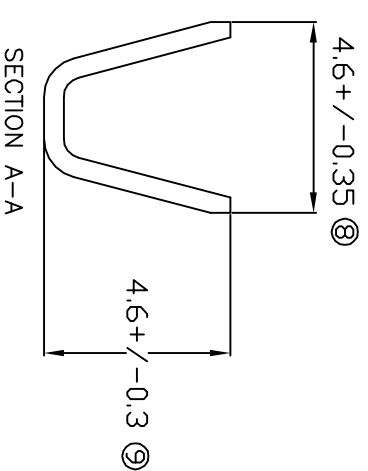
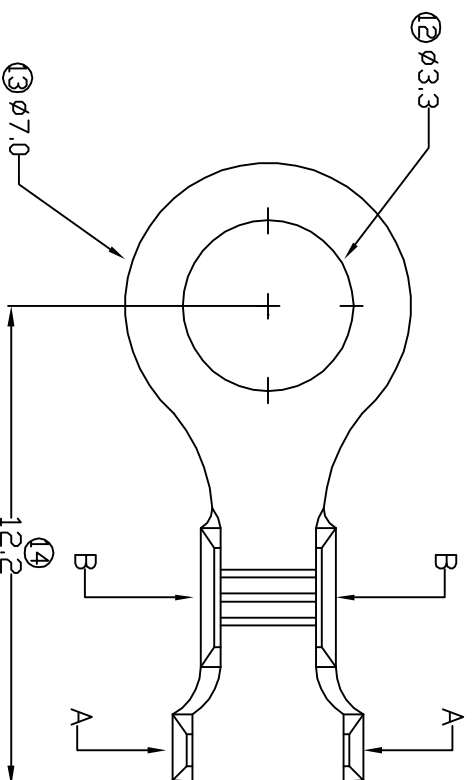


# TERMINALS SPECIFICATION DRAWING



FOR REFERENCE ONLY

- 7) CRIMPING WIRE TENSILE FORCE IS BASE ON COPPER BREAK OFF INTENSITY.
- 6) TEMPERATURE RANGE -40°C TO +120°C.
- 5) VOLTAGE-MAX [VOLTS] PER WIRE SPECIFICATION.
- 4) THICKNESS PLATING MORE THAN 40μ INCH.
- 3) PACKING QTY : 8000 PCS/REEL.
- 2) WIRE INSULATION (O.D) : 2.5MM.
- 1) APPLICABLE WIRE RANGE : 1.13-0.58MM<sup>2</sup>.

SPECIFICATION :

MATERIAL: TO.50 BRASS C2680		TIN PLATING NONE	
DIMENSIONS : MM		TREATMENT SELECTIVE	
TOLERANCE UNLESS OTHERWISE SPECIFIED: X.XXX +/-0.05 X.XX +/-0.10 X.X +/-0.20 X +/-0.50		DWN: KS YEW	
REVISION: 07		CHK: SC CHOO Y.L APVD: CHUANG	
SHEET OF : 1 / 1		SCALE : FREE DRAWING NO:	
EFFECTIVE DATE : 29/5/07		A1355	
PART NAME: RING TONGUE TERMINALS		APPLICABLE (1) TERMINALS (2) HOUSING (1) - (2) -	
EPI Terminals & Connectors Elamp Precision Industry(M) Sdn.Bhd.		140733-2 140733-1 PART NUMBER	