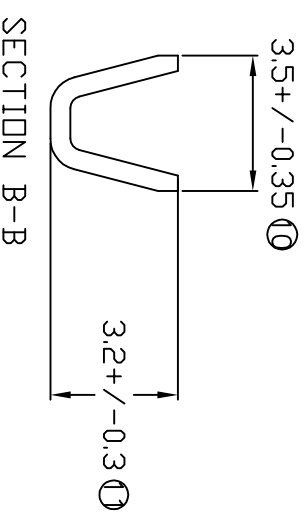
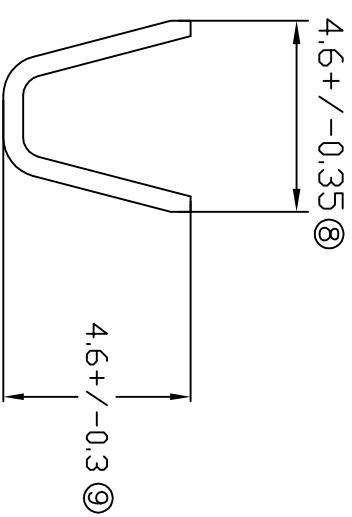
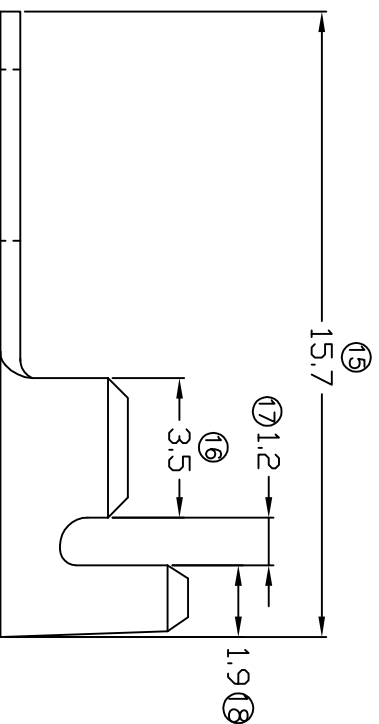
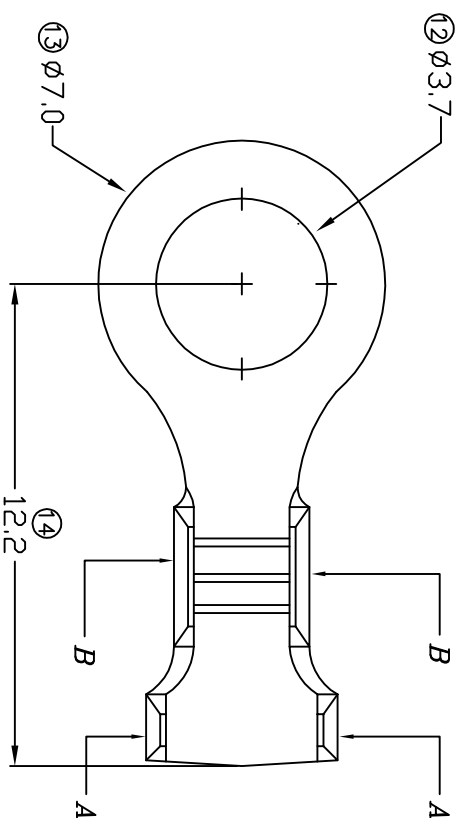


TERMINALS SPECIFICATION DRAWING



FOR REFERENCE ONLY

- 7) CRIMPING WIRE TENSILE FORCE IS BASE ON COPPER BREAK OFF INTENSITY.
- 6) TEMPERATURE RANGE -40°C TO +120°C.
- 5) VOLTAGE-MAX (VOLTS) PER WIRE SPECIFICATION.
- 4) THICKNESS PLATING MORE THAN 40μ INCH.
- 3) PACKING QTY : 8000 PCS/REEL.
- 2) WIRE INSULATION (O.D) : 2.6MM.
- 1) APPLICABLE WIRE RANGE : 1.12-0.57MM².

SPECIFICATION :

MATERIAL: TO.50 BRASS C2680		TIN PLATING NONE		140737-2 140737-1
DIMENSIONS : MM TOLERANCE UNLESS OTHERWISE SPECIFIED: X.XXX +/-0.05 X.XX +/-0.10 X.X +/-0.20 X +/-0.50		DWN: KS YE W CHK: SC CHOO Y.L APVD: CHUANG		PART NUMBER
EFFECTIVE DATE : 30/5/07		SCALE : FREE DRAWING NO:		APPLICABLE (1) TERMINALS (2) HOUSING (1) - (2) -
REVISION: 04		SHEET OF : 1 / 1		A1248