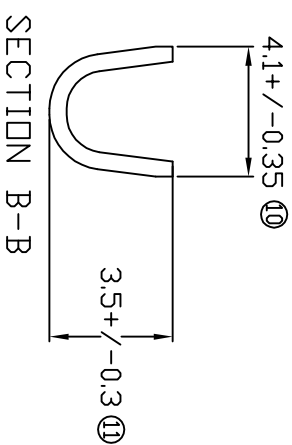
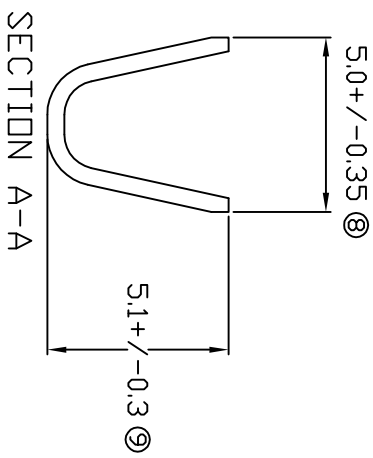
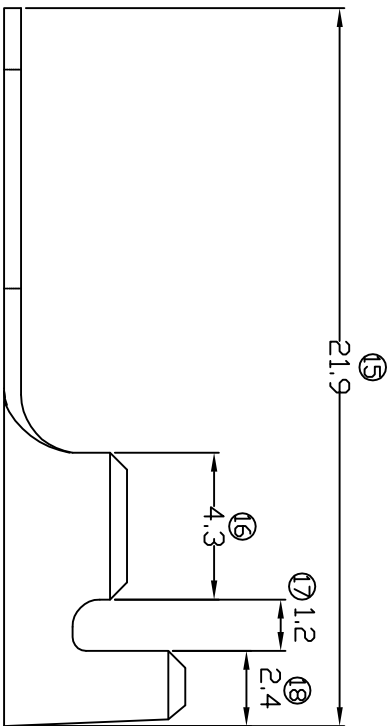
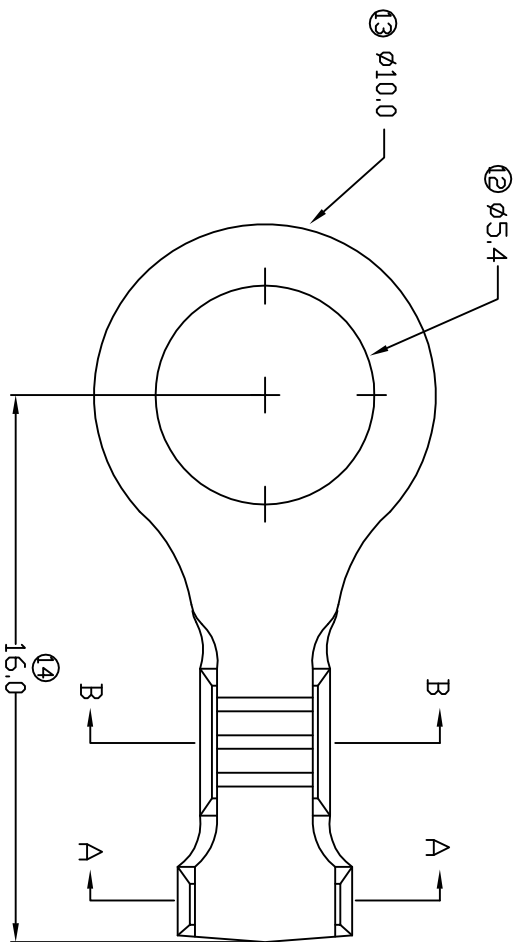


# TERMINALS SPECIFICATION DRAWING



FOR REFERENCE ONLY

- 7) CRIMPING WIRE TENSILE FORCE IS BASE ON COPPER BREAK OFF INTENSITY.
- 6) TEMPERATURE RANGE -40°C TD +120°C.
- 5) VOLTAGE-MAX [VOLTS] PER WIRE SPECIFICATION.
- 4) THICKNESS PLATING MORE THAN 40 μ INCH.
- 3) PACKING QTY : 5000 PCS/REEL.
- 2) WIRE INSULATION (O.D) : 2.9MM.
- 1) APPLICABLE WIRE RANGE : 1.49-0.76MM<sup>2</sup>.

SPECIFICATION :

MATERIAL: 10.50 BRASS		TIN PLATING	
C2680		NONE	
DIMENSIONS : MM		TREATMENT SELECTIVE	
DWN: KS YE'V		PART NUMBER	
TOLERANCE UNLESS OTHERWISE SPECIFIED:		141054-2	
X.XXX	+/-0.05	CHK: SC CHOO	141054-1
X.XX	+/-0.10	Y'L	
X.X	+/-0.20	APVD: CHUANG	
X	+/-0.50	SCALE : FREE	
EFFECTIVE DATE : 30/5/07		DRAWING NO:	
SHEET OF : 1 / 1		A1287	
REVISION: 04		PART NAME:	
TOLERANCE UNLESS OTHERWISE SPECIFIED:		Eiamp Precision Industry(M) Sdn.Bhd.	
X.XXX	+/-0.05	RING TONGUE TERMINALS	
X.XX	+/-0.10	APPLICABLE (1) TERMINALS (2) HOUSING	
X.X	+/-0.20	(1) -	
X	+/-0.50	(2) -	