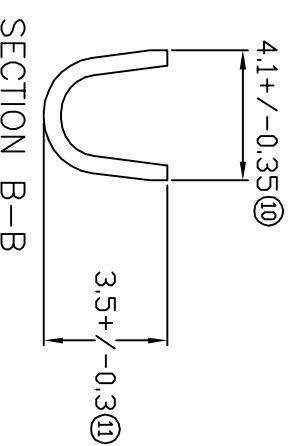
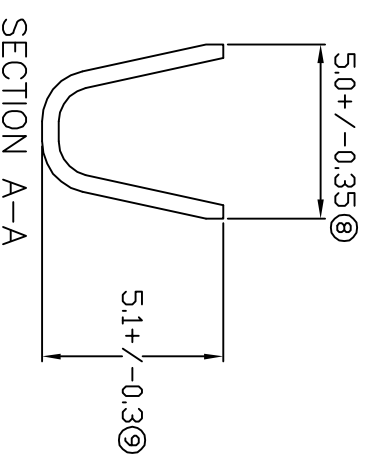
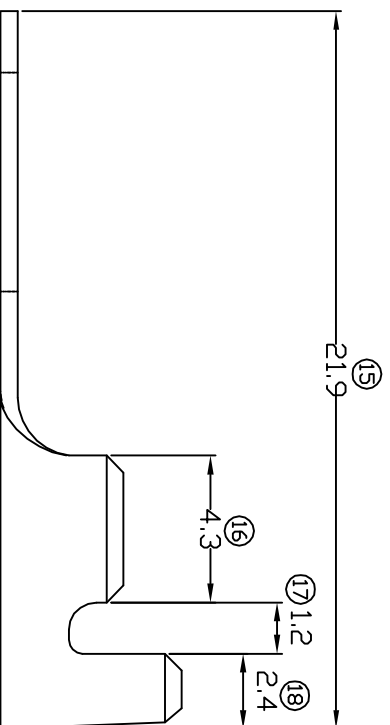
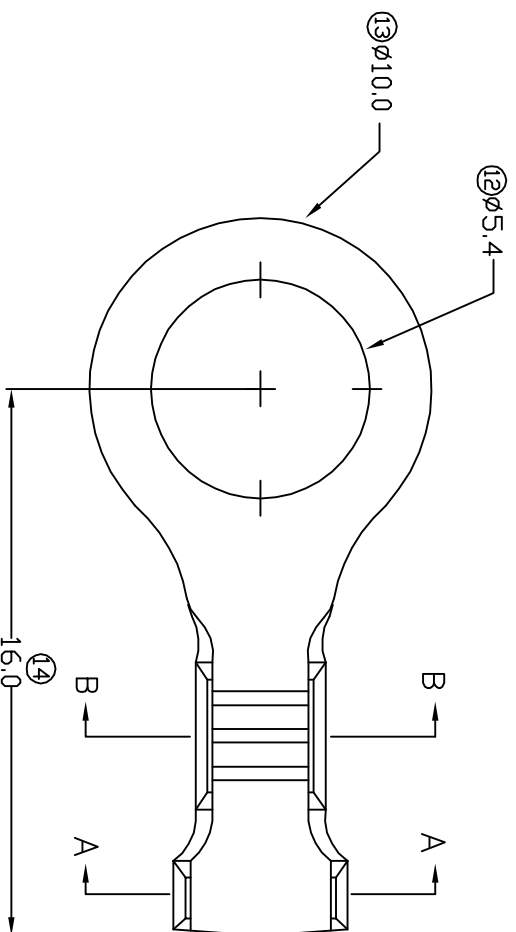


TERMINALS SPECIFICATION DRAWING



FOR REFERENCE ONLY

- 7) CRIMPING WIRE TENSILE FORCE IS BASE ON COPPER BREAK OFF INTENSITY.
- 6) TEMPERATURE RANGE -40° TO +120°.
- 5) VOLTAGE-MAX [VOLTS] PER WIRE SPECIFICATION.
- 4) THICKNESS PLATING MORE THAN 40μ INCH.
- 3) PACKING QTY : 5000 PCS/REEL.
- 2) WIRE INSULATION (O.D) : 2.9MM.
- 1) APPLICABLE WIRE RANGE : 1.45-0.74MM².

SPECIFICATION :

MATERIAL: TO.60 BRASS C2680		TIN PLATING NONE		141055-2
DIMENSIONS : MM		TREATMENT SELECTIVE		PART NUMBER
TOLERANCE UNLESS OTHERWISE SPECIFIED: X.XXX +/-0.05 X.XX +/-0.10 X.X +/-0.20 X +/-0.50		DWN: KS YEW	EPI Terminals & Connectors Elamp Precision Industry(M) Sdn.Bhd.	
REVISION: 00		CHK: HY LIM Y.L	PART NAME: RING TONGUE TERMINALS	
SHEET OF : 1 / 1		APVD: CHUANG	APPLICABLE (1) TERMINALS (2) HOUSING	
EFFECTIVE DATE : 8/1/08		SCALE : FREE DRAWING NO:	(1) - (2) -	
		A1520-1		