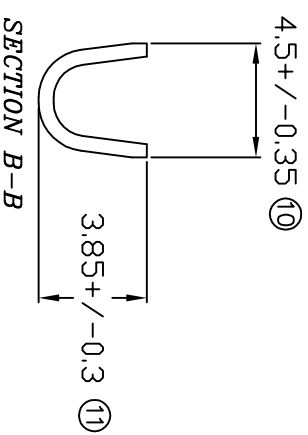
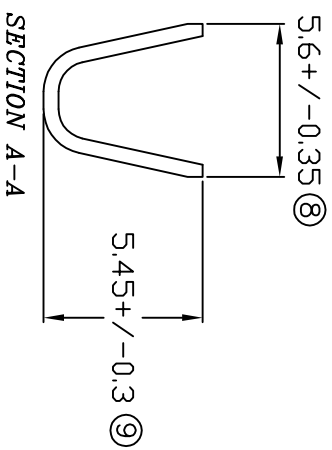
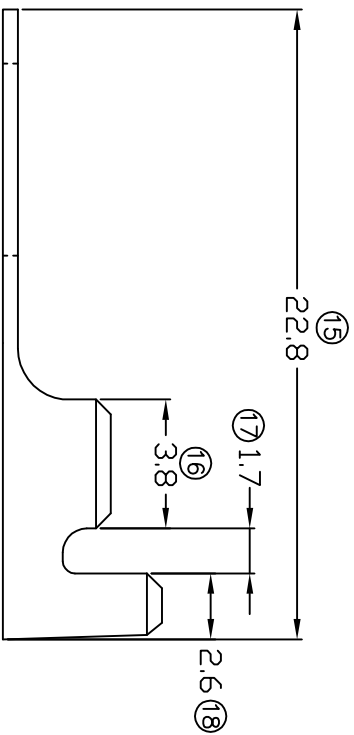
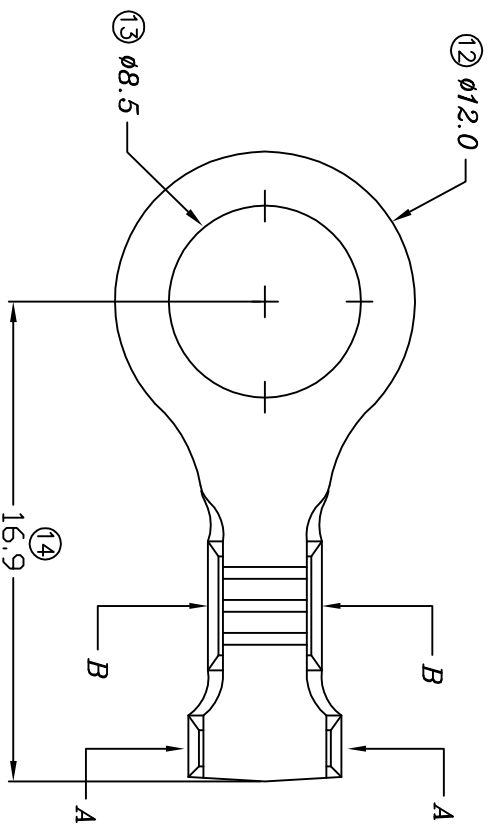


TERMINALS SPECIFICATION DRAWING



FOR REFERENCE ONLY

- 7) CRIMPING WIRE TENSILE FORCE IS BASE ON COPPER BREAK OFF INTENSITY.
- 8) TEMPERATURE RANGE: -40°C TO +120°C.
- 9) VOLTAGE-MAX (VOLTS) PER WIRE SPECIFICATION.
- 4) THICKNESS PLATING MORE THAN 40 μ INCH.
- 3) PACKING QTY : 3500 PCS/REEL.
- 2) WIRE INSULATION (O.D) : 3.2MM.
- 1) APPLICABLE WIRE RANGE : 1.87-0.95MM².

SPECIFICATION :

MATERIAL: 10.50 BRASS C2680		TIN PLATING NONE		141285A-2
DIMENSIONS : MM TOLERANCE UNLESS OTHERWISE SPECIFIED: X.XXX +/-0.05 X.XX +/-0.10 X.X +/-0.20 X +/-0.50		DWN: KS YE'W CHK: SC CHOO APVD: CHUANG Y.L SCALE : FREE DRAWING NO:		PART NUMBER 141285A-1
EFFECTIVE DATE : 31/5/07		TREATMENT SELECTIVE		PART NAME: Elamp Precision Industry(M) Sdn.Bhd. RING TONGUE TERMINALS
SHEET OF : 1 / 1		A1259		APPLICABLE (1) TERMINALS (2) HOUSING (1) - (2) -