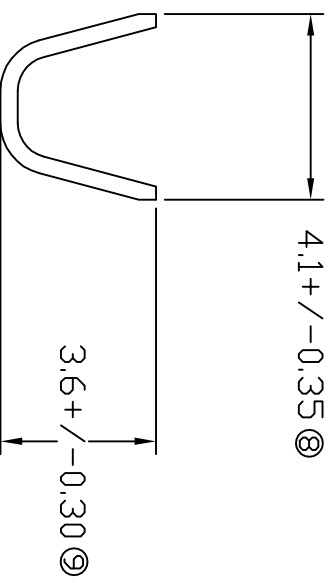
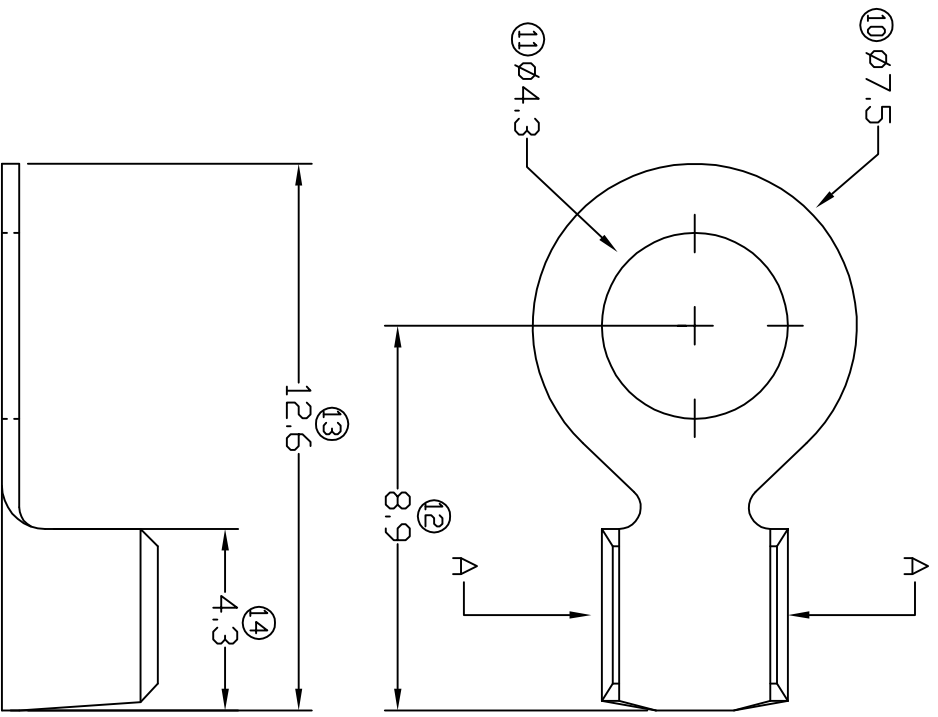


# TERMINALS SPECIFICATION DRAWING



FOR REFERENCE ONLY

- 7) CRIMPING WIRE TENSILE FORCE IS BASE ON COPPER BREAK OFF INTENSITY.
- 6) TEMPERATURE RANGE  $-40^{\circ}\text{C}$  TO  $+120^{\circ}\text{C}$ .
- 5) VOLTAGE-MAX (V/DLTS1 PER WIRE SPECIFICATION.
- 4) THICKNESS PLATING MORE THAN  $40\ \mu\text{m}$  INCH.
- 3) PACKING QTY : 10000 PCS/REEL.
- 2) WIRE INSULATION (O.D) : - MM.
- 1) APPLICABLE WIRE RANGE :  $1.59-0.81\text{MM}^2$ .

SPECIFICATION :

MATERIAL: TO.40 BRASS C2680		TIN PLATING NONE		142843A-2 142843A-1
DIMENSIONS : MM		DWN: KS YE'V		TREATMENT SELECTIVE PART NUMBER
TOLERANCE UNLESS OTHERWISE SPECIFIED:		CHK: SC CHOO APVD: CHUANG Y.L		PART NAME: Elamp Precision Industry(M) Sdn.Bhd. RING TONGUE TERMINALS APPLICABLE (1) TERMINALS (2) HOUSING
X.XXX $+/-0.05$ X.XX $+/-0.10$ X.X $+/-0.20$ X $+/-0.50$	SCALE : FREE DRAWING NO:	EFFECTIVE DATE : 31/5/07		
REVISION: 03		SHEET OF : 1 / 1		