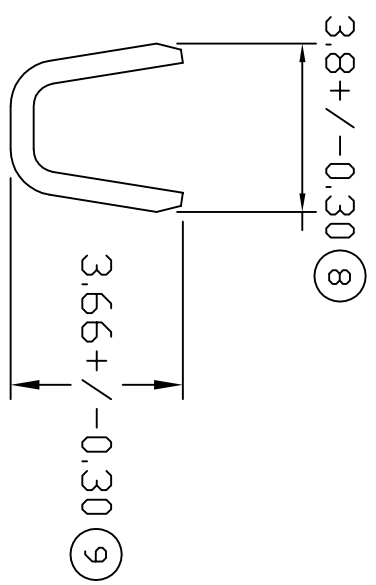
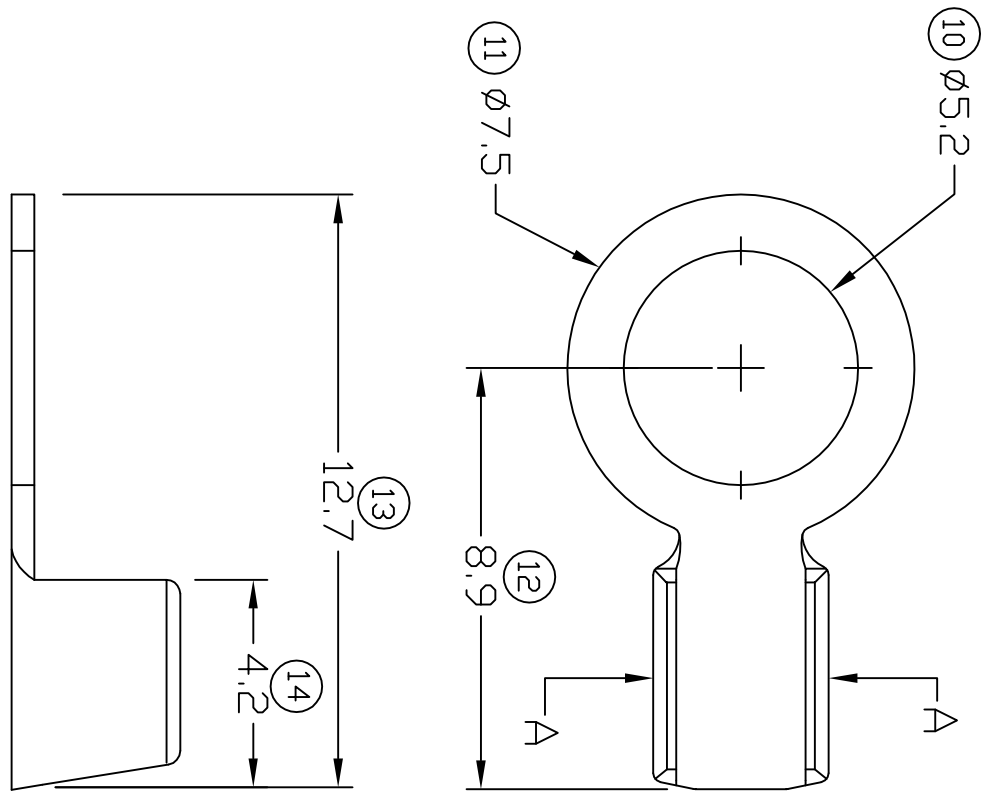


# TERMINALS SPECIFICATION DRAWING



SECTION A

**FOR REFERENCE ONLY**

- 7) CRIMPING WIRE TENSILE FORCE IS BASE ON COPPER BREAK OFF INTENSITY.
- 6) TEMPERATURE RANGE -40°C TO +120°C.
- 5) VOLTAGE-MAX [V(DLTS)] PER WIRE SPECIFICATION.
- 4) THICKNESS PLATING THAN 40μ INCH.
- 3) PACKING QTY : 10000 PCS/REEL.
- 2) WIRE INSULATION (GID) : - MM.
- 1) APPLICABLE WIRE RANGE : 148-0.75MM<sup>2</sup>.

SPECIFICATION :

<b>MATERIAL:</b> t0.50 BRASS C2680	<b>TIN PLATING</b> NONE	<b>142852A-2</b>	
<b>DIMENSIONS :</b> MM	<b>TREATMENT SELECTIVE</b>	<b>PART NUMBER</b>	
<b>TOLERANCE UNLESS OTHERWISE SPECIFIED:</b>	<b>DWN:</b> KS YE'W	<b>EPi</b> Terminals & Connectors	
X.XXX +/ -0.05 X.XX +/ -0.10 X.X +/ -0.20 X +/-0.50	<b>CHK:</b> HY LIM	Elamp Precision Industry(M) Sdn.Bhd.	
<b>REVISION:</b> 00	<b>APVD:</b> Y'L CHUANG	<b>PART NAME:</b> RING TONGUE TERMINALS	
<b>SHEET OF :</b> 1 / 1	<b>SCALE :</b> FREE	<b>APPLICABLE (1) TERMINALS (2) HOUSING</b>	(1) - (2) -
<b>EFFECTIVE DATE :</b> 20/9/07	<b>DRAWING NO:</b> A1515		