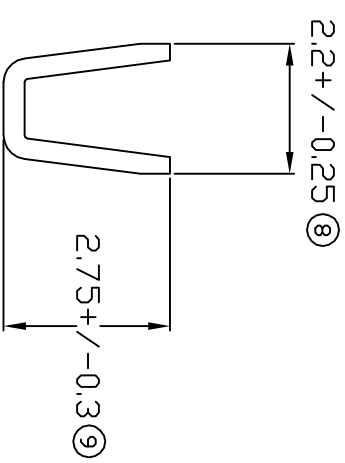
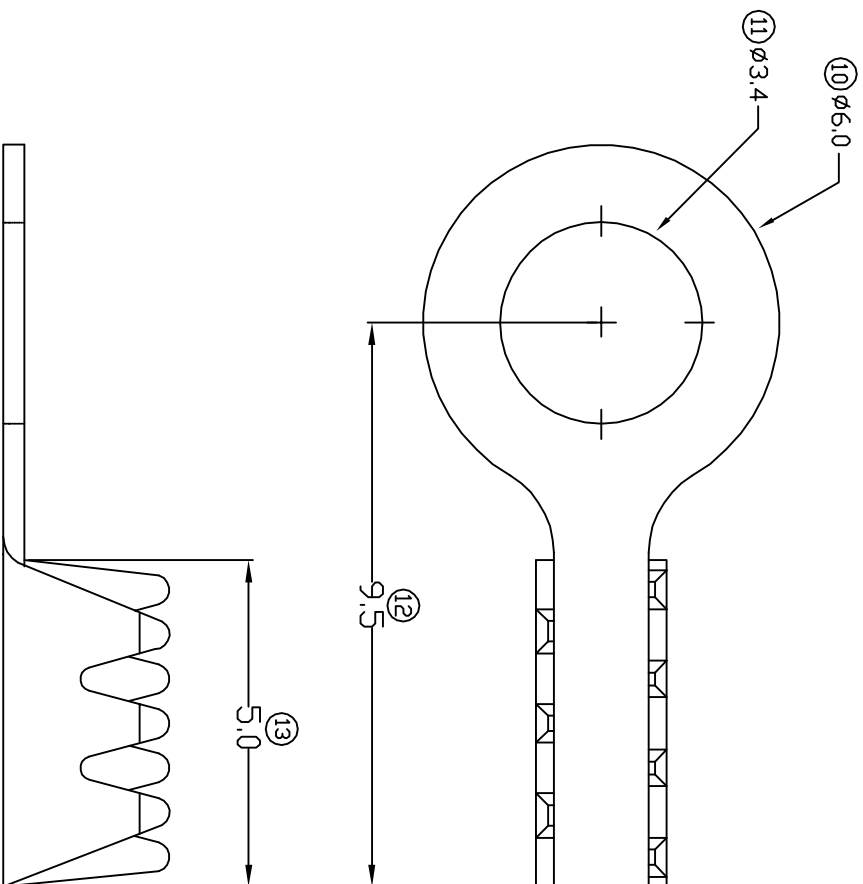


TERMINALS SPECIFICATION DRAWING



FOR REFERENCE ONLY

- 7) CRIMPING WIRE TENSILE FORCE IS BASE ON COPPER BREAK OFF INTENSITY.
- 6) TEMPERATURE RANGE -40°C TO +120°C.
- 5) VOLTAGE-MAX [VOLTS] PER WIRE SPECIFICATION.
- 4) THICKNESS PLATING MORE THAN 40µ INCH.
- 3) PACKING QTY : 20000 PCS/REEL.
- 2) WIRE INSULATION (O.D) : 0.95MM.
- 1) APPLICABLE WIRE RANGE : #AWG26/1061.

SPECIFICATION :

MATERIAL: t0.35 BRASS C2680		TIN PLATING NONE		143634A-2 143634A-1
DIMENSIONS : MM TOLERANCE UNLESS OTHERWISE SPECIFIED: X.XXX +/-0.05 X.XX +/-0.10 X.X +/-0.20 X +/-0.50		DWN: KS YEW CHK: SC CHOO APVD: CHUANG SCALE : FREE DRAWING NO:		TREATMENT SELECTIVE PART NUMBER
REVISION: 02		Y.L RING TONGUE TERMINALS APPLICABLE (1) TERMINALS (2) HOUSING		PART NAME: EPI Terminals & Connectors Elamp Precision Industry(M) Sdn.Bhd.
SHEET OF : 1 / 1		EFFECTIVE DATE : 11/7/07		A1340 (1) - (2) -