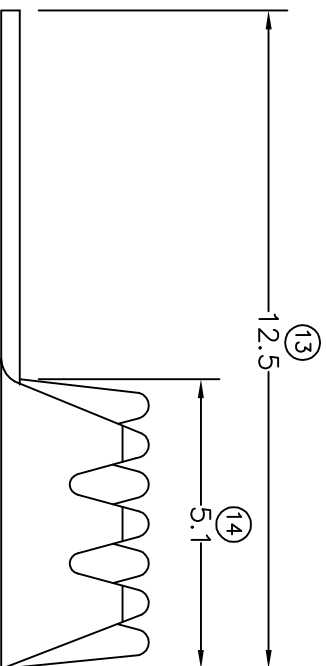
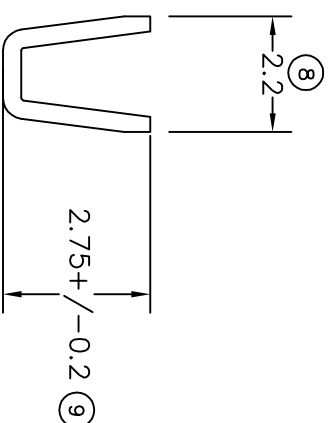
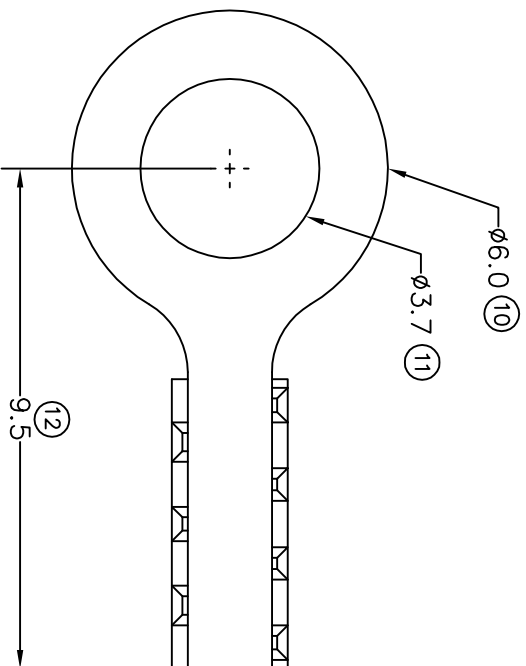


TERMINALS SPECIFICATION DRAWING



FOR REFERENCE ONLY

- 7) CRIMPING WIRE TENSILE FORCE IS BASE ON COPPER BREAK OFF INTENSITY.
- 6) TEMPERATURE RANGE -40°C TO +120°C.
- 5) VOL TAGE-MAX (VOLT) PER WIRE SPECIFICATION.
- 4) THICKNESS PLATING MORE THAN 40 μ INCH.
- 3) PACKING QTY : 20000 PCS/REEL.
- 2) WIRE INSULATION (O.D) : 0.95MM.
- 1) APPLICABLE WIRE RANGE : #AWG 26/1061.

SPECIFICATION :

MATERIAL: 10.35 BRASS C2680	TIN PLATING		
DIMENSIONS : MM	DWN: KS YE W	TREATMENT SELECTIVE	PART NUMBER
TOLERANCE UNLESS OTHERWISE SPECIFIED:	CHK: SC CHOO	NONE	143636A-2
X.XXX +/-0.05	APVD: CHUANG	SCALE : FREE	143636A-1
X.XX +/-0.10	CHK: YL	DRAWING NO:	
X.X +/-0.20	SCALE : FREE	A1339	
X +/-0.50	DRAWING NO:	EFFECTIVE DATE :	
		23/8/07	
REVISION: 01	APPLICABLE (1) TERMINALS (2) HOUSING		
	(1) -		
SHEET OF : 1 / 1	(2) -		

EPI Terminals & Connectors
Elamp Precision Industry(M) Sdn.Bhd.