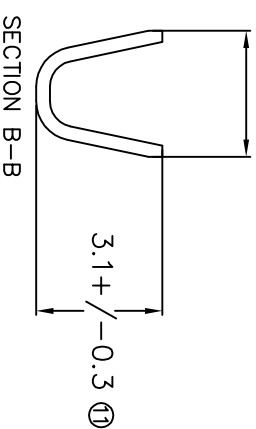
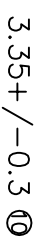
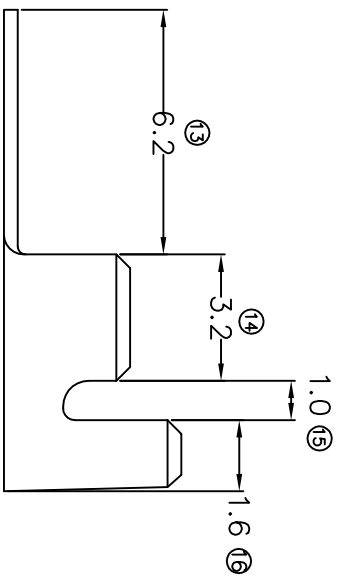
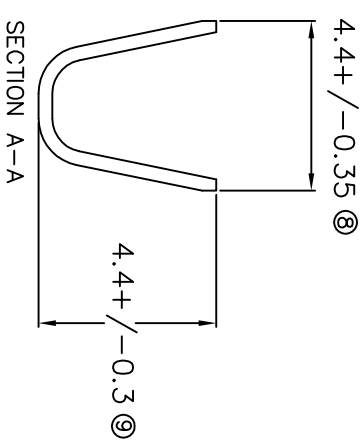
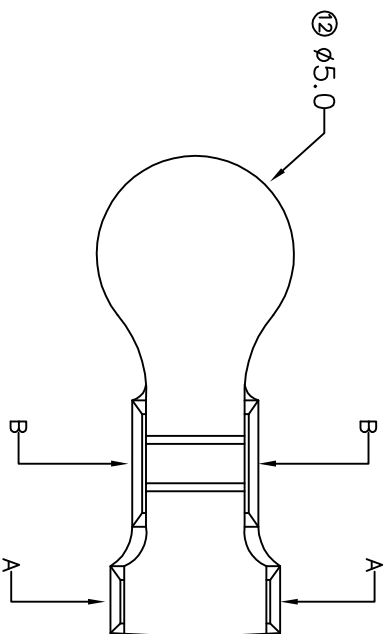


# TERMINALS SPECIFICATION DRAWING



FOR REFERENCE ONLY

- 7) CRIMPING WIRE TENSILE FORCE IS BASE ON COPPER BREAK OFF INTENSITY.
- 6) TEMPERATURE RANGE -40°C TD +120°C.
- 5) VOLTAGE-MAX [V(DLTS)] PER WIRE SPECIFICATION
- 4) THICKNESS PLATING MORE THAN 40μ INCH.
- 3) PACKING QTY : 10000 PCS/REEL.
- 2) WIRE INSULATION (O.D) : 2.6MM.
- 1) APPLICABLE WIRE RANGE : 0.89-0.39MM<sup>2</sup>.

SPECIFICATION :

<b>MATERIAL:</b> 10.35 BRASS C2680	<b>TIN PLATING</b>	<b>14500-2</b>
<b>DIMENSIONS :</b> MM	<b>TREATMENT SELECTIVE</b>	<b>14500-1</b>
<b>TOLERANCE UNLESS OTHERWISE SPECIFIED:</b>	<b>DWN: K.S YEW</b>	<b>PART NUMBER</b>
X:XXX +/-0.05	<b>CHK: S.C CHOO</b>	<b>EPI</b> Terminals & Connectors Elamp Precision Industry(M) Sdn.Bhd.
X:XX +/-0.10	<b>APVD: CHUANG</b>	
X:X +/-0.20	<b>SCALE : FREE</b>	<b>PART NAME:</b> RING TONGUE TERMINALS
X +/-0.50	<b>DRAWING NO:</b> A1338	<b>APPLICABLE (1) TERMINALS (2) HOUSING</b>
<b>EFFECTIVE DATE :</b> 3/5/07	<b>SHEET OF :</b> 1 / 1	(1) - (2) -