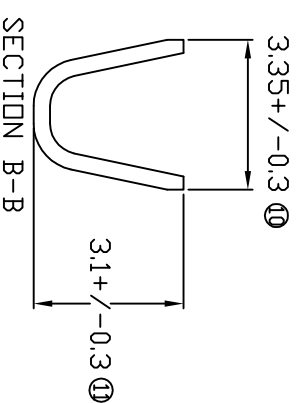
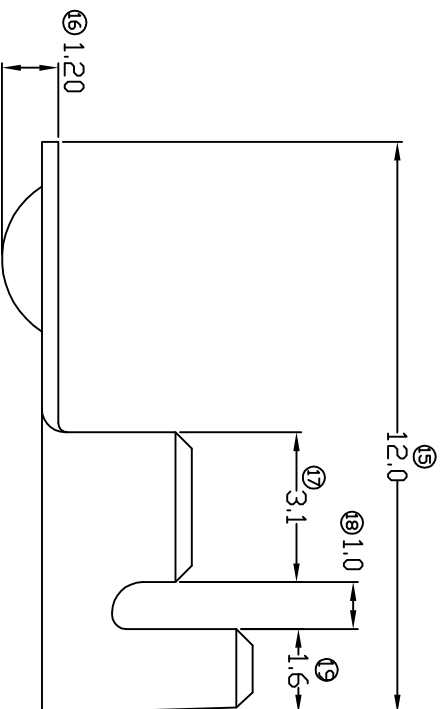
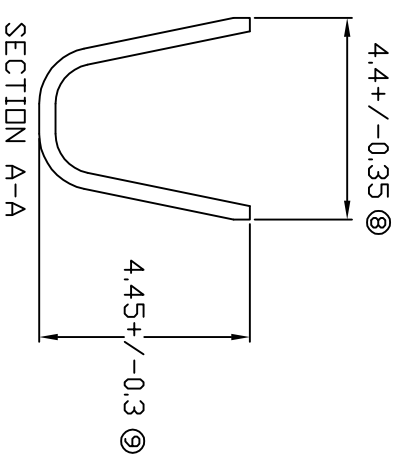
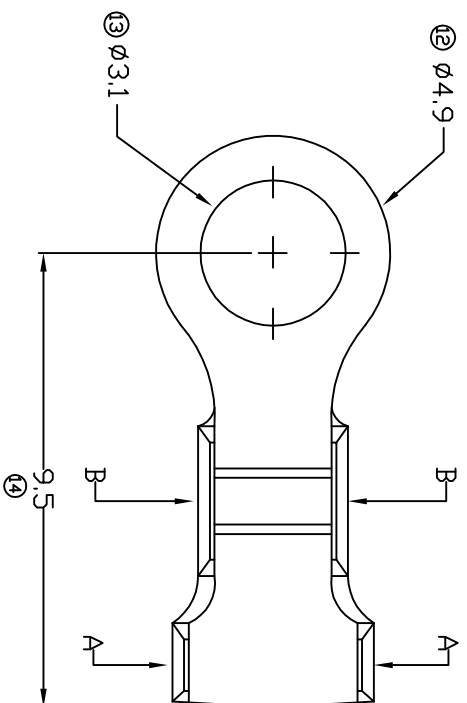


# TERMINALS SPECIFICATION DRAWING



FOR REFERENCE ONLY

- 7) CRIMPING WIRE TENSILE FORCE IS BASE ON COPPER BREAK OFF INTENSITY.
- 6) TEMPERATURE RANGE -40°C TO +120°C.
- 5) VOL TAGE-MAX (VOLT) PER WIRE SPECIFICATION.
- 4) THICKNESS PLATING MORE THAN 40μ INCH.
- 3) PACKING QTY : 10000 PCS/REEL.
- 2) WIRE INSULATION (O.D) : 2.5MM.
- 1) APPLICABLE WIRE RANGE : 0.88-0.39MM<sup>2</sup>.

**SPECIFICATION :**

<b>MATERIAL:</b> t0.35 BRASS	<b>TIN PLATING</b>		
C2680	NONE	14502-2	
<b>DIMENSIONS :</b> MM	<b>TREATMENT SELECTIVE</b>	PART NUMBER	
TOLERANCE UNLESS OTHERWISE SPECIFIED:	DWN: KS YE W	<b>EPI</b> Terminals & Connectors	
X.XXX +/-0.05	CHK: SC CHOO	Elamp Precision Industry(M) Sdn.Bhd.	
X.XX +/-0.10	APVD: CHUANG	<b>PART NAME:</b>	
X.X +/-0.20	SCALE : FREE	RING TONGUE TERMINALS	
X +/-0.50	DRAWING NO:	APPLICABLE (1) TERMINALS (2) HOUSING	
<b>EFFECTIVE DATE :</b> 14/5/07	A1361	(1) -	
		(2) -	

REVISION:  
04



SHEET OF :  
1 / 1