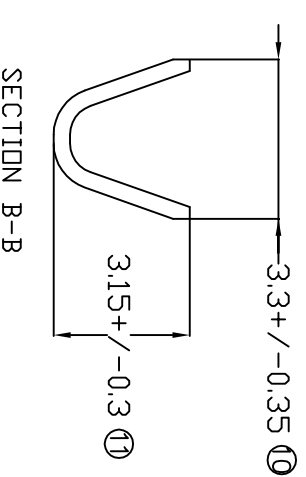
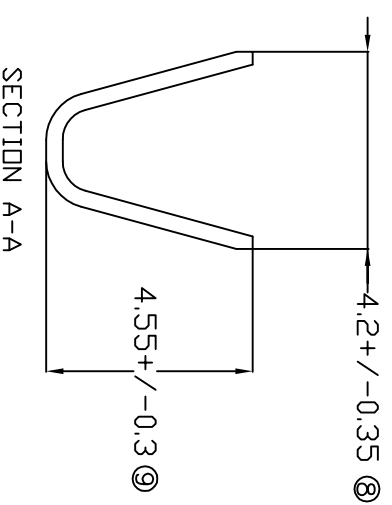
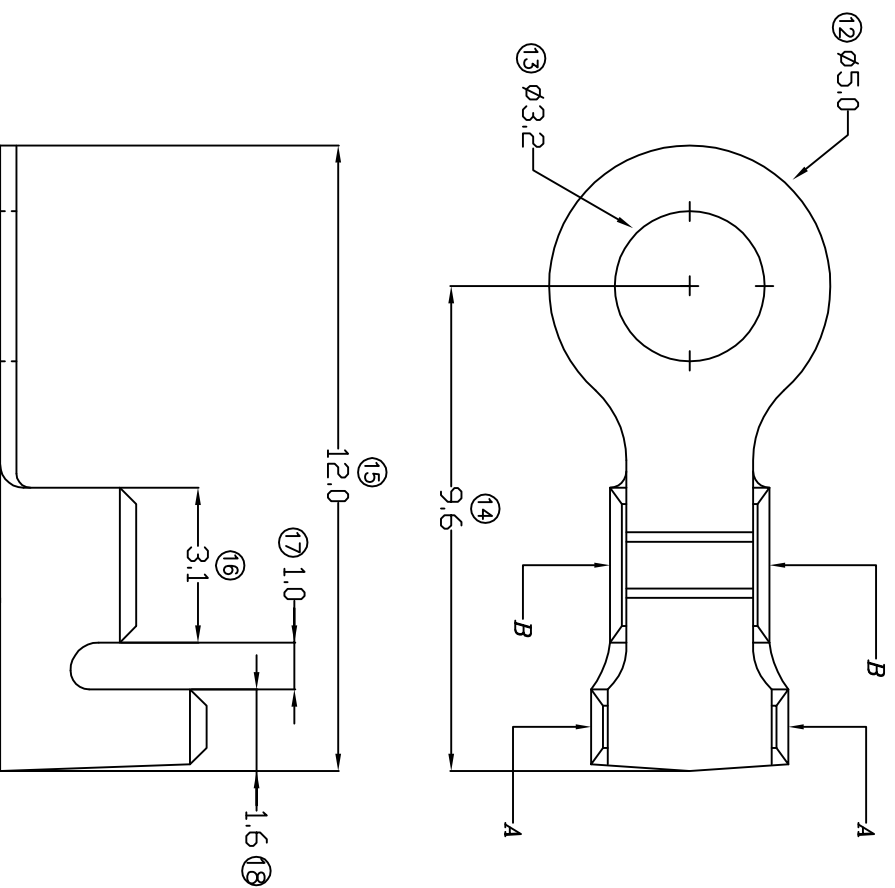


TERMINALS SPECIFICATION DRAWING



FOR REFERENCE ONLY

- 7) CRIMPING WIRE TENSILE FORCE IS BASE ON COPPER BREAK OFF INTENSITY.
- 6) TEMPERATURE RANGE -40°C TO +120°C.
- 5) VDL TAGE-MAX [VDLTS1] PER WIRE SPECIFICATION.
- 4) THICKNESS PLATING MORE THAN 40μ INCH.
- 3) PACKING QTY : 10000 PCS/REEL.
- 2) WIRE INSULATION (O.D) : 2.6MM.
- 1) APPLICABLE WIRE RANGE : 1.18-0.60MM².

SPECIFICATION :

MATERIAL: 10.40 BRASS		TIN PLATING	
C2680		NONE	
DIMENSIONS : MM		TREATMENT SELECTIVE	
TOLERANCE UNLESS OTHERWISE SPECIFIED:		PART NUMBER	
X:XXX	+/-0.05	EPI Terminals & Connectors Elamp Precision Industry(M) Sdn.Bhd.	
X:XX	+/-0.10		
X:X	+/-0.20		
X	+/-0.50		
EFFECTIVE DATE : 11/7/07		PART NAME: RING TONGUE TERMINALS	
REVISION: 04		APPLICABLE (1) TERMINALS (2) HOUSING	
SHEET OF : 1 / 1		DRAWING NO: A1261	