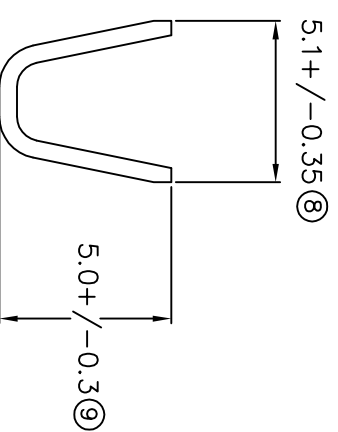
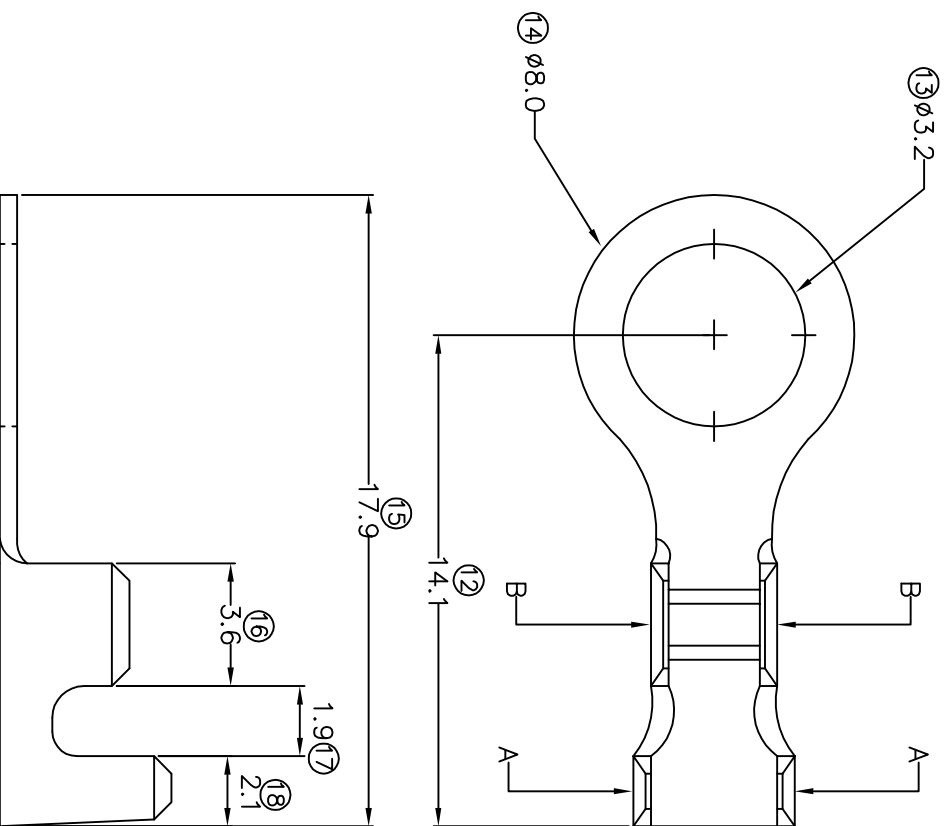
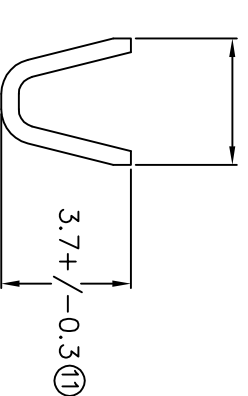


# TERMINALS SPECIFICATION DRAWING



3.8 +/- 0.35 (10)



SECTION B-B

**FOR REFERENCE ONLY**

- 7) CRIMPING WIRE TENSILE FORCE IS BASE ON COPPER BREAK OFF INTENSITY.
- 6) TEMPERATURE RANGE -40°C TD +120°C.
- 5) VDLTAGE-MAX [VDLTS] PER WIRE SPECIFICATION.
- 4) THICKNESS PLATING MORE THAN 40µ INCH.
- 3) PACKING QTY : 7000 PCS/REEL.
- 2) WIRE INSULATION (O.D) : 2.8MM.
- 1) APPLICABLE WIRE RANGE : 1.58-0.81MM<sup>2</sup>.

**SPECIFICATION :**

MATERIAL:	10.50 BRASS C2680	TIN PLATING	14832-2
DIMENSIONS : MM		TREATMENT SELECTIVE	14832-1 PART NUMBER
TOLERANCE UNLESS OTHERWISE SPECIFIED:		DWN: KS YEW	
X.XXX +/-0.05		CHK: SC CHOO	
X.XX +/-0.10		APVD: CHUANG	
X.X +/-0.20		SCALE : FREE	
X +/-0.30		DRAWING NO:	
EFFECTIVE DATE : 11/7/07		A1354	
REVISION:	03	<b>EPI</b> Terminals & Connectors Elamp Precision Industry(M) Sdn.Bhd.	
SHEET OF :	1 / 1	PART NAME:	RING TONGUE TERMINALS
		APPLICABLE (1) TERMINALS (2) HOUSING	(1) _____ (2) _____