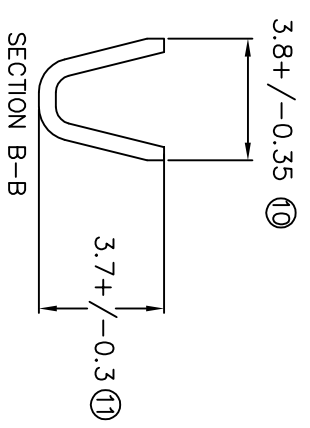
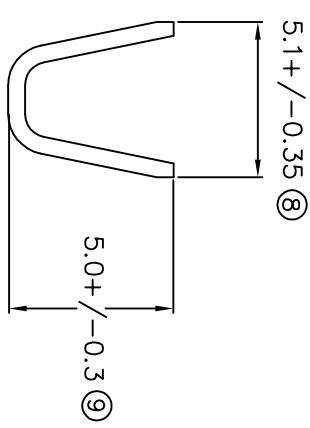
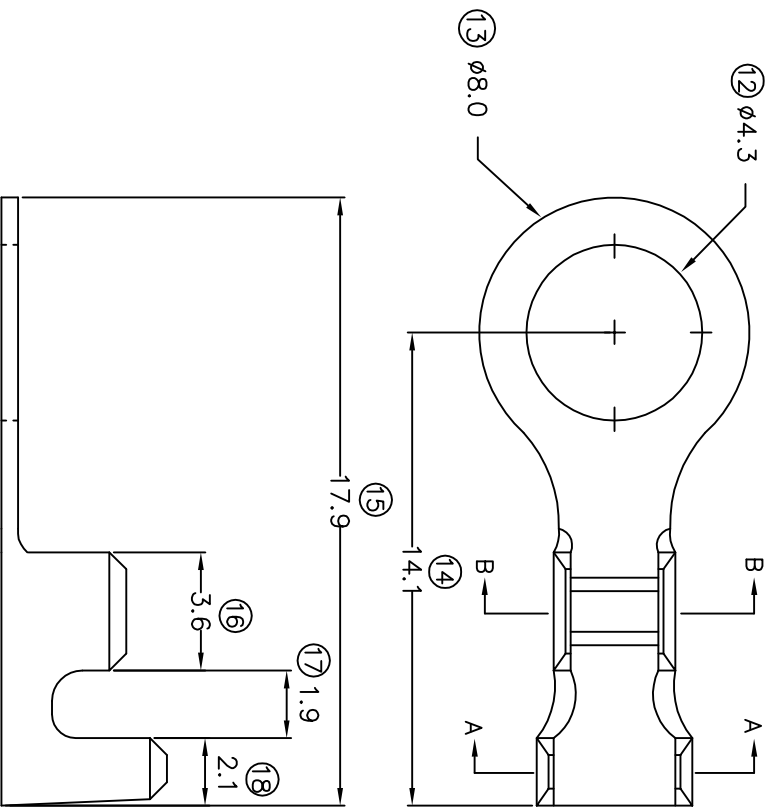


TERMINALS SPECIFICATION DRAWING



FOR REFERENCE ONLY

- 7) CRIMPING WIRE TENSILE FORCE IS BASE ON COPPER BREAK OFF INTENSITY.
- 6) TEMPERATURE RANGE -40°C TD +120°C.
- 5) VOLTAGE-MAX [VOLTAGE] PER WIRE SPECIFICATION.
- 4) THICKNESS PLATING MORE THAN 40 μ INCH.
- 3) PACKING QTY : 7000 PCS/REEL.
- 2) WIRE INSULATION (O.D) : 2.8MM.
- 1) APPLICABLE WIRE RANGE : 1.55-0.79MM².

SPECIFICATION :

MATERIAL: 10.50 BRASS C2680	TIN PLATING		
DIMENSIONS : MM	DWN: KS YEW		14843-2
TOLERANCE UNLESS OTHERWISE SPECIFIED:	CHK: SC CHOO	TREATMENT SELECTIVE	14843-1
X:XXX +/-0.05	APVD: YIL		PART NUMBER
X:XX +/-0.10	SCALE : FREE		
X:XX +/-0.20	DRAWING NO:	PART NAME:	
X +/-0.50	A1306	RING TONGUE TERMINALS	
EFFECTIVE DATE : 4/5/07		APPLICABLE (1) TERMINALS (2) HOUSING	
SHEET OF : 1 / 1		(1) -	
		(2) -	

EPI Terminals & Connectors
Eiamp Precision Industry(M) Sdn.Bhd.