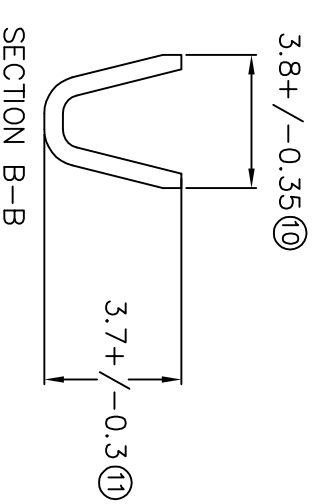
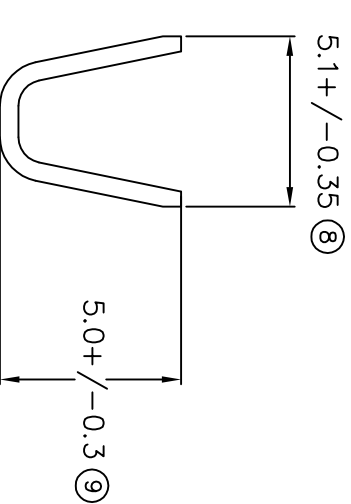
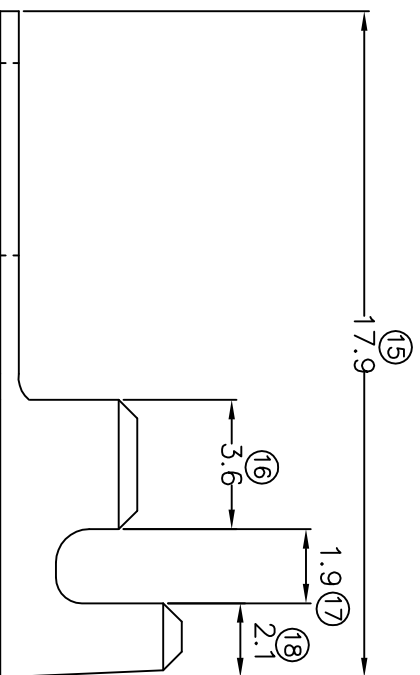
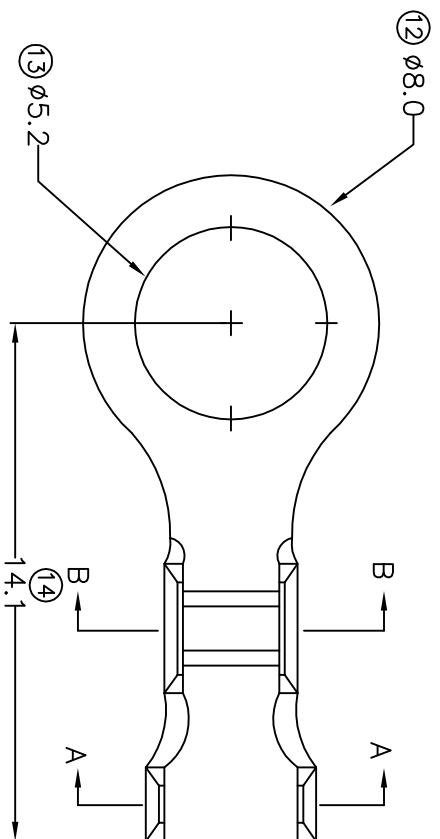


TERMINALS SPECIFICATION DRAWING



FOR REFERENCE ONLY

- 7) CRIMPING WIRE TENSILE FORCE IS BASE ON COPPER BREAK OFF INTENSITY.
- 8) TEMPERATURE RANGE -40°C TD +120°C.
- 9) VOLTAGE-MAX [VOLT] PER WIRE SPECIFICATION.
- 10) THICKNESS PLATING MORE THAN 40µ INCH.
- 11) PACKING QTY : 7000 PCS/REEL.
- 12) WIRE INSULATION (O.D) : 2.8MM.
- 13) APPLICABLE WIRE RANGE : 1.57-0.80MM².

SPECIFICATION :

MATERIAL: t0.50 BRASS C2680		TIN PLATING 14852-2	
DIMENSIONS : MM		TREATMENT SELECTIVE	
TOLERANCE UNLESS OTHERWISE SPECIFIED:		NONE	
X.XXX +/-0.05 X.XX +/-0.10 X.X +/-0.20 X +/-0.50	DWN: KS YEW CHK: SC CHOO APVD: YIL CHUANG	SCALE : FREE DRAWING NO:	PART NUMBER 14852-1
REVISION: 04		PART NAME: RING TONGUE TERMINALS	
SHEET OF : 1 / 1		APPLICABLE (1) TERMINALS (2) HOUSING	
EFFECTIVE DATE : 11/7/07		EPI Terminals & Connectors Elamp Precision Industry(M) Sdn.Bhd.	
1) APPLICABLE WIRE RANGE : 1.57-0.80MM ² .		(1) _____ (2) _____	