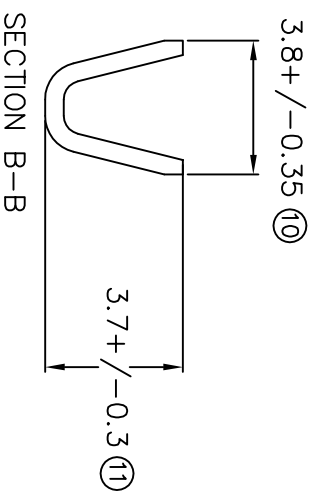
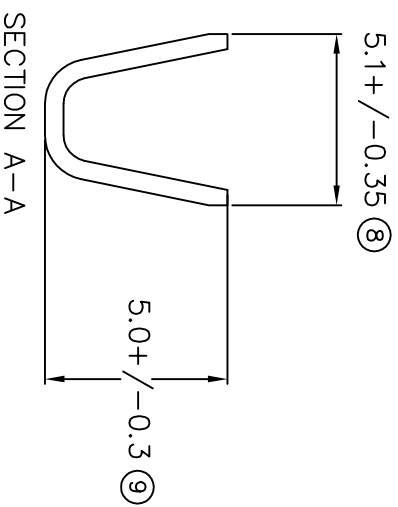
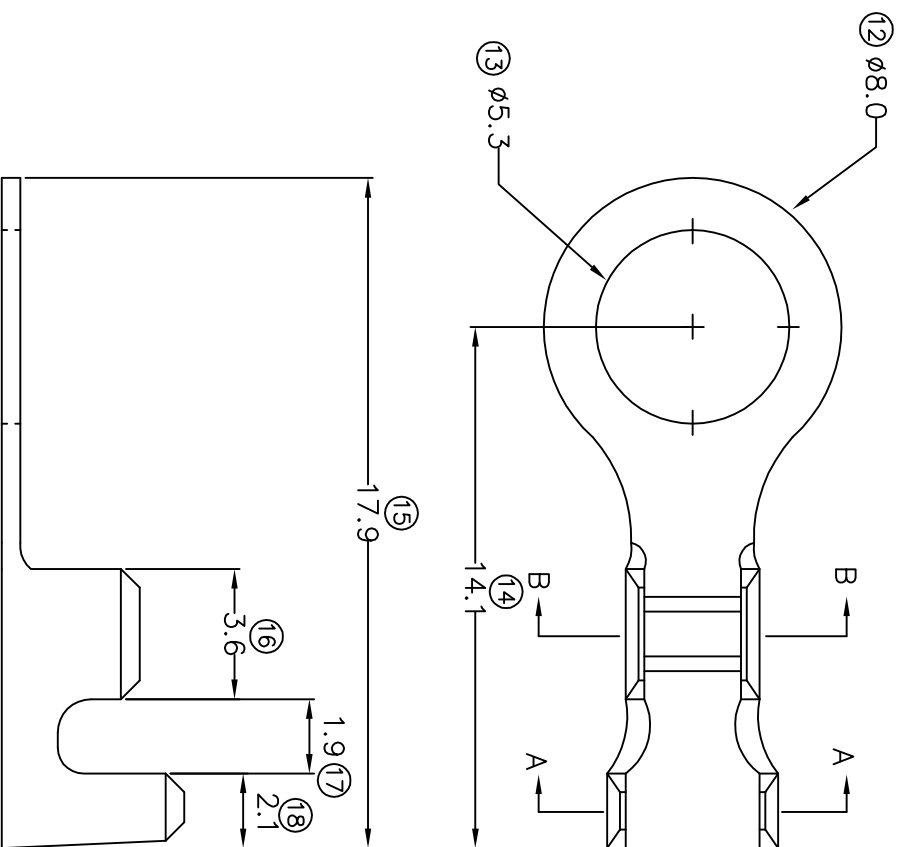


TERMINALS SPECIFICATION DRAWING



FOR REFERENCE ONLY

- 7) CRIMPING WIRE TENSILE FORCE IS BASE ON COPPER BREAK OFF INTENSITY.
- 6) TEMPERATURE RANGE -40°C TO +120°C.
- 5) VOLTAGE-MAX [VOLT] PER WIRE SPECIFICATION.
- 4) THICKNESS PLATING MORE THAN 40μ INCH.
- 3) PACKING QTY : 7000 PCS/REEL.
- 2) WIRE INSULATION (O.D) : 2.8MM.
- 1) APPLICABLE WIRE RANGE : 1.57-0.80MM².

SPECIFICATION :

MATERIAL: 10.50 BRASS C2680		TIN PLATING NONE	
DIMENSIONS : MM		DWN: KS YEW	
TOLERANCE UNLESS OTHERWISE SPECIFIED: X.XXX +/-0.05 X.XX +/-0.10 X.X +/-0.20 X +/-0.50		CHK: SC CHOO APVD: CHUANG SCALE : FREE DRAWING NO: A1475	
EFFECTIVE DATE : 11/7/07		EPI Terminals & Connectors Elamp Precision Industry(M) Sdn.Bhd.	
SHEET OF : 1 / 1		PART NAME: RING TONGUE TERMINALS APPLICABLE (1) TERMINALS (2) HOUSING (1) _____ (2) _____	
		14853-2 14853-1 PART NUMBER	