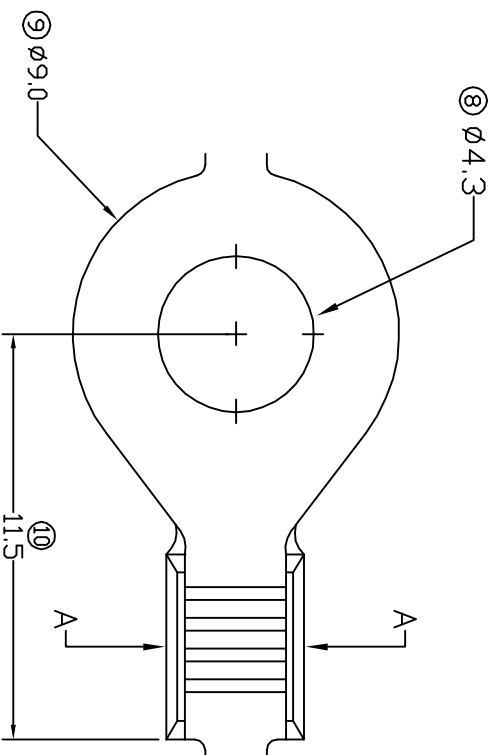
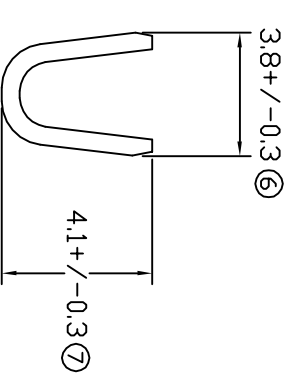
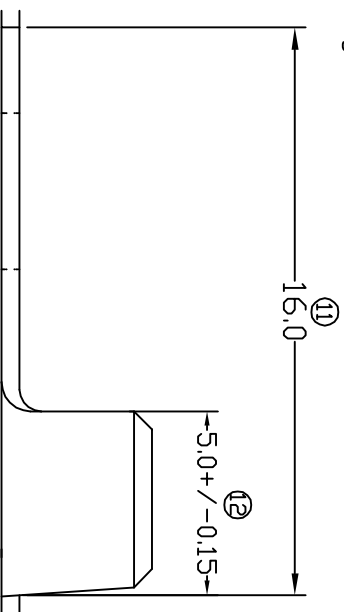


# TERMINALS SPECIFICATION DRAWING

UNCONTROLLED COPY



(Length does not include knock off tabs.)



- 5) CRIMPING WIRE TENSILE FORCE IS BASE ON COPPER BREAK OFF INTENSITY.
- 4) TEMPERATURE RANGE -40°C TO +120°C.
- 3) VOLTAGE-MAX [VOLTS] PER WIRE SPECIFICATION.
- 2) THICKNESS PLATING MORE THAN 40µ INCH.
- 1) PACKING QTY : 7000 PCS/REEL.

SPECIFICATION :

**FOR REFERENCE ONLY**

REVISION: 05



SHEET OF : 1 / 1

AMENDMENT

REV.	DATE	SPECIFICATION: 1 & 2 DELETED
05	11/8/08	

AMENDMENT

MATERIAL: t0.50 BRASS C2680		TIN PLATING		14943-2
DIMENSIONS : MM		TREATMENT SELECTIVE		PART NUMBER
TOLERANCE UNLESS OTHERWISE SPECIFIED:		DWN: KS YEW	EPI Terminals & Connectors	
X.XXX	+/-0.05	CHK: C.Y	Elamp Precision Industry(M) Sdn.Bhd.	
X.XX	+/-0.10	APVD: Y.L	PART NAME:	
X.X	+/-0.20	CHUANG	RING TONGUE TERMINALS	
X	+/-0.50	SCALE : FREE	APPLICABLE (1) TERMINALS (2) HOUSING	
EFFECTIVE DATE : 11/8/08	DRAWING NO: A1370	(1) -		
		(2) -		