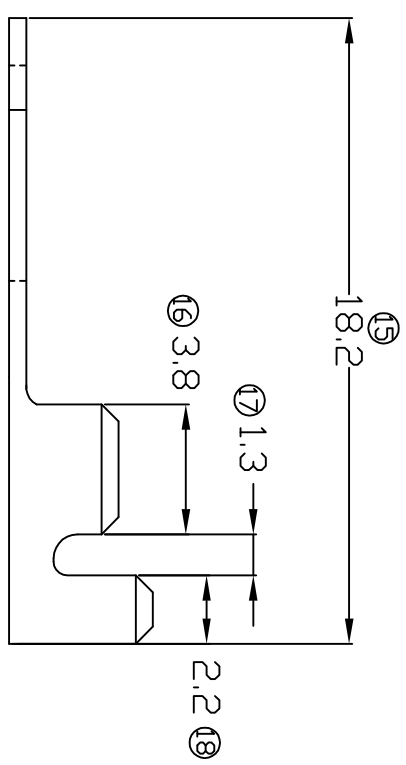
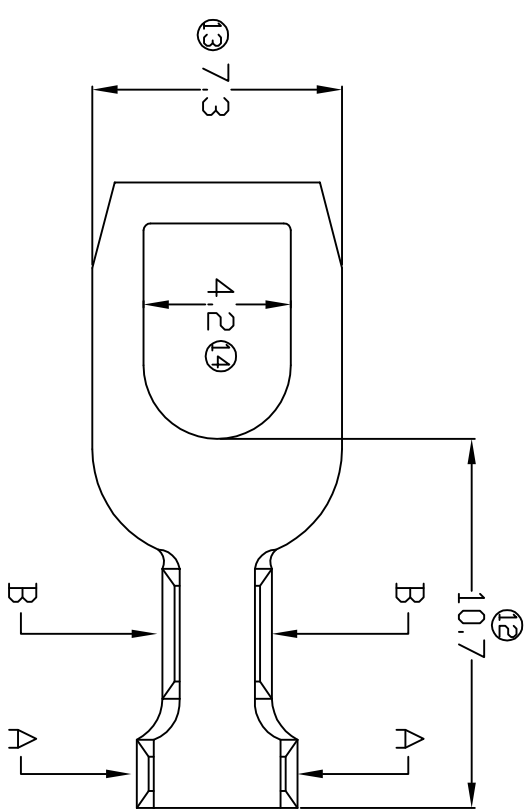


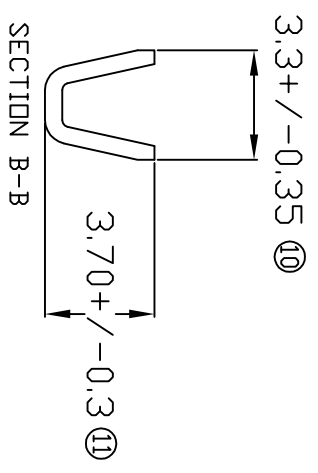
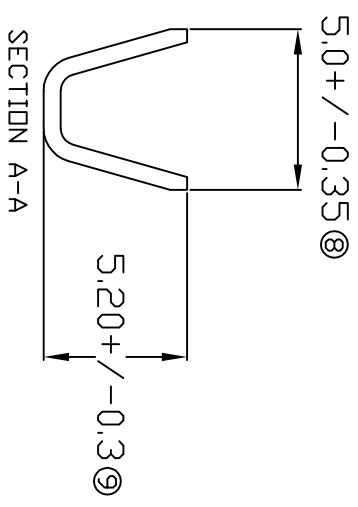
TERMINALS SPECIFICATION DRAWING



FOR REFERENCE ONLY

- 7) CRIMPING WIRE TENSILE FORCE IS BASE ON COPPER BREAK OFF INTENSITY.
- 6) TEMPERATURE RANGE -40°C TO +120°C.
- 5) VOLTAGE-MAX (VOLTS) PER WIRE SPECIFICATION
- 4) THICKNESS PLATING MORE THAN 40μ INCH.
- 3) PACKING QTY : 6000 PCS/REEL.
- 2) WIRE INSULATION (IDD) : 3.0MM.
- 1) APPLICABLE WIRE RANGE : 1.46-0.74MM².

SPECIFICATION :



MATERIAL: t0.50 BRASS C2680	TIN PLATING NONE	157343H-2	157343H-1
DIMENSIONS : MM	TREATMENT SELECTIVE	PART NUMBER	
TOLERANCE UNLESS OTHERWISE SPECIFIED:	DWN: KS YE'W	Part Name: EPI Terminals & Connectors Elamp Precision Industry(M) Sdn.Bhd.	
X.XXX +/-0.05	CHK: SC CHOO	SPADE TERMINALS	
X.XX +/-0.10	APVD: CHUANG	APPLICABLE (1) TERMINALS (2) HOUSING	
X.X +/-0.20	SCALE : FREE	(1) -	
X +/-0.50	DRAWING NO:	(2) -	
EFFECTIVE DATE : 31/5/07	A1373		

REVISION:
02

SHEET OF :
1 / 1