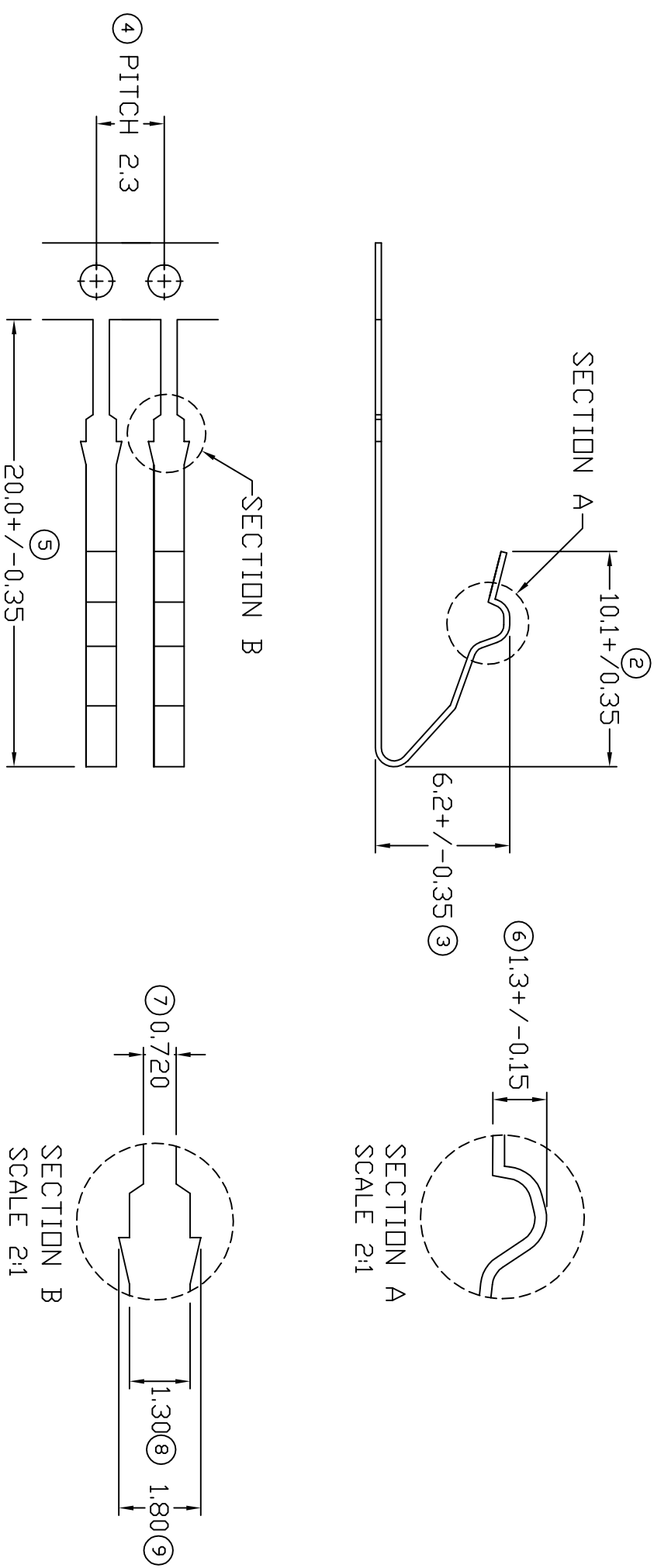


# TERMINALS SPECIFICATION DRAWING



**FOR REFERENCE ONLY**

1) PACKING QTY : 2000 PCS/BAG.

SPECIFICATION :

<b>REVISION:</b> 00	<b>MATERIAL:</b> t0.25 PHOSPHOR BRONZE C5191	<b>TREATMENT SELECTIVE</b>	<b>PART NUMBER</b> 16005A-1
<b>REVISION:</b> 00	<b>DIMENSIONS : MM</b>	<b>DWN: KS YE'W</b>	<b>PART NAME:</b> Terminals & Connectors
<b>OTHERWISE SPECIFIED:</b>	<b>TOLERANCE UNLESS OTHERWISE SPECIFIED:</b>	<b>CHK: HY LIM</b>	<b>Elamp Precision Industry(M) Sdn.Bhd.</b>
X.XXX $\pm$ / -0.05	X.XXX $\pm$ / -0.10	<b>APVD: CHUANG</b>	<b>SPRING CONTACTS TERMINALS</b>
X.XX $\pm$ / -0.20	X.X $\pm$ / -0.50	<b>SCALE : FREE</b>	<b>APPLICABLE (1) TERMINALS (2) HOUSING</b>
X $\pm$ / -0.50		<b>DRAWING NO:</b> A1511	(1) - (2) -
<b>SHEET OF :</b> 1 / 1	<b>EFFECTIVE DATE :</b> 19/9/07		