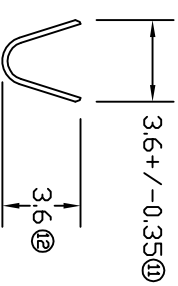
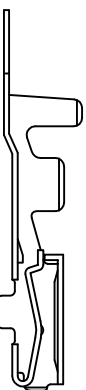
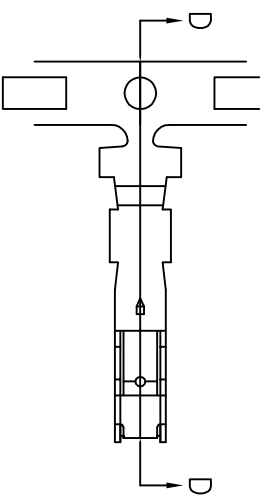
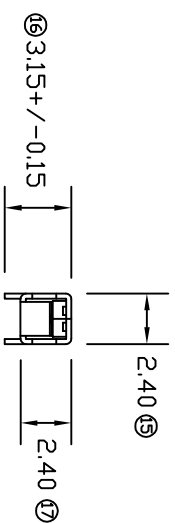
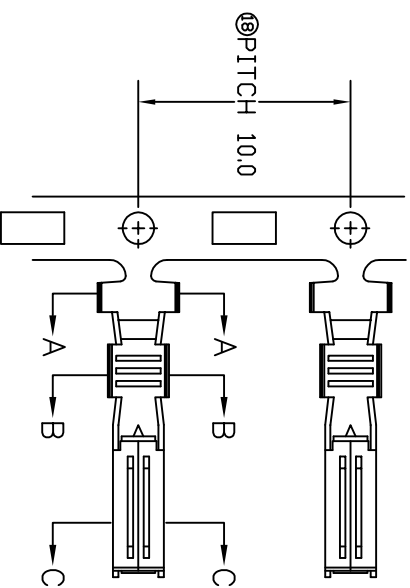


# TERMINALS SPECIFICATION DRAWING

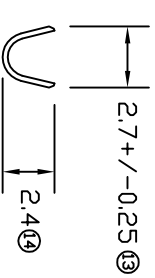


SECTION D-D

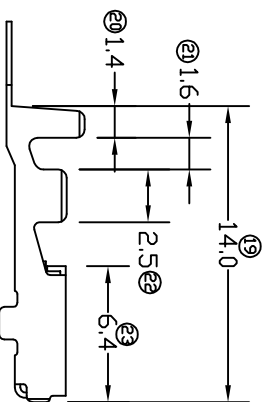
SECTION A-A



SECTION C-C



SECTION B-B



FOR REFERENCE ONLY

- 10) CRIMPING WIRE TENSILE FORCE IS BASE ON COPPER BREAK OFF INTENSITY.
- 9) TEMPERATURE RANGE -40°C TD +120°C.
- 8) VOLTAGE-MAX (VOLTS) PER WIRE SPECIFICATION.
- 7) MATCHING WITH TAB t0.8 X W1.7
- 6) TENSILE FORCE : MIN 0.35KG.
- 5) INSERT FORCE : MAX 0.65KG.
- 4) THICKNESS PLATING MORE THAN 40μ INCH.
- 3) PACKING QTY : 5000 PCS/REEL.
- 2) WIRE INSULATION (O.D) : 2.1MM.
- 1) APPLICABLE WIRE RANGE : 0.57-0.25MM<sup>2</sup>.

SPECIFICATION :

MATERIAL: t0.25 PHOSPHOR BRONZE C5191		PRE-TIN PLATED 170602S-2T	
DIMENSIONS : MM		TREATMENT SELECTIVE	
TOLERANCE UNLESS OTHERWISE SPECIFIED: X.XXX +/-0.05 X.XX +/-0.10 X.X +/-0.20 X +/-0.50		PART NAME: 060 SERIES FEMALE TERMINALS	
EFFECTIVE DATE : 8/6/07		APPLICABLE (1) TERMINALS (2) HOUSING (1) TAB t0.8 X W1.7 (2) FV-JC-20F, FV-JC-10F	
REVISION: 04		CHK: SC CHOO Y.L APVD: CHUANG	
SHEET OF : 1 / 1		SCALE : FREE DRAWING NO: A1228	
DWN: KS YE W		PART NUMBER	