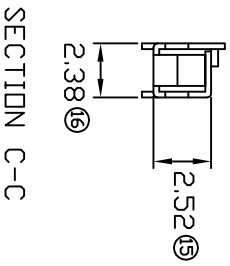
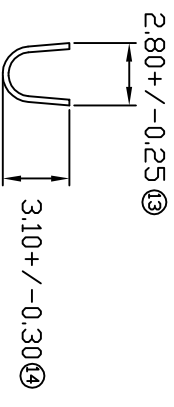
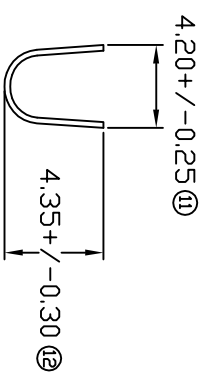
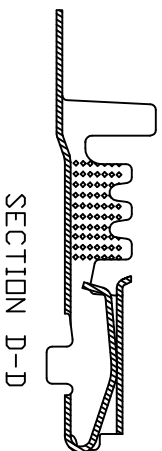
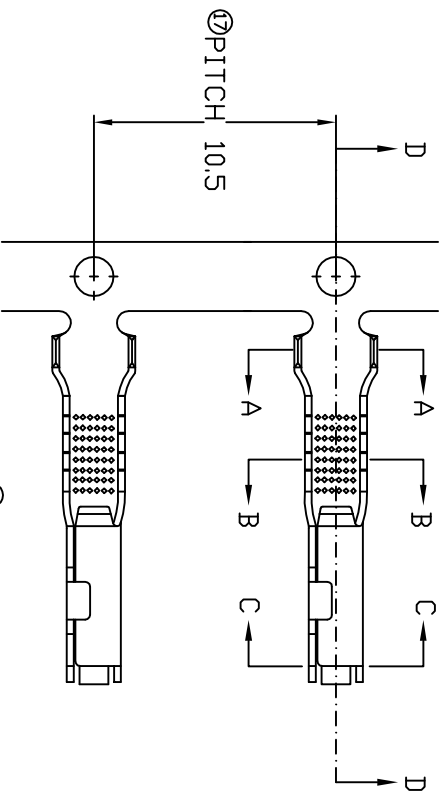
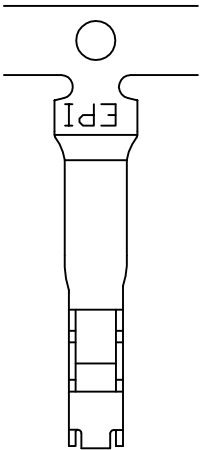


TERMINALS SPECIFICATION DRAWING



FOR REFERENCE ONLY

- 10) CRIMPING WIRE TENSILE FORCE IS BASE ON COPPER BREAK OFF INTENSITY.
- 9) TEMPERATURE RANGE -40°C TD +120°C.
- 8) VOLTAGE-MAX (VOLTS) PER WIRE SPECIFICATION.
- 7) MATCHING WITH TAB t0.8 X W1.5
- 6) TENSILE FORCE : MIN 0.4KG.
- 5) INSERT FORCE : MAX 2.0KG.
- 4) THICKNESS PLATING MORE THAN 40μ INCH.
- 3) PACKING QTY : 5000 PCS/REEL.
- 2) WIRE INSULATION (O.D) : 2.5MM.
- 1) APPLICABLE WIRE RANGE : 0.89-0.40MM².

SPECIFICATION :

MATERIAL: t0.25 BRASS C2680		PRE-TIN PLATED 17061PM-2T	
DIMENSIONS : MM		TREATMENT SELECTIVE	
TOLERANCE UNLESS OTHERWISE SPECIFIED: X.XXX +/-0.05 X.XX +/-0.10 X.X +/-0.20 X +/-0.50		PART NUMBER	
DWN: KS YE W CHK: SC CHOO APVD: CHUANG Y.L		PART NAME: 060 SERIES FEMALE TERMINALS	
EFFECTIVE DATE : 8/6/07		APPLICABLE (1) TERMINALS (2) HOUSING (1) TAB t0.8 X W1.5 (2) -	
SHEET OF : 1 / 1		DRAWING NO: A1456	
REVISION: 01		SCALE : FREE	