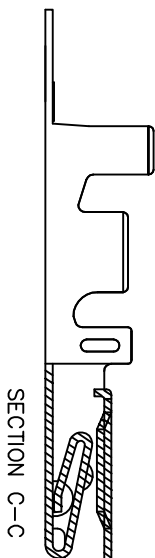
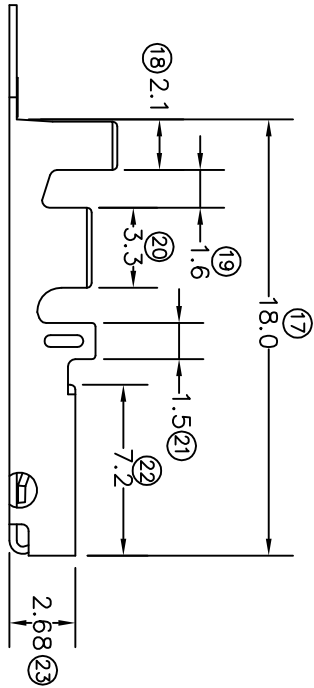
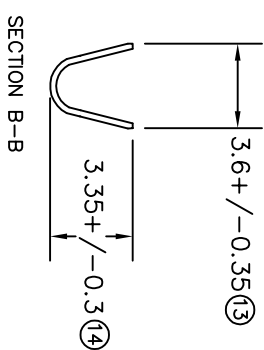
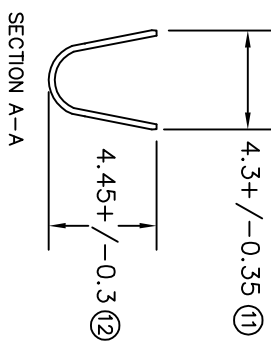
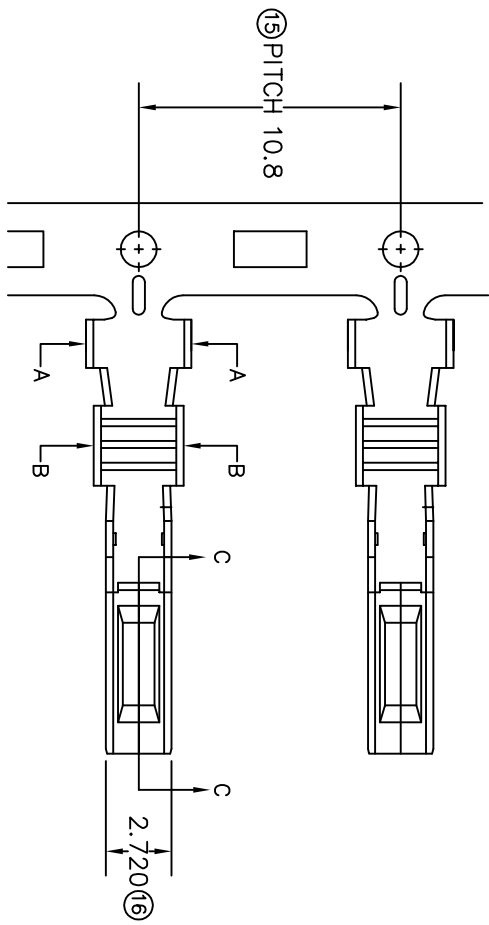


TERMINALS SPECIFICATION DRAWING



FOR REFERENCE ONLY

- 10) CRIMPING WIRE TENSILE FORCE IS BASE ON COPPER BREAK OFF INTENSITY.
- 9) TEMPERATURE RANGE -40°C TO +120°C.
- 8) VOLTAGE-MAX [VOLTS] PER WIRE SPECIFICATION.
- 7) MATCHING WITH TAB to.6 X W1.8.
- 6) TENSILE FORCE : MIN 0.35KG.
- 5) INSERT FORCE : MAX 0.7KG.
- 4) THICKNESS PLATING MORE THAN 40m INCH.
- 3) PACKING QTY : 5000 PCS/REEL.
- 2) WIRE INSULATION (O.D) : 2.6MM.
- 1) APPLICABLE WIRE RANGE : 1.07-0.47MM².

SPECIFICATION :

MATERIAL: 10.25 PHOSPHOR BRONZE C5191		PRE-TIN PLATED TREATMENT SELECTIVE			170701KH-2T
DIMENSIONS : MM		DWN: KS YEW		EPJ Terminals & Connectors Elamp Precision Industry(M) Sdn.Bhd. PART NAME: 070 SERIES FEMALE TERMINALS APPLICABLE (1) TERMINALS (2) HOUSING (1) 270702M/H (2) 070 SERIES HOUSING	
TOLERANCE UNLESS OTHERWISE SPECIFIED:		CHK: SC CHOO			
X.XXX +/-0.05 X.XX +/-0.10 X.X +/-0.20 X +/-0.50		APVD: CHUANG SCALE : FREE DRAWING NO:			
EFFECTIVE DATE : 23/8/07		A1416			
REVISION 01		SHEET OF : 1 / 1			