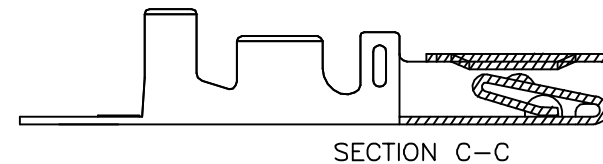
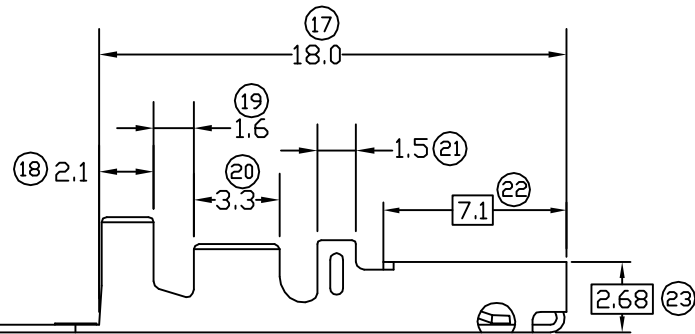
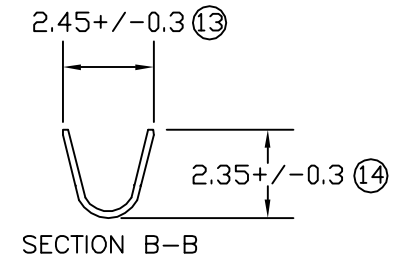
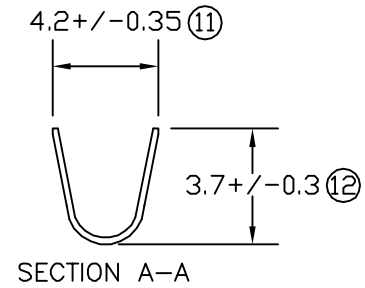
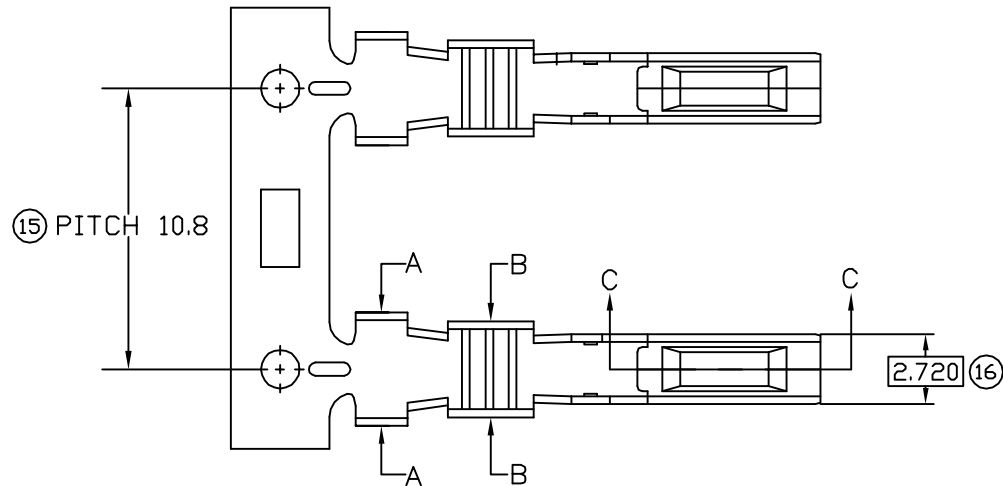


# TERMINALS SPECIFICATION DRAWING



☐ MATCHING DIMENSION

- 10) CRIMPING WIRE TENSILE FORCE IS BASE ON COPPER BREAK OFF INTENSITY.
- 9) TEMPERATURE RANGE -40°C TO +120°C.
- 8) VOLTAGE-MAX [VOLTS] PER WIRE SPECIFICATION.
- 7) MATCHING WITH TAB t0.60 X W1.80
- 6) TENSILE FORCE : MIN 0.35KG.
- 5) INSERT FORCE : MAX 0.70KG.
- 4) THICKNESS PLATING MORE THAN 40m INCH.
- 3) PACKING QTY : 5000 PCS/REEL.
- 2) WIRE INSULATION (O.D) : 2.2MM.
- 1) APPLICABLE WIRE RANGE : 0.51-0.23MM<sup>2</sup>.

**FOR REFERENCE ONLY**

SPECIFICATION :

REV.	DATE	AMENDMENT
05	3/5/10	② 7.2 CHANGE TO 7.1

REVISION: 05
SHEET OF : 1 / 1

MATERIAL: t0.25 PHOSPHOR BRONZE C5191	-	-
	PRE-TIN PLATED	170701KM-2T
	TREATMENT SELECTIVE	PART NUMBER
DIMENSIONS : MM  TOLERANCE UNLESS OTHERWISE SPECIFIED: X.XXX +/-0.05 X.XX +/-0.10 X.X +/-0.20 X +/-0.50	PREPARE BY: KS YEW  REVIEWED BY: CH ANG  APPROVED BY: YL CHUANG  SCALE : FREE  DRAWING NO: A1415	<div style="text-align: center;">                  Terminals &amp; Connectors                  Elamp Precision Industry(M) Sdn.Bhd.             </div> PART NAME: 070 SERIES FEMALE TERMINALS  APPLICABLE (1) TERMINALS (2) HOUSING (1) 270702M/H (2) 070 SERIES HOUSING
EFFECTIVE DATE : 3/5/10		