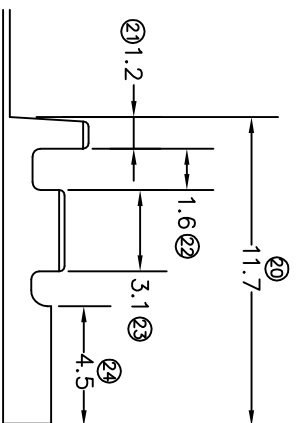
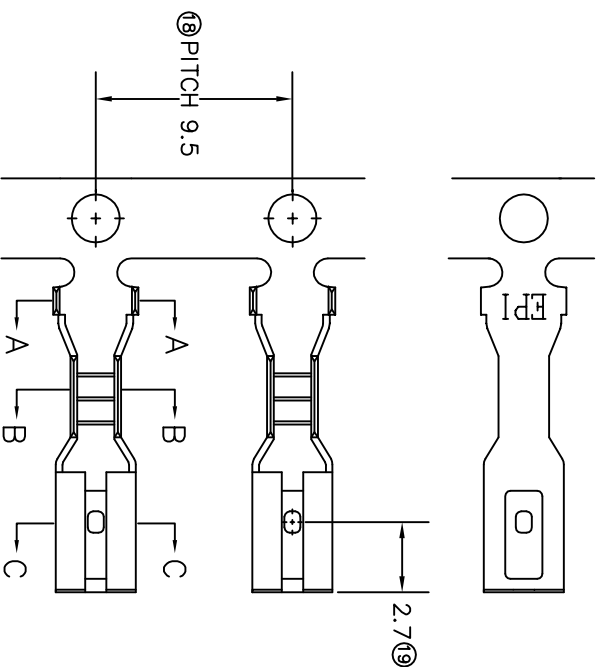
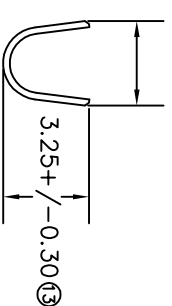


TERMINALS SPECIFICATION DRAWING

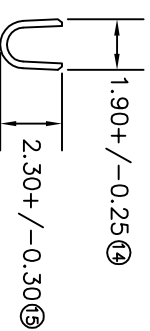


3.25+/-0.30 (12)



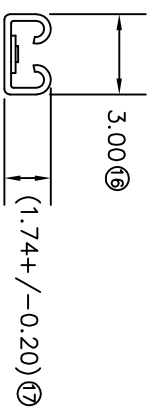
SECTION A-A

1.90+/-0.25 (14)



SECTION B-B

3.00 (16)



SECTION C-C

FOR REFERENCE ONLY

- 11) CRIMPING WIRE TENSILE FORCE IS BASE ON COPPER BREAK OFF INTENSITY.
- 10) TEMPERATURE RANGE -40°C TO +120°C.
- 9) VOL TAGE-MAX (VOLT)SI PER WIRE SPECIFICATION.
- 8) FOR REFERENCE ONLY.
- 7) MATCHING WITH TAB ±0.5 X W2.0.
- 6) TENSILE FORCE : MIN 1.30KG (WITH EPI JIG).
- 5) INSERT FORCE : MAX 1.30KG (WITH EPI JIG).
- 4) THICKNESS PLATING MORE THAN 40µ INCH.
- 3) PACKING QTY : 6000 PCS/REEL.
- 2) WIRE INSULATION (O.D) : 2.0MM.
- 1) APPLICABLE WIRE RANGE : 0.44-0.20MM².

SPECIFICATION :

| | | | | |
|---|-----------------------------|---|--|--|
| MATERIAL: 10.25 BRASS C2680 | DIMENSIONS : MM | DWN: KS YEW | PRE-TIN PLATED | 170902-2T |
| TOLERANCE UNLESS OTHERWISE SPECIFIED: X.XXX +/-0.05 X:XX +/-0.10 X.X +/-0.20 X +/-0.30 | OTHERWISE SPECIFIED: | CHK: SC CHOO APVD: CHUANG | TREATMENT SELECTIVE | PART NUMBER |
| EFFECTIVE DATE : 17/7/07 | | APVD: Y1 SCALE : FREE DRAWING NO: A1464-1 | PART NAME: 090 SERIES FEMALE TERMINALS | APPLICABLE (1) TERMINALS (2) HOUSING (1) TAB ±0.5 X W2.0 (2) JU-3P, JU-4P |
| SHEET OF : 1 / 1 | | | REVISION: 01 | REVISION: 01 |

EPI Terminals & Connectors
Elamp Precision Industry(M) Sdn.Bhd.