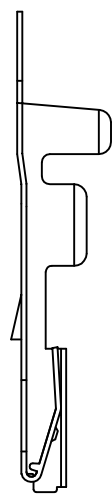
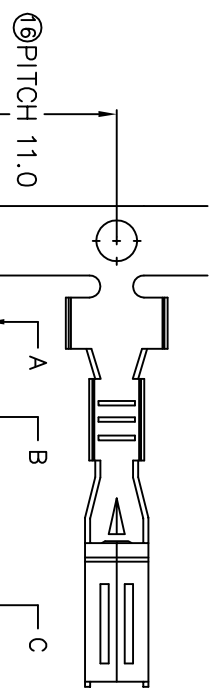
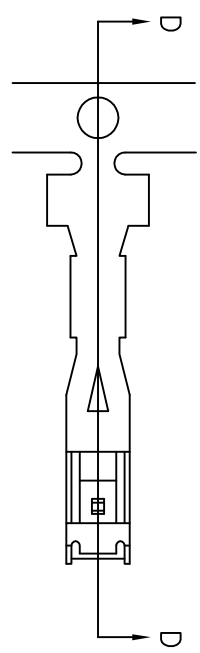
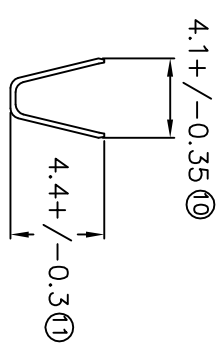


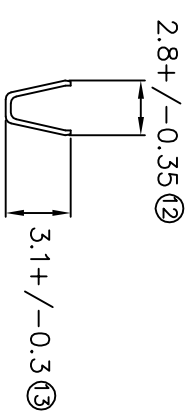
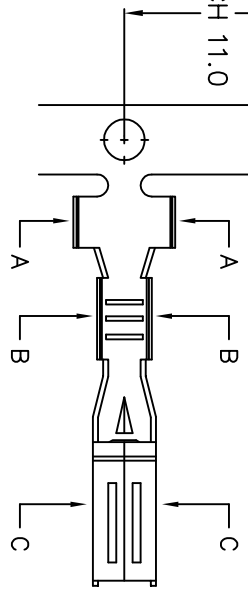
# TERMINALS SPECIFICATION DRAWING



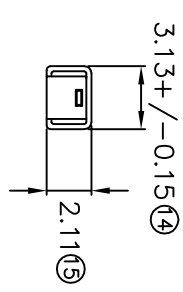
SECTION D-D



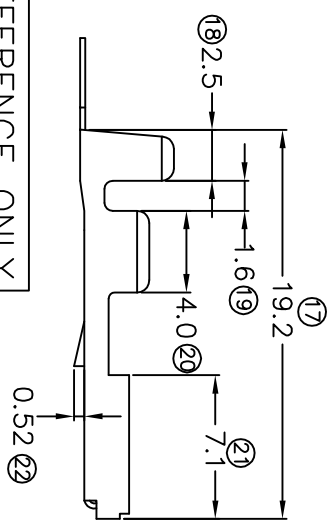
SECTION A-A



SECTION B-B



SECTION C-C



FOR REFERENCE ONLY

- 9) CRIMPING WIRE TENSILE FORCE IS BASE ON COPPER BREAK OFF INTENSITY.
- 8) TEMPERATURE RANGE -40°C TO +120°C.
- 7) VOLTAGE-MAX (VOLTS) PER WIRE SPECIFICATION.
- 6) TENSILE FORCE : MIN 0.20KG.
- 5) INSERT FORCE : MAX 0.50KG.
- 4) THICKNESS PLATING MORE THAN 40µ INCH.
- 3) PACKING QTY : 4000 PCS/REEL.
- 2) WIRE INSULATION (O.D) : 2.5MM.
- 1) APPLICABLE WIRE RANGE : 0.82-0.36MM<sup>2</sup>.

<b>MATERIAL:</b>	±0.25 BRASS	<b>PRE-TIN PLATED</b>	<b>170903M-2T</b>
	C2680	<b>TREATMENT SELECTIVE</b>	<b>PART NUMBER</b>
<b>DIMENSIONS :</b>	MM	<b>DWN: KS YE'W</b>	
<b>TOLERANCE UNLESS OTHERWISE SPECIFIED:</b>		<b>CHK: SC CH00</b>	
		<b>Y'L</b>	
		<b>APVD: CHUANG</b>	
		<b>SCALE : FREE</b>	
		<b>DRAWING NO:</b>	
		<b>A1216</b>	
<b>EFFECTIVE DATE :</b>	17/7/07		
<b>REVISION:</b>	04	<b>PART NAME:</b>	<b>EPI</b> Terminals & Connectors
			Elamp Precision Industry(M) Sdn.Bhd.
			090 SERIES FEMALE TERMINALS
			APPLICABLE (1) TERMINALS (2) HOUSING
			(1) TAB ±0.60 X W2.2
			(2) 090 SERIES HOUSING
<b>SHEET OF :</b>	1 / 1		

**SPECIFICATION :**