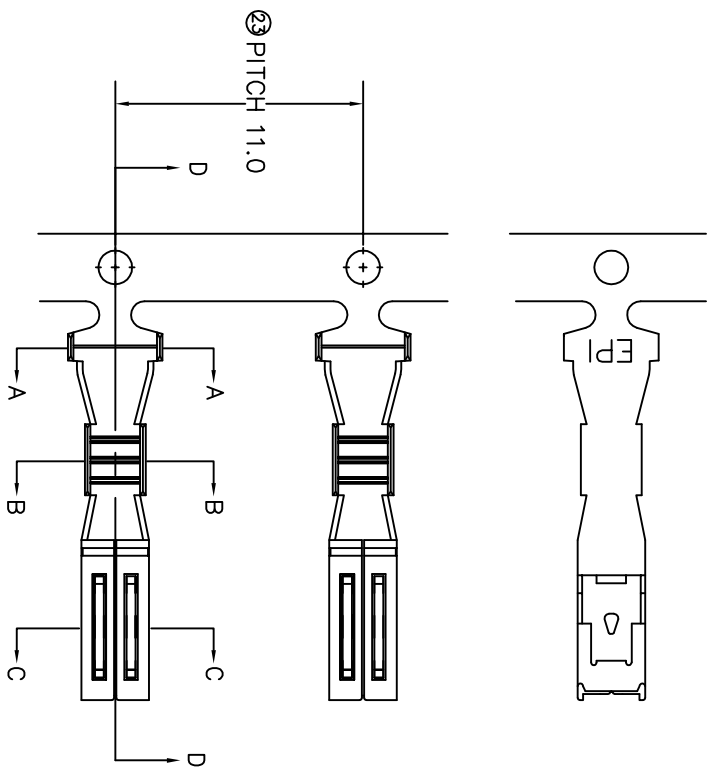
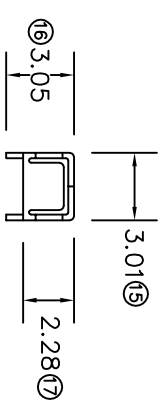
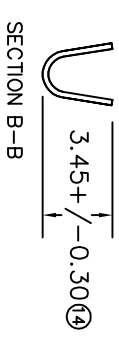
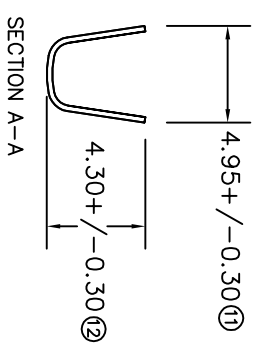
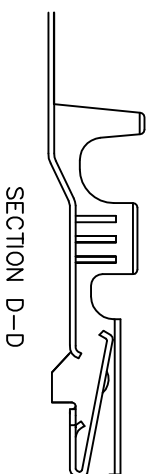
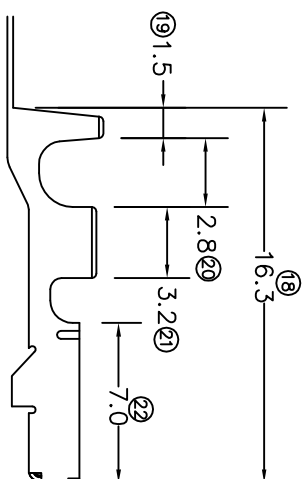


TERMINALS SPECIFICATION DRAWING



FOR REFERENCE ONLY

- 10) CRIMPING WIRE TENSILE FORCE IS BASE ON COPPER BREAK OFF INTENSITY.
- 9) TEMPERATURE RANGE -40°C TO +120°C.
- 8) VOLTAGE-MAX [VOLTS] PER WIRE SPECIFICATION.
- 7) MATCHING WITH TAB t0.6 X W2.2
- 6) TENSILE FORCE : MIN 0.20KG.
- 5) INSERT FORCE : MAX 0.65KG.
- 4) THICKNESS PLATING MORE THAN 40μ INCH.
- 3) PACKING QTY : 4000 PCS/REEL.
- 2) WIRE INSULATION (O.D) : 2.6MM.
- 1) APPLICABLE WIRE RANGE : 1.06-0.47MM².



MATERIAL: to.25 BRASS C2680		PRE-TIN PLATED TREATMENT SELECTIVE		170904H-2T PART NUMBER	
DIMENSIONS : MM		DWN: KS YEW		Terminols & Connectors Elamp Precision Industry(M) Sdn.Bhd. PART NAME: 090 SERIES FEMALE TERMINALS APPLICABLE (1) TERMINALS (2) HOUSING (1) 270904 (2) 090 FW-SERIES CONNECTORS	
TOLERANCE UNLESS OTHERWISE SPECIFIED:		CHK: SC CHOO			
X.XXX +/-0.05 X.XX +/-0.10 X.X +/-0.20 X +/-0.50		APVD: CHUANG			
REVISION: 01		SCALE : FREE DRAWING NO:			
SHEET OF : 1 / 1		EFFECTIVE DATE : 11/7/07		A1459	