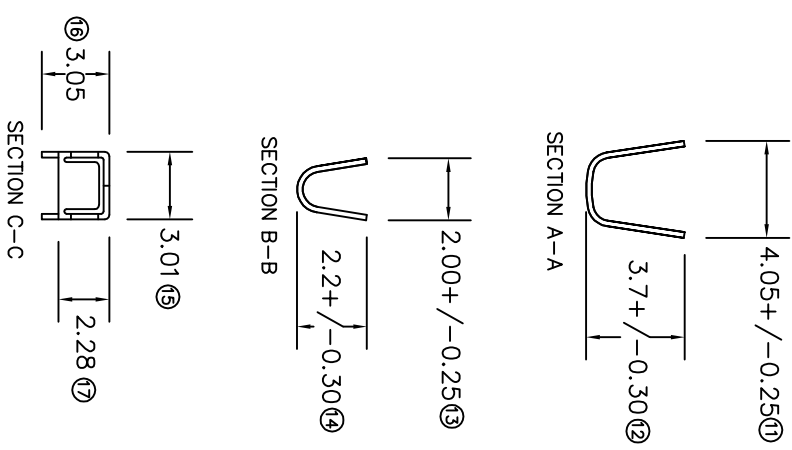
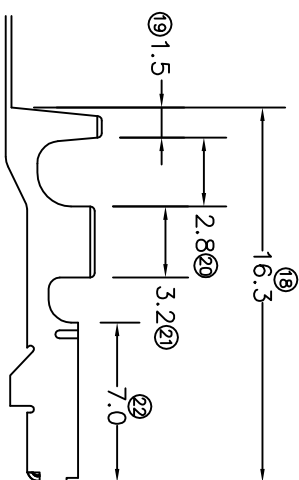
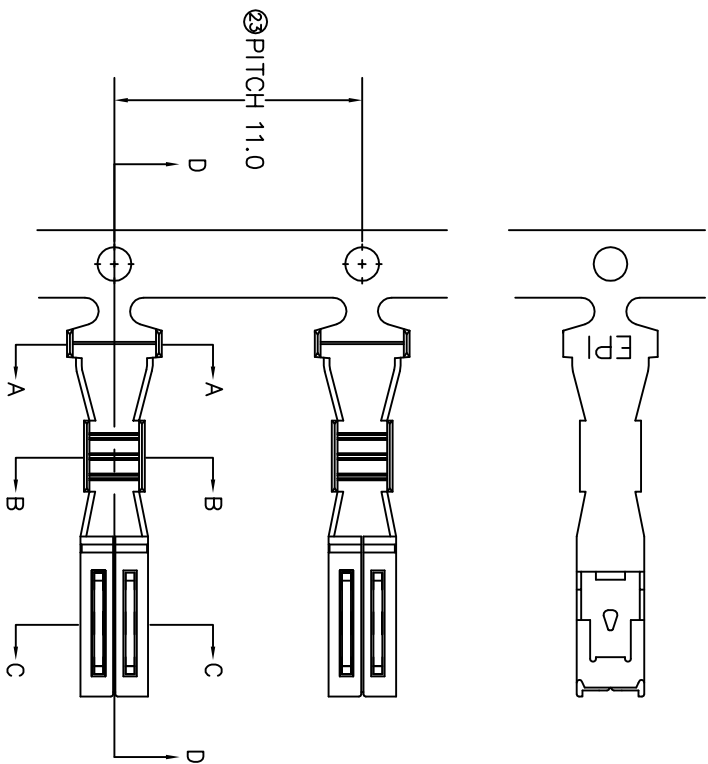


TERMINALS SPECIFICATION DRAWING



FOR REFERENCE ONLY

- 10) CRIMPING WIRE TENSILE FORCE IS BASE ON COPPER BREAK OFF INTENSITY.
- 9) TEMPERATURE RANGE -40°C TO +120°C.
- 8) VOLTAGE-MAX [VOLTS] PER WIRE SPECIFICATION.
- 7) MATCHING WITH TAB to.6 X W2.2.
- 6) TENSILE FORCE : MIN 0.20KG.
- 5) INSERT FORCE : MAX 0.65KG.
- 4) THICKNESS PLATING MORE THAN 40μ INCH.
- 3) PACKING QTY : 4500 PCS/REEL.
- 2) WIRE INSULATION (O.D) : 2.2MM.
- 1) APPLICABLE WIRE RANGE : 0.42-0.19MM².

MATERIAL:		to.25 BRASS	
C2680			
DIMENSIONS : MM		DWN: KS YEW	
TOLERANCE UNLESS OTHERWISE SPECIFIED:		CHK: SC CHOO	
X.XXX +/-0.05		Y.L	
X.XX +/-0.10		APVD: CHUANG	
X.X +/-0.20		SCALE : FREE	
X +/-0.50		DRAWING NO:	
EFFECTIVE DATE : 11/7/07		A1458	
PRE-TIN PLATED		170904S-2T	
TREATMENT SELECTIVE		PART NUMBER	
EPI Terminals & Connectors Elamp Precision Industry(M) Sdn.Bhd.		PART NAME: 090 SERIES FEMALE TERMINALS	
APPLICABLE (1) TERMINALS (2) HOUSING		(1) 270904	
(2) 090 FW-SERIES CONNECTORS		(2) 090 FW-SERIES CONNECTORS	

SPECIFICATION :

REVISION:	
01	
SHEET OF :	1 / 1