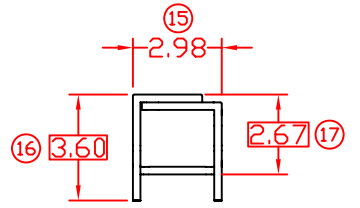
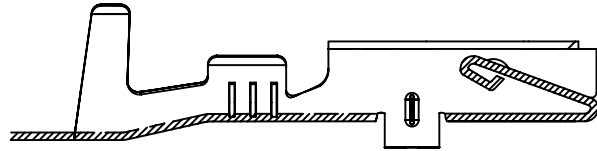
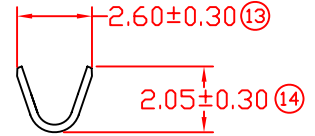
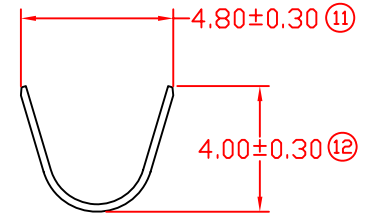
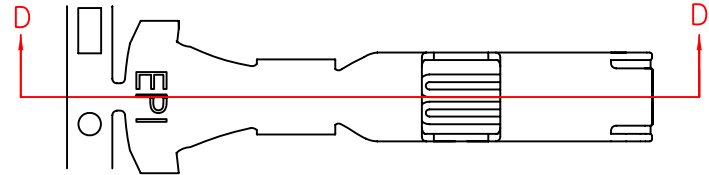
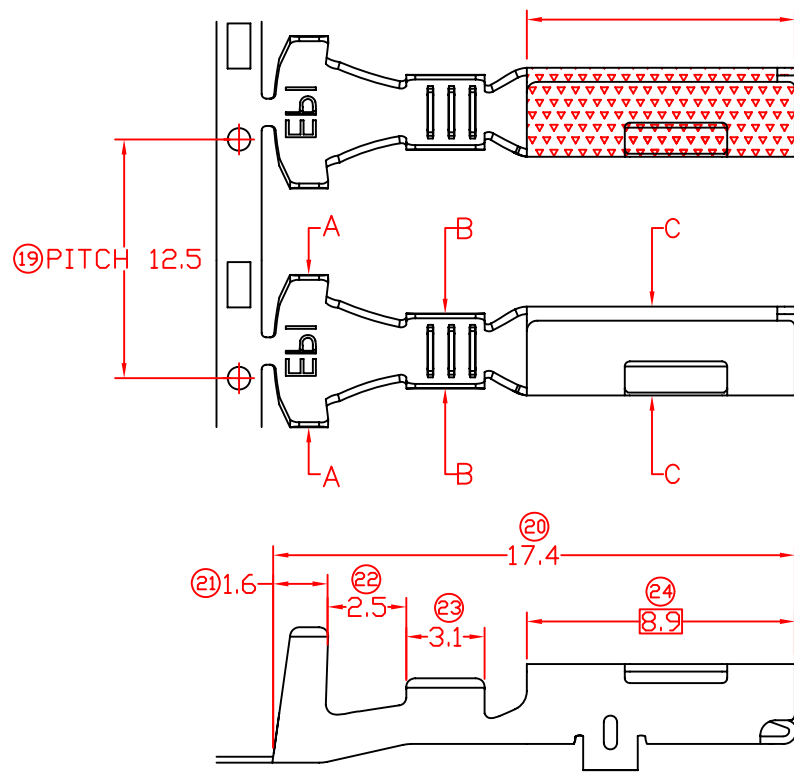


# TERMINALS SPECIFICATION DRAWING

UNCONTROLLED COPY



□ MATCHING DIMENSION

- 10) CRIMPING WIRE TENSILE FORCE IS BASE ON COPPER BREAK OFF INTENSITY.
- 9) TEMPERATURE RANGE -40°C TO +120°C.
- 8) VOLTAGE-MAX [VOLTS] PER WIRE SPECIFICATION.
- 7) MATCHING WITH TAB t0.6 X W2.2.
- 6) TENSILE FORCE : MIN 0.22KG.
- 5) INSERT FORCE : MAX 0.75KG.
- 4) THICKNESS PLATING MORE THAN 40μ INCH.
- 3) PACKING QTY : 5000 PCS/REEL.
- 2) WIRE INSULATION (O.D) : 2.5MM.
- 1) APPLICABLE WIRE RANGE : 0.42-0.19MM<sup>2</sup>.

**FOR REFERENCE ONLY**

MATERIAL: t0.25 PHOSPHOR BRONZE C5191	NICKEL & GOLD PLATING	170905KS-5
	PRE-TIN PLATED	170905KS-2T
	TREATMENT SELECTIVE	PART NUMBER
DIMENSIONS : MM	PREPARE BY: KS YEOW	Terminals & Connectors Elamp Precision Industry(M) Sdn.Bhd.
TOLERANCE UNLESS OTHERWISE SPECIFIED:	REVIEWED BY: CH ANG	
X.XXX +/-0.05 X.XX +/-0.10 X.X +/-0.20 X +/-0.50	APPROVED BY: CY CHUANG	PART NAME: 090 SERIES WATER PROOF FEMALE TERMINALS
	EFFECTIVE DATE : 9/8/10	SCALE : FREE
	DRAWING NO: A1514	

SPECIFICATION :

			REVISION: 01
01	9/8/10	UPDATE DRAWING	SHEET OF : 1 / 1
REV.	DATE	AMENDMENT	