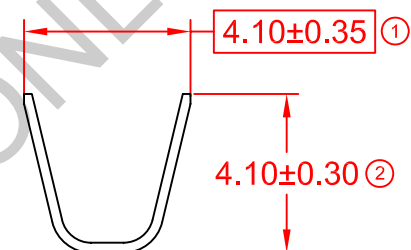
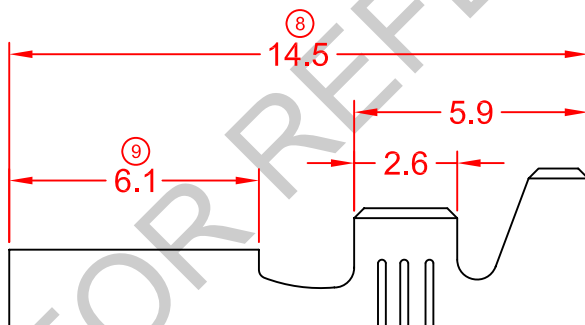
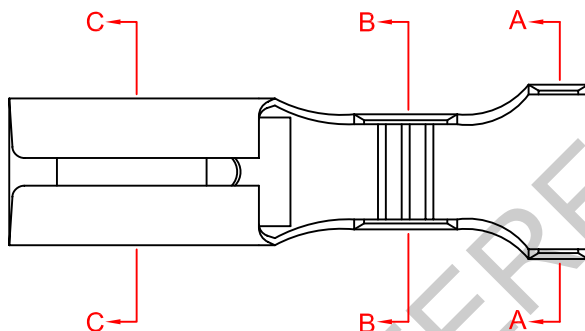
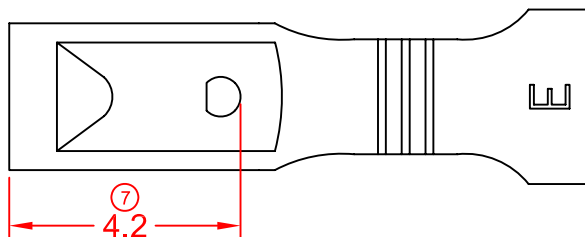
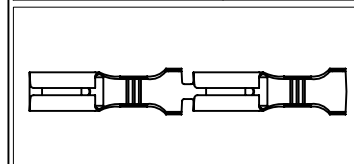


SPECIFICATION DRAWING

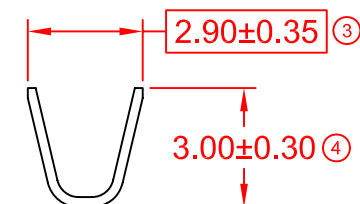
MASTER COPY

ITEM NO	MATERIAL	TREATMENT	QTY/REEL	REEL/CARTON	MATCHING PART(S)
17110BH(0.8)-1	t0.25 BRASS (C2680)	NONE	10000 PCS	4	TERMINAL-TAB t0.8 X W2.8
17110BH(0.8)-2	t0.25 BRASS (C2680)	TIN PLATING	10000 PCS	4	HOUSING-N/A

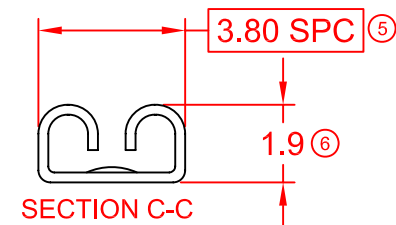
SYMBOL	DESCRIPTION
○	DIMENSION INSPECTED DURING SETUP AND OUTGOING.
□	DIMENSION INSPECTED HOURLY.
SPC	STATISTICALLY CONTROLLED DIMENSION.
△	JIG USED DURING INSPECTION.



SECTION A-A



SECTION B-B



SECTION C-C

REMARKS:

- a) PLATING THICKNESS MIN 40μ INCH
- b) SUGGESTED WIRE INSULATION (O.D): 2.5MM
- c) SUGGESTED WIRE RANGE: 0.77~0.34MM² (AWG16~20)
- d) INSERT FORCE: MAX 3.70KG
- e) TENSILE FORCE: MIN 3.00KG

GENERAL TOLERANCE UNLESS SPECIFIED:	X.XXX ±0.05	PREPARE BY: KS YEW	Elamp Precision Industry(M) Sdn.Bhd.
	X.XX ±0.10	REVIEWED BY: CH ANG	
	X.X ±0.20	APPROVED BY: CY CHUANG	ITEM NAME: 110 SERIES FEMALE TERMINAL
	X ±0.50		ITEM NO: 17110BH(0.8)-1, 2
		EFFECTIVE DATE: 31/1/12	DRAWING NO: EP-Q-244A
		SCALE : FREE	
		UNIT : MM	

REV.	DATE	AMENDMENT	ECR NO:	SHEET OF:	REVISION:
03	31/1/12	UPDATE TO NEW FORMAT	-	1 / 1	03