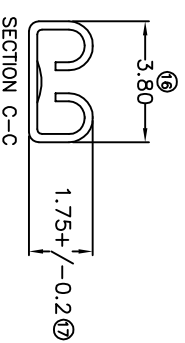
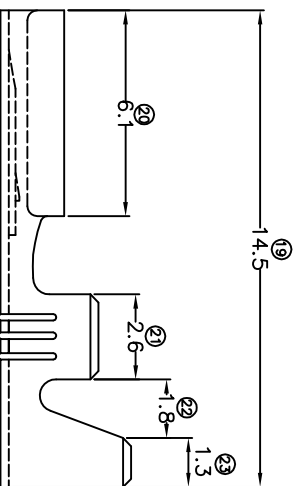
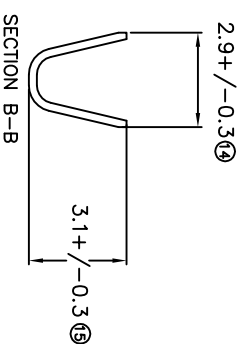
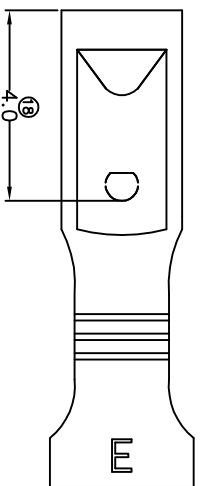
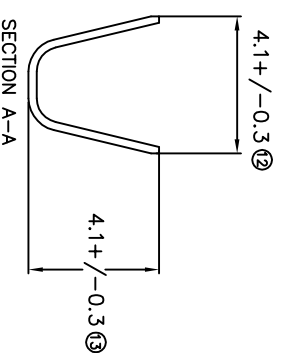
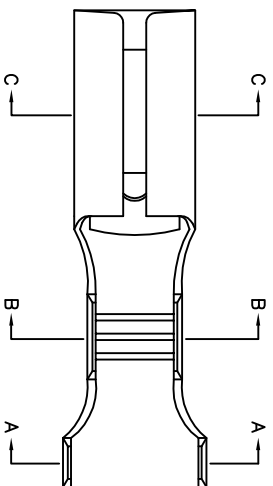


TERMINALS SPECIFICATION DRAWING



FOR REFERENCE ONLY

- 11) CRIMPING WIRE TENSILE FORCE IS BASE ON COPPER BREAK OFF INTENSITY.
- 10) TEMPERATURE RANGE -40°C TO +120°C.
- 9) VOLTAGE-MAX [VOLTS] PER WIRE SPECIFICATION.
- 8) (17) FOR REFERENCE ONLY.
- 7) MATCHING WITH TAB t0.5 X W2.8.
- 6) TENSILE FORCE : MIN 2.3KG.
- 5) INSERT FORCE : MAX 2.5KG.
- 4) THICKNESS PLATING MORE THAN 40µ INCH.
- 3) PACKING QTY : 10000 PCS/REEL.
- 2) WIRE INSULATION (O.D) : 2.5MM.
- 1) APPLICABLE WIRE RANGE : 0.80-0.36MM².

SPECIFICATION :

MATERIAL: t0.25 BRASS C2680		TIN PLATING NONE		17110BH-2
DIMENSIONS : MM		DWN:KS YEW		PART NUMBER 17110BH-1
TOLERANCE UNLESS OTHERWISE SPECIFIED: X.XXX +/-0.05 X.XX +/-0.10 X.X +/-0.20 X +/-0.50		TREATMENT SELECTIVE		
REVISION: 01		CHK: SC CHOO APVD: CHUANG		PART NAME: 110 SERIES FEMALE TERMINALS APPLICABLE (1) TERMINALS (2) HOUSING (1) TAB t0.5 X W2.8 (2) -
SHEET OF : 1 / 1		SCALE : FREE		
EFFECTIVE DATE : 23/8/07		DRAWING NO: A1269		
Terminals & Connectors Elamp Precision Industry(M) Sdn.Bhd.				