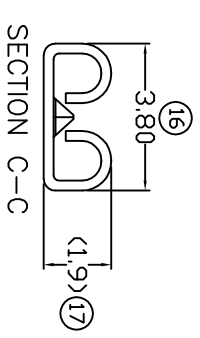
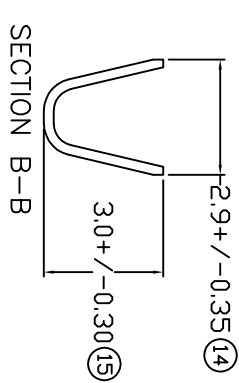
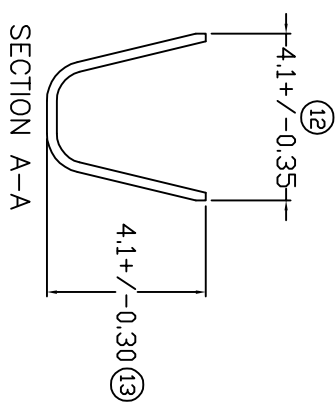
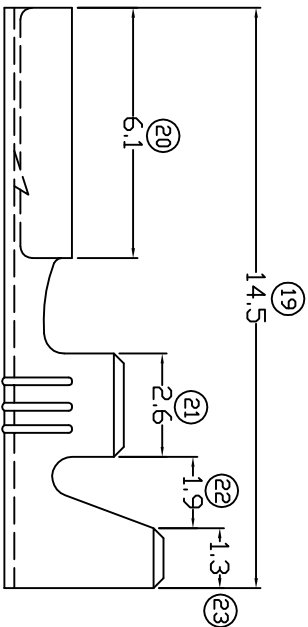
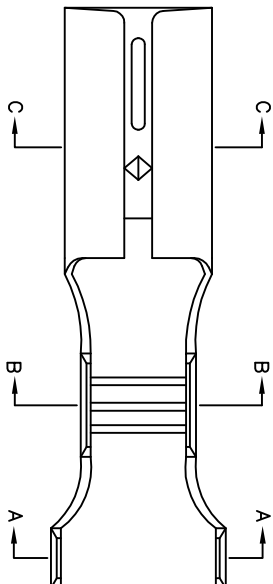
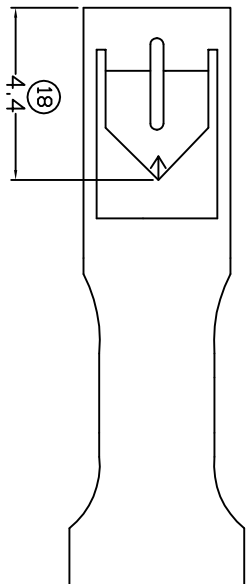


# TERMINALS SPECIFICATION DRAWING



## FOR REFERENCE ONLY

- 11) CRIMPING WIRE TENSILE FORCE IS BASE ON COPPER BREAK OFF INTENSITY.
- 10) TEMPERATURE RANGE -40°C TO +120°C.
- 9) VOLTAGE-MAX [VOLTS] PER WIRE SPECIFICATION.
- 8) **(17)** FOR REFERENCE ONLY.
- 7) MATCHING WITH TAB t0.8 X W2.8.
- 6) TENSILE FORCE : MIN 4.0KG.
- 5) INSERT FORCE : MAX 3.6KG.
- 4) THICKNESS PLATING MORE THAN 40µ INCH.
- 3) PACKING QTY : 10000 PCS/REEL.
- 2) WIRE INSULATION (O.D) : 2.5MM.
- 1) APPLICABLE WIRE RANGE : 0.77-0.34MM².

SPECIFICATION :

<b>REVISION:</b> 02	<b>MATERIAL:</b> t0.25 BRASS C2680	<b>TIN PLATING</b>			
<b>REVISION:</b> 02	<b>DIMENSIONS :</b> MM	<b>TREATMENT SELECTIVE</b>	<b>PART NUMBER</b>		
<b>REVISION:</b> 02	<b>TOLERANCE UNLESS OTHERWISE SPECIFIED:</b> X.XXX +/-0.05 X.XX +/-0.10 X.X +/-0.20 X +/-0.50	<b>DWN:</b> KS YE'W	<b>CHK:</b> HY LIM	<b>APVD:</b> CHUANG	<b>PART NAME:</b> 110 SERIES FEMALE TERMINALS
<b>REVISION:</b> 02	<b>EFFECTIVE DATE :</b> 24/9/07	<b>DRAWING NO:</b> A1376	<b>SCALE :</b> FREE	<b>APPLICABLE (1) TERMINALS (2) HOUSING</b>	<b>APPLICABLE (1) TERMINALS (2) HOUSING</b>
<b>REVISION:</b> 02	<b>SHEET OF :</b> 1 / 1				
					<b>EPJ</b> Terminals & Connectors Elamp Precision Industry(M) Sdn.Bhd.