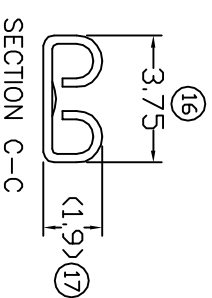
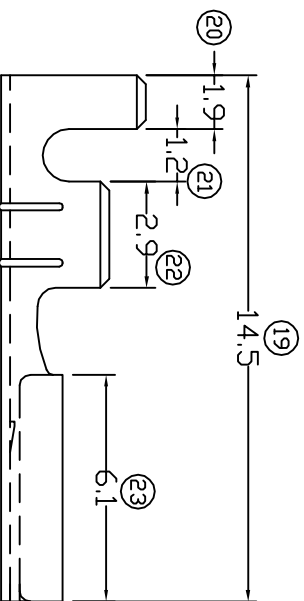
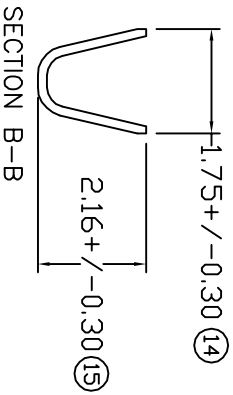
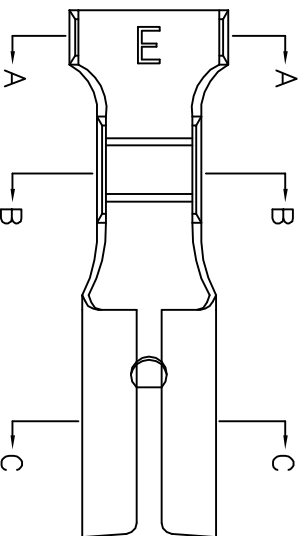
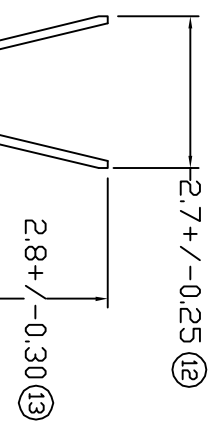
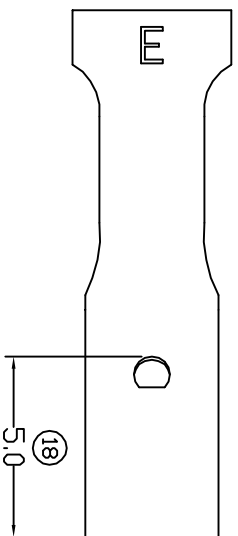


# TERMINALS SPECIFICATION DRAWING



- 11) CRIMPING WIRE TENSILE FORCE IS BASE ON COPPER BREAK OFF INTENSITY.
- 10) TEMPERATURE RANGE -40°C TO +120°C.
- 9) VOLTAGE-MAX [VOLTS] PER WIRE SPECIFICATION.
- 8) (17) FOR REFERENCE ONLY.
- 7) MATCHING WITH TAB t0.8 X W2.8.
- 6) TENSILE FORCE : MIN 2.45KG.
- 5) INSERT FORCE : MAX 3.30KG.
- 4) THICKNESS PLATING MORE THAN 40μ INCH.
- 3) PACKING QTY : 15000 PCS/REEL.
- 2) WIRE INSULATION (O.D) : 1.6MM.
- 1) APPLICABLE WIRE RANGE : 0.37-0.16MM².

**FOR REFERENCE ONLY**

SPECIFICATION :

REVISION:

02



SHEET OF :

1 / 1

MATERIAL:	C2680	TIN PLATING	17110S(0.8)-2
to.25 BRASS		NONE	17110S(0.8)-1
DIMENSIONS : MM		TREATMENT SELECTIVE	PART NUMBER
TOLERANCE UNLESS OTHERWISE SPECIFIED:		DWN: KS YEW	
X.XXX +/-0.05		CHK: C.Y	
X.XX +/-0.10		CHK: CHUANG	
X.X +/-0.20		APVD: Y.L	
X +/-0.50		APVD: CHUANG	
EFFECTIVE DATE :	22/1/09	SCALE : FREE	
		DRAWING NO:	A1252-2
			(2) -

**EPI** Terminals & Connectors  
Elamp Precision Industry(M) Sdn.Bhd.

PART NAME:  
110 SERIES FEMALE TERMINALS

APPLICABLE (1) TERMINALS (2) HOUSING  
(1) TAB t0.8 X W2.8

REV.	DATE	AMENDMENT	5) INSERT FORCE: MAX 3.6KG CHANGE TO MAX 3.30KG, 6) TENSILE FORCE: MIN 3.2KG CHANGE TO MIN 2.45KG.
------	------	-----------	-------------------------------------------------------------------------------------------------------